



22 The Willows  
Little Harrowden, NN9 5BJ



**Simpson & Partners**





This superb extended four bedroom semi-detached property is perfectly positioned in the popular village of Little Harrowden, offering the ideal blend of comfort and practical living. The home features convenient off road parking and a garage, while benefiting from UPVC double glazing and gas radiator heating.

Upon entering through the entrance porch, you'll discover a 15' lounge that flows seamlessly into an open plan dining area. This bright and airy space is enhanced by French doors that open directly onto the rear garden, creating a wonderful indoor outdoor living experience. The open plan design continues into the modern fitted kitchen, creating a perfect space for both everyday family life and entertaining guests.

A practical utility room on the ground floor provides an extension of the kitchen with additional storage units. Ascending to the first floor reveals four bedrooms, with the primary bedroom featuring a pristine white ensuite shower room. The family bathroom impresses with its luxurious four-piece suite, including a separate shower cubicle for added convenience.

An internal viewing is highly recommended to fully appreciate all this exceptional property has to offer and avoid any disappointment. This home truly must be seen to be appreciated.

Council Tax Band B - Energy Rating C/73.

 4  2  3

Offers In Excess Of £295,000







Superb Extended Family Home.....



Simpson & Partners



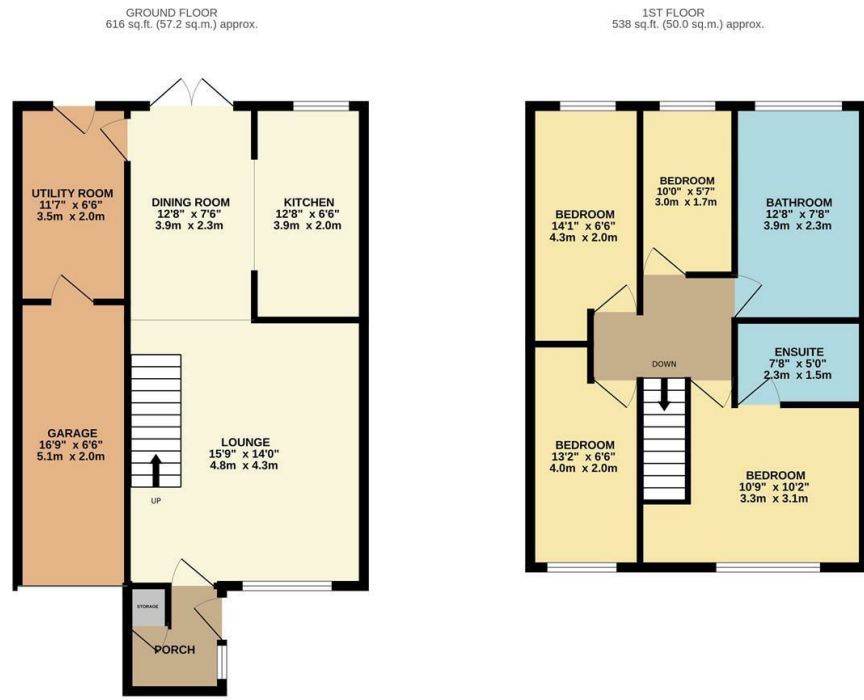


Rear Garden





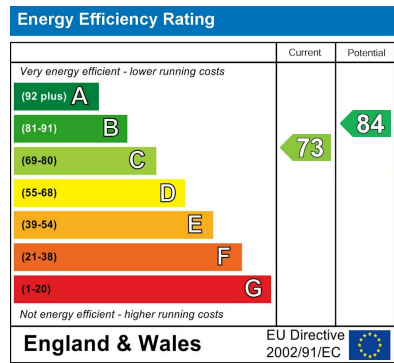




TOTAL FLOOR AREA: 1154 sq.ft. (107.2 sq.m.) approx.

Whilst every attempt has been made to ensure the accuracy of the floorplan contained here, measurements of doors, windows, rooms and any other items are approximate and no responsibility is taken for any error, omission or mis-statement. This plan is for illustrative purposes only and should be used as such by any prospective purchaser. The services, systems and appliances shown have not been tested and no guarantee as to their operability or efficiency can be given.

Made with Metroplan ©2025





When you buy with Simpson and Partners, you know **you'll be in safe hands**. From the moment you walk through our doors, we'll make you **feel truly welcome**. Our sales consultants and financial advisors will take you through **every step of the process**, offering **free expert advice** along the way, from help choosing the right mortgage and insurance through to finding your conveyancer. And if you need help selling your home too, **with over 20 years of local experience, you can trust us to get you moving**.



**Simpson  
& Partners**

Making Every  
Journey Personal



01536 518200

[kettering@simpsonandpartners.co.uk](mailto:kettering@simpsonandpartners.co.uk)

<https://www.simpsonandpartners.co.uk/>

1 Silver Street, Kettering, Northants, NN16 0BN