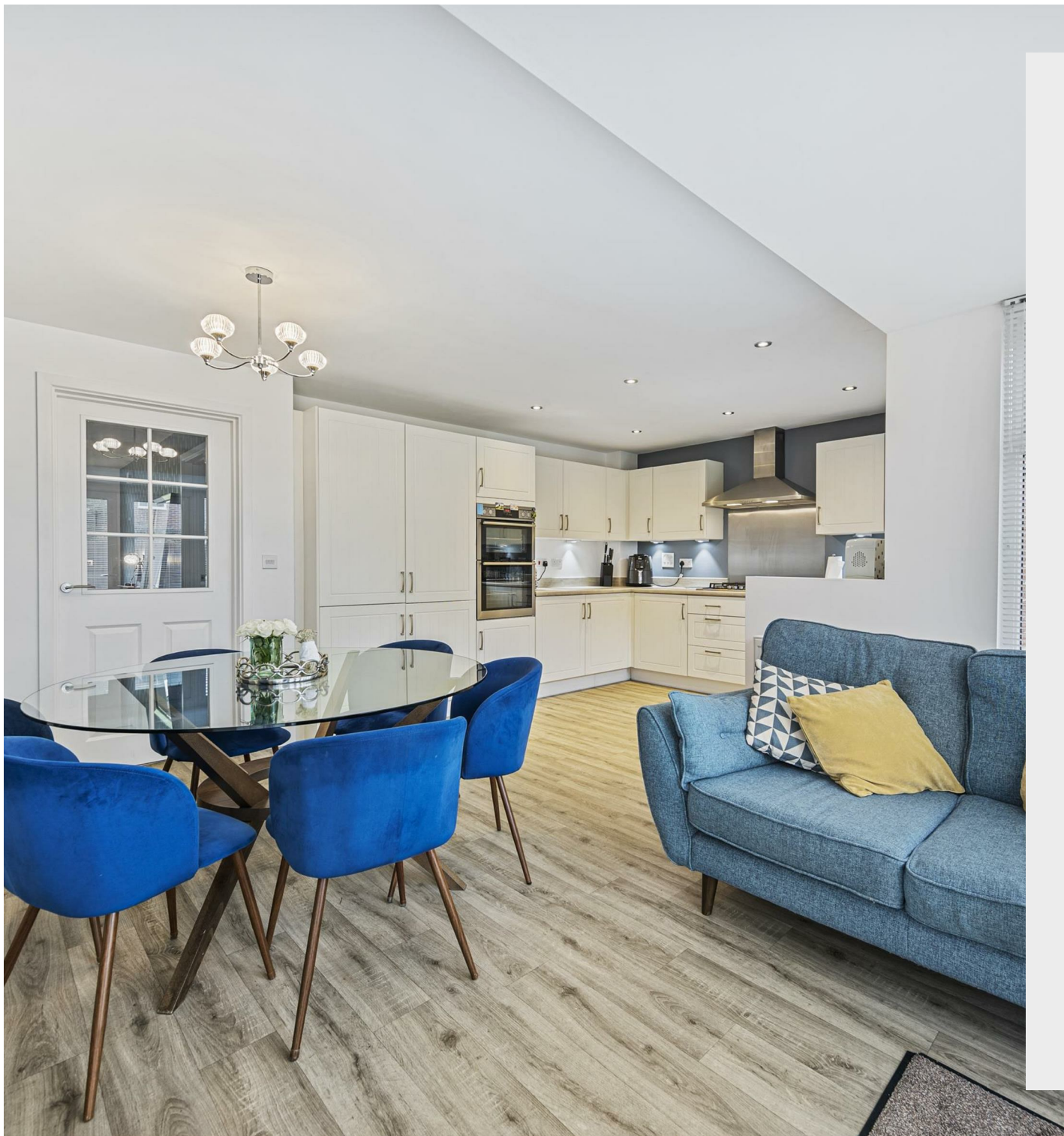




8 Delapre Lane
Barton Seagrave, NN15 5GW



Simpson & Partners



Located at the front of the sought after Bertone Manor development, just off Warkton Lane, this stunning four bedroom detached David Wilson family home offers modern living at its finest. This beautifully presented property boasts an array of desirable features, including UPVC double glazing and gas radiator central heating throughout.

The heart of the home is undoubtedly the spacious 20' kitchen/breakfast room, complete with built-in and integrated appliances, perfect for family gatherings and entertaining. The 19' bay fronted living room provides a warm and inviting space for relaxation. For those who work from home or need a quiet space, the study offers the ideal solution.

Upstairs, the master bedroom is a true retreat, featuring built-in wardrobes and a private en-suite shower room. Three additional bedrooms and a family bathroom complete the first floor, ensuring ample space for the entire family.

The property's appeal extends outdoors with both front and enclosed rear gardens, offering a perfect balance of curb appeal and private outdoor living. Practical features include off-road parking and a single garage, addressing all your vehicular needs.

Additional highlights include a convenient downstairs WC, a separate utility room, and a welcoming entrance hall. The thoughtful layout and high-quality finish throughout make this house a true home.

To fully appreciate the superb craftsmanship and family friendly design of this property, an internal viewing is highly recommended. Don't miss the opportunity to make this exceptional David Wilson home yours in the desirable Bertone Manor development.



4



2



2

Price £460,000



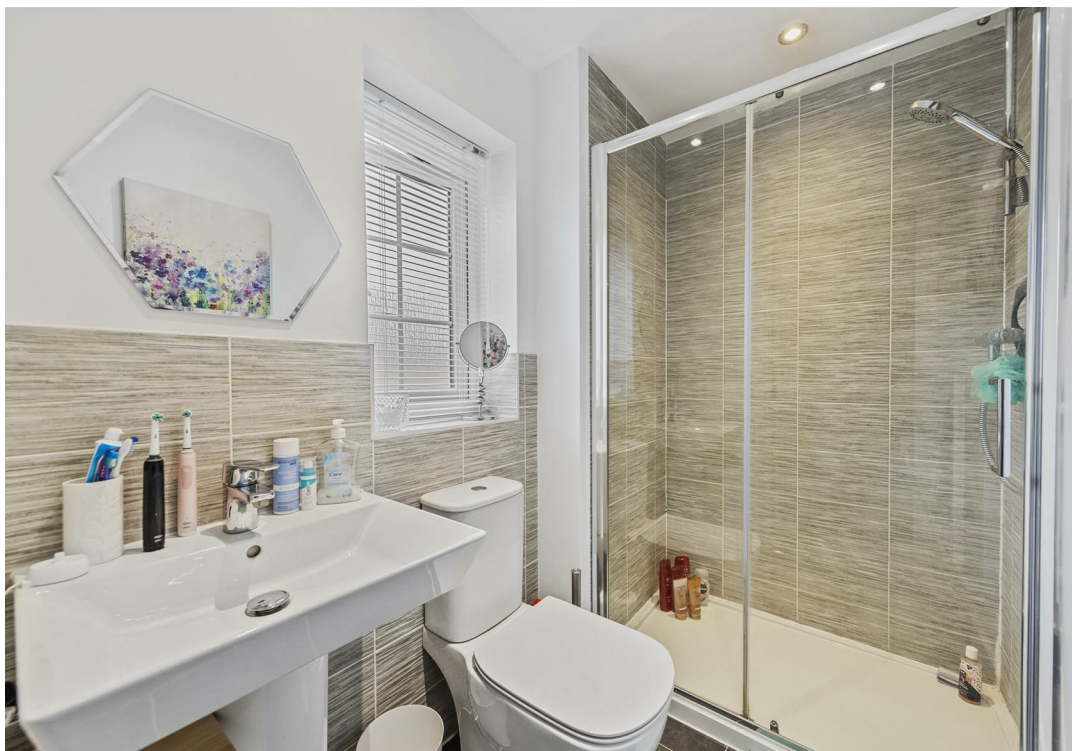
19' Living Room & Study

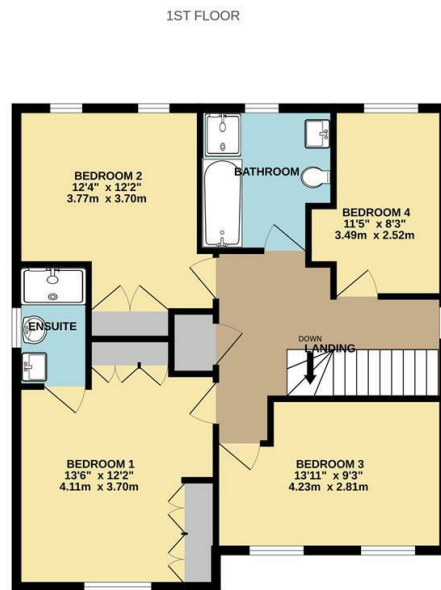
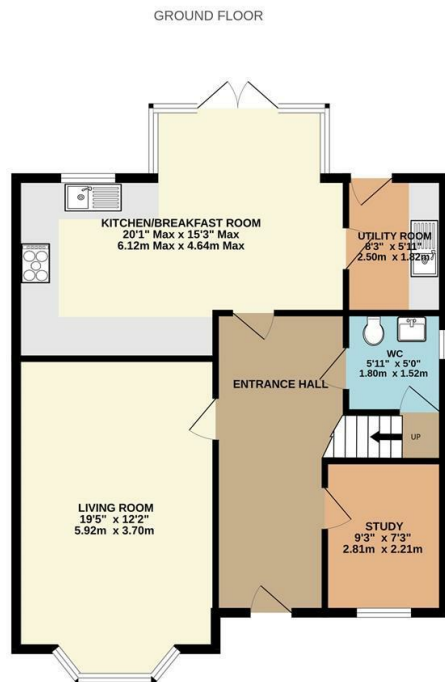


Simpson & Partners

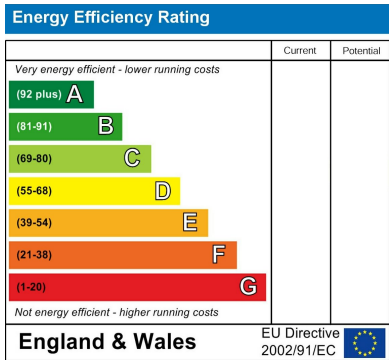


Enclosed Rear Garden





Whilst every attempt has been made to ensure the accuracy of the floor plan contained here, measurements of doors, windows, rooms and any other items are approximate and no responsibility is taken for any error, omission, or mis-statement. The plan is copyright to Simpson and Partners and is for illustrative purposes and should only be used as such by any prospective purchaser. The services, systems and appliances shown have not been tested and no guarantee as to their operability can be given.
Made with Metropix 6/2024



When you buy with Simpson and Partners, you know **you'll be in safe hands**. From the moment you walk through our doors, we'll make you **feel truly welcome**. Our sales consultants and financial advisors will take you through **every step of the process**, offering **free expert advice** along the way, from help choosing the right mortgage and insurance through to finding your conveyancer. And if you need help selling your home too, **with over 20 years of local experience, you can trust us to get you moving**.



**Simpson
& Partners**

Making Every
Journey Personal



01536 518200

kettering@simpsonandpartners.co.uk

<https://www.simpsonandpartners.co.uk/>

1 Silver Street, Kettering, Northants, NN16 0BN