



19a Friston Close

Barton Seagrave, Northants NN15 6FB



Simpson & Partners

50% Shared Ownership - This superb double fronted property is ideally situated in the sought after village of Barton Seagrave. Boasting three bedrooms, this home offers a perfect blend of comfort and convenience.

The ground floor features a 16' living room with patio doors leading to the rear garden, allowing natural light to flood the space. The heart of the home is the impressive 16' kitchen/dining room, complete with built-in appliances, perfect for family gatherings and entertaining. A utility room and downstairs WC add to the practicality of the layout.

Upstairs, you'll find three well proportioned bedrooms. Bedroom one is a true retreat, featuring fitted wardrobes and an en-suite shower room. A three-piece family bathroom serves the other bedrooms, ensuring ample facilities for the whole family.

The property benefits from modern amenities, including UPVC double glazing and gas radiator heating, ensuring comfort in all seasons. Outside, the home offers a low-maintenance rear garden and the convenience of off-road parking accessible from the rear of the property.

Located in a popular village setting, this home combines charm with practicality. To fully appreciate all this property has to offer, an internal viewing is highly recommended. Don't miss out on this fantastic opportunity – schedule your visit today to avoid disappointment!

Remaining 50% Share Rent is £ 418.61

50% Shared Ownership £130,000



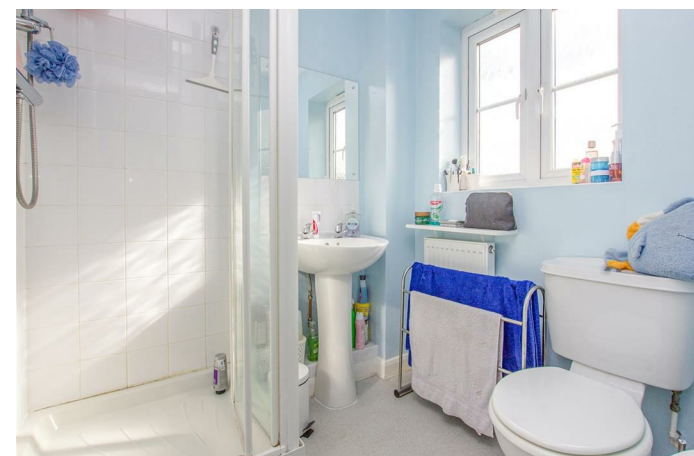
3



2



1



Simpson & Partners

GROUND FLOOR



1ST FLOOR



While every attempt has been made to ensure the accuracy of the floor plan contained here, measurements of doors, windows, rooms and any other items are approximate and no responsibility is taken for any error, omission, or mis-statement. The plan is copyright to Simpson and Partners and is for illustrative purposes and should only be used as such by any prospective purchaser. The services, systems and appliances shown have not been tested and no guarantee as to their operability can be given.
Made with Metreplan ©2004



Energy Efficiency Rating

	Current	Potential
Very energy efficient - lower running costs		
(92 plus) A		90
(81-91) B		
(69-80) C	73	
(55-68) D		
(39-54) E		
(21-38) F		
(1-20) G		
Not energy efficient - higher running costs		
England & Wales	EU Directive 2002/91/EC	



When you buy with Simpson and Partners, you know **you'll be in safe hands**. From the moment you walk through our doors, we'll make you **feel truly welcome**. Our sales consultants and financial advisors will take you through **every step of the process**, offering **free expert advice** along the way, from help choosing the right mortgage and insurance through to finding your conveyancer. And if you need help selling your home too, **with over 20 years of local experience, you can trust us to get you moving**.



**Simpson
& Partners**

Making Every
Journey Personal



01536 518200

kettering@simpsonandpartners.co.uk

<https://www.simpsonandpartners.co.uk/>

1 Silver Street, Kettering, Northants, NN16 0BN