



23 St. Saviours Road  
Kettering, NN15 5EL



**Simpson & Partners**



This attractive three bedroom semi-detached property is now available for purchase with no onward chain, making it an ideal opportunity for those looking to move quickly. Situated on the highly sought after Ise Lodge development, this home offers both comfort and convenience.

The property boasts a generous plot, featuring off-road parking and a garage to the rear, perfect for those with vehicles. Inside, you'll find a well-appointed living space with UPVC double glazing and efficient gas radiator heating for year round comfort.

The heart of the home is the modern white fitted kitchen, complete with stainless steel appliances. The living room is a cozy retreat, enhanced by a charming feature fireplace. For formal dining, there's a separate dining room, ideal for family gatherings or entertaining guests.

Upstairs, you'll find three comfortable bedrooms and a three-piece bathroom suite. The property's appeal extends to the outdoors, with both a front garden and a good sized rear garden, offering space for relaxation and outdoor activities.

This well-presented family home is a must see, and an internal viewing is highly recommended to fully appreciate its many features. Don't miss this opportunity to own a property in this popular location!

Council Tax Band B - Energy Rating C/72

Price £260,000



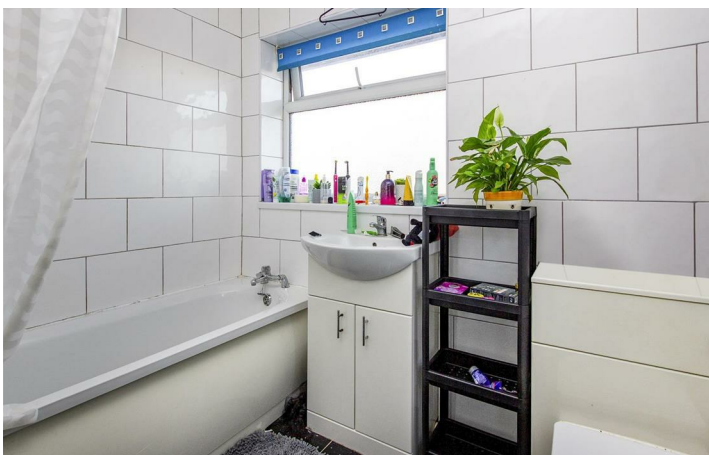
3



1

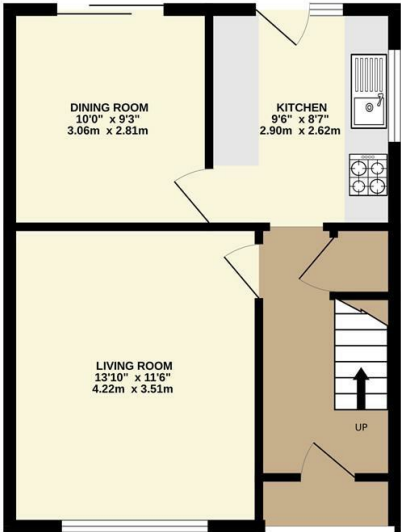


2

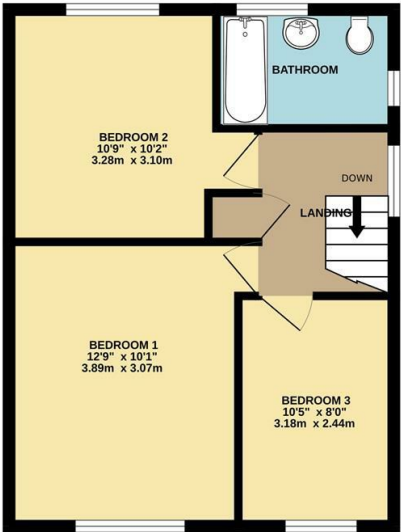


Simpson & Partners

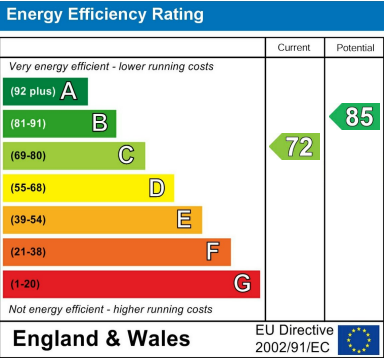
GROUND FLOOR  
426 sq.ft. (39.5 sq.m.) approx.



1ST FLOOR  
426 sq.ft. (39.5 sq.m.) approx.



TOTAL FLOOR AREA: 851 sq.ft. (79.1 sq.m.) approx.  
Whilst every attempt has been made to ensure the accuracy of the floor plan contained here, measurements of doors, windows, rooms and any other items are approximate and no responsibility is taken for any error, omission, or mis-statement. The plan is copyright to Simpson and Partners and is for illustrative purposes and should only be used as such by any prospective purchaser. The services, systems and appliances shown have not been tested and no guarantee as to their operability can be given.  
Made with Metropix ©2025





When you buy with Simpson and Partners, you know **you'll be in safe hands**. From the moment you walk through our doors, we'll make you **feel truly welcome**. Our sales consultants and financial advisors will take you through **every step of the process**, offering **free expert advice** along the way, from help choosing the right mortgage and insurance through to finding your conveyancer. And if you need help selling your home too, **with over 20 years of local experience, you can trust us to get you moving**.



**Simpson  
& Partners**

Making Every  
Journey Personal



01536 518200

[kettering@simpsonandpartners.co.uk](mailto:kettering@simpsonandpartners.co.uk)

<https://www.simpsonandpartners.co.uk/>

1 Silver Street, Kettering, Northants, NN16 0BN