



2 Valentine Lane

Desborough, Northants NN14 2FQ



Simpson & Partners

Nestled in a sought-after non-estate location, this exclusive property stands as one of only four homes constructed in the year 2022, offering a refreshing escape from cookie-cutter developments. This larger-than-average, three-bedroom semi-detached home boasts an array of desirable features, starting with the convenience of off-road parking for two vehicles.

Upon entering, the property welcomes you with a spacious 17' living room that sets the stage for comfortable relaxation and gracious hosting. The heart of the home is undoubtedly the impressive 14' kitchen/dining room, a culinary haven equipped with built-in and integrated appliances that any home chef would cherish. The lustrous French doors invite natural light to flood the space and beckon you out to the elegantly landscaped garden, where leisure and entertainment can seamlessly extend.

The sleeping quarters include a generous 14' bedroom, offering a personal retreat for rest and rejuvenation. The accommodation is further complemented by a luxury fitted three-piece bathroom that serves as a private spa, promising a serene space to unwind.

This property is a perfect blend of sophistication and comfort, with thoughtful touches that elevate day-to-day living. It represents a rare opportunity to acquire a modern home with space, style, and the added allure of being one of a select few in its vicinity.

Offers Over £270,000



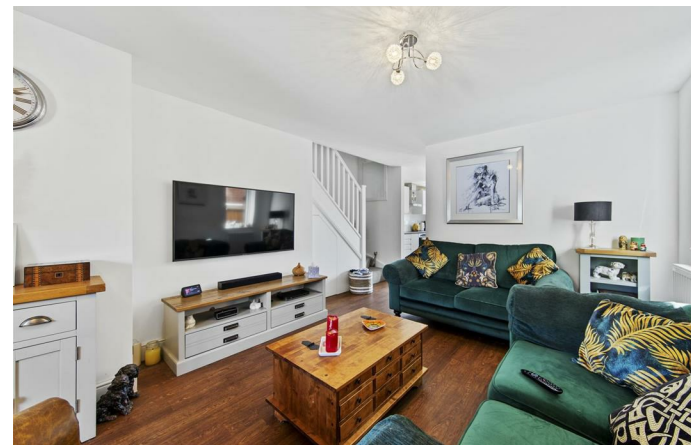
3

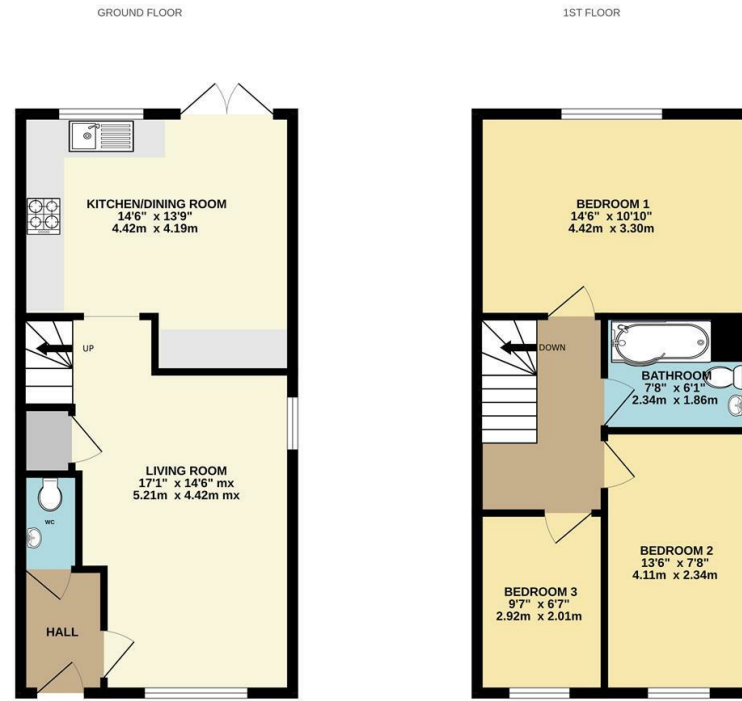


1

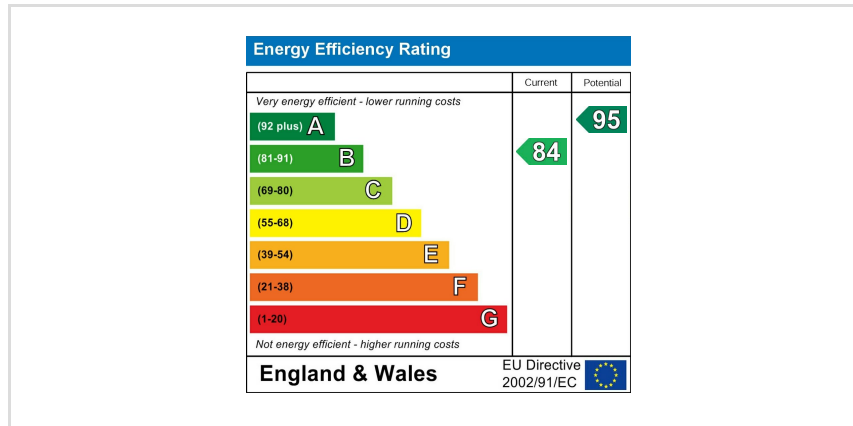


1





Whilst every attempt has been made to ensure the accuracy of the floor plan contained here, measurements of doors, windows, stairs and any other items are approximate and no responsibility is taken for any error, omission, or mis-statement. The plan is copyright to Simpson and Partners and is for illustrative purposes and should only be used as such for any prospective purchaser. The services, systems and appliances shown have not been tested and no guarantee as to their operability can be given. Made with Metropac ©2024.



When you buy with Simpson and Partners, you know **you'll be in safe hands**. From the moment you walk through our doors, we'll make you **feel truly welcome**. Our sales consultants and financial advisors will take you through **every step of the process**, offering **free expert advice** along the way, from help choosing the right mortgage and insurance through to finding your conveyancer. And if you need help selling your home too, **with over 20 years of local experience, you can trust us to get you moving**.



**Simpson
& Partners**

Making Every
Journey Personal



01536 518200

kettering@simpsonandpartners.co.uk

<https://www.simpsonandpartners.co.uk/>

1 Silver Street, Kettering, Northants, NN16 0BN