



2 Higham Road

Burton Latimer, Northamptonshire NN15 5PU



Simpson & Partners



Located in the heart of Burton Latimer is this fantastically extended four bedroom detached bungalow, within convenient distance of local road links, shops, great schools and other amenities. The property has been extended heavily meaning you will find a large kitchen/ diner with plenty of storage, large living room, study area, wet room, refitted family bathroom, four great size bedrooms and a garage. Externally you will find a large garden and spacious frontage with parking for several cars.

Call us today to arrange a viewing!

 4

 2

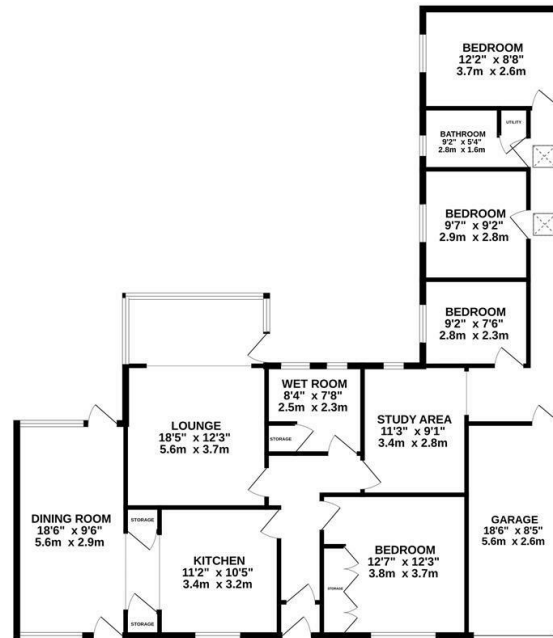
 2

Price £425,000





GROUND FLOOR
1524 sq.ft. (141.6 sq.m.) approx.



TOTAL FLOOR AREA: 1524 sq ft (141.6 sq m.) approx.
Whilst every attempt has been made to ensure the accuracy of the floorplan contained here, measurements of doors, windows, rooms and any other items are approximate and no responsibility is taken for any omission or mis-statement. This plan is for illustrative purposes only and should be used as such for any prospective purchase. The services, systems and appliances shown have not been tested and no guarantee as to their operability or efficiency can be given.
 Made with Metropac ©2024



Energy Efficiency Rating

| | Current | Potential |
|--|----------------------------|-----------|
| <i>Very energy efficient - lower running costs</i> | | |
| (92 plus) A | | |
| (81-91) B | | |
| (69-80) C | | |
| (55-68) D | | |
| (39-54) E | | |
| (21-38) F | | |
| (1-20) G | | |
| <i>Not energy efficient - higher running costs</i> | | |
| England & Wales | EU Directive 2002/91/EC | |



When you buy with Simpson and Partners, you know **you'll be in safe hands**. From the moment you walk through our doors, we'll make you **feel truly welcome**. Our sales consultants and financial advisors will take you through **every step of the process**, offering **free expert advice** along the way, from help choosing the right mortgage and insurance through to finding your conveyancer. And if you need help selling your home too, **with over 20 years of local experience, you can trust us to get you moving**.



**Simpson
& Partners**

Making Every
Journey Personal



01536 518200

kettering@simpsonandpartners.co.uk

<https://www.simpsonandpartners.co.uk/>

1 Silver Street, Kettering, Northants, NN16 0BN