

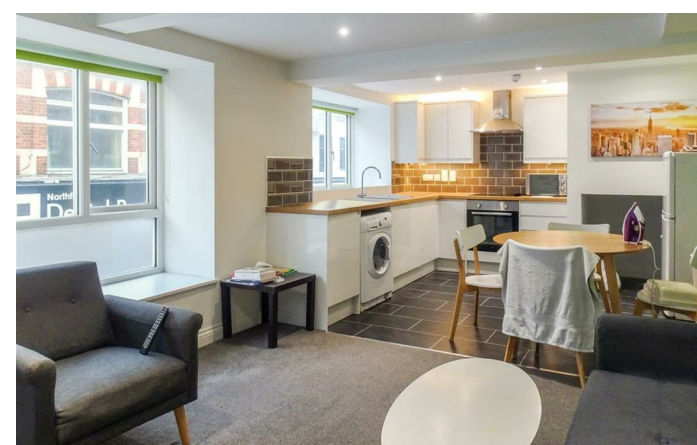
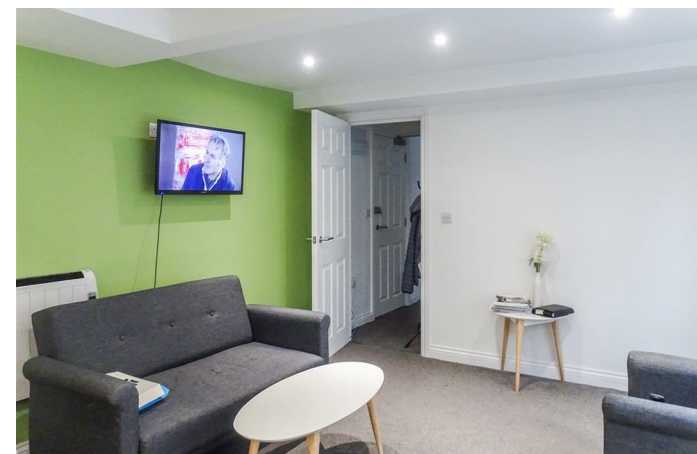


6-10 Montagu House Montagu Street
Kettering, Northamptonshire NN16 8RU

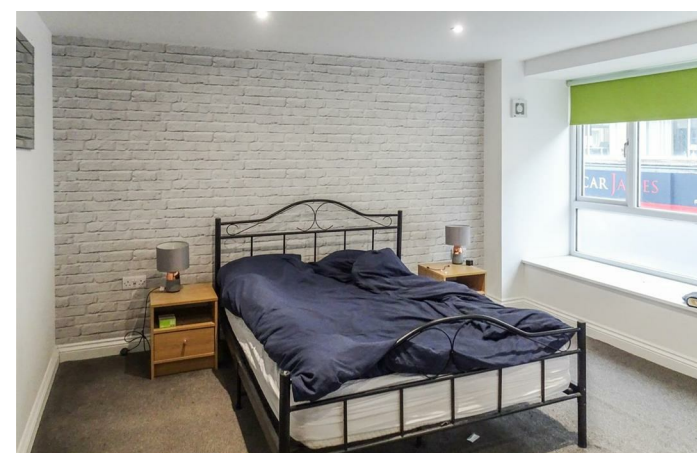
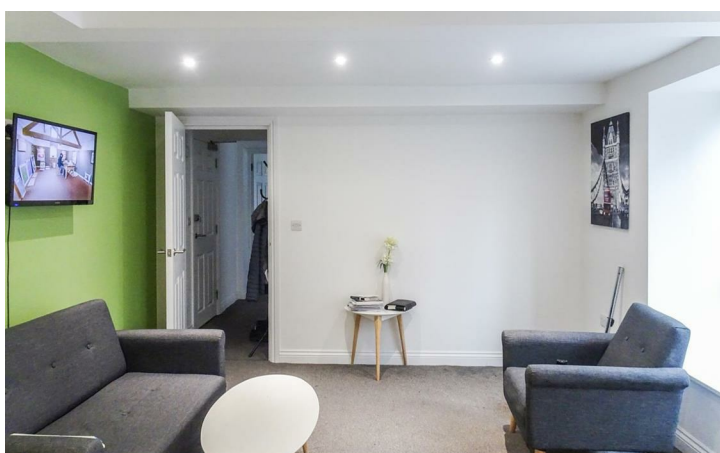


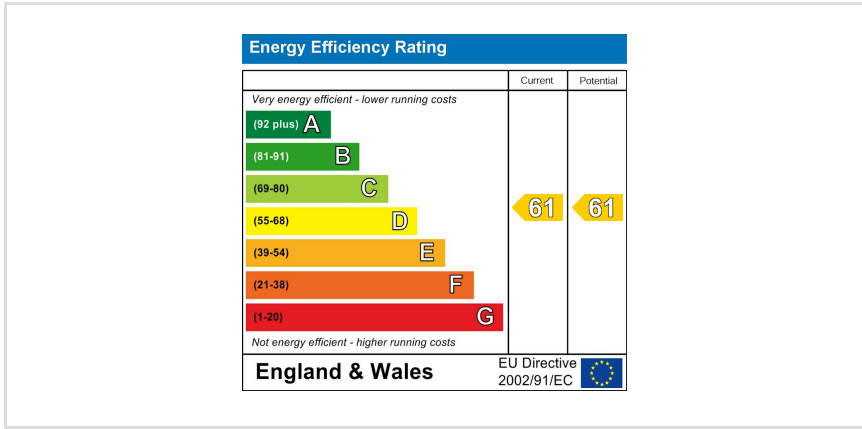
Simpson & Partners

Simpson and Partners are pleased to offer to the rental market this super FULLY FURNISHED one bedroom apartment ideally situated in the heart of Kettering town centre. All furniture photographed supplied. The stylish accommodation comprises entrance hall, large open plan kitchen / diner with all appliances supplied. Super sized double bedroom and shower room. There is also communal outside space. Fully furnished. Available July. EPC D.
Please note pets are not accepted.



£675





When you buy with Simpson and Partners, you know **you'll be in safe hands**. From the moment you walk through our doors, we'll make you **feel truly welcome**. Our sales consultants and financial advisors will take you through **every step of the process**, offering **free expert advice** along the way, from help choosing the right mortgage and insurance through to finding your conveyancer. And if you need help selling your home too, **with over 20 years of local experience, you can trust us to get you moving**.



**Simpson
& Partners**

Making Every
Journey Personal



01536 518200

kettering@simpsonandpartners.co.uk

<https://www.simpsonandpartners.co.uk/>

1 Silver Street, Kettering, Northants, NN16 0BN