



9 Saxon Close  
Mawsley, NN14 1UG



**Simpson & Partners**

Discover your dream home in the sought after village of Mawsley with this exceptional three bedroom property. Perfectly situated with off-road parking and a spacious 17' garage, this home offers a blend of comfort and convenience.

Enjoy the modern comforts of double glazing, gas radiator central heating, and a luxurious fitted kitchen complete with built-in and integrated appliances. The open-plan living/dining room features French doors that lead to a private rear garden, creating a perfect space for relaxation and entertaining.

The property boasts a main bedroom with an en-suite shower room, a generous 17' second bedroom, and a stylish three-piece bathroom suite. With no rear overlooking neighbors, you can enjoy privacy and tranquility in your own oasis.

Don't miss the opportunity to make this stunning property your own. Contact us now to schedule your viewing and experience the charm and elegance of this home firsthand.

Price £285,000



3



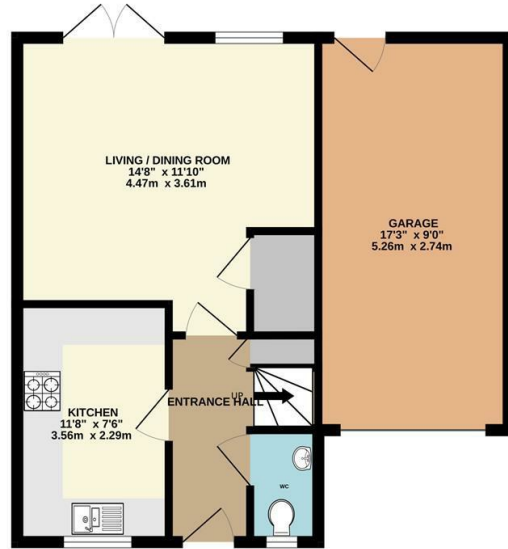
2



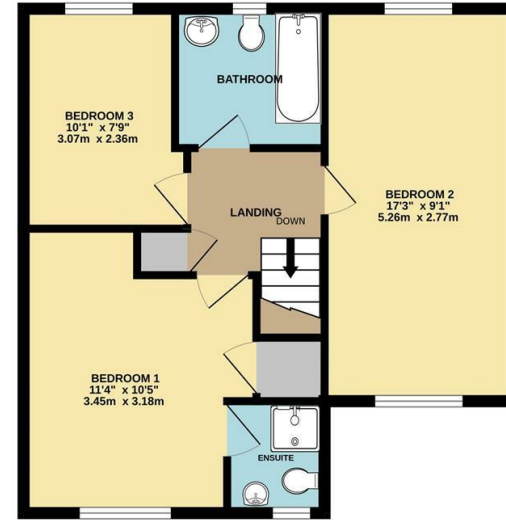
1



GROUND FLOOR



1ST FLOOR



Whilst every attempt has been made to ensure the accuracy of the floor plan contained here, measurements of doors, windows, rooms and any other items are approximate and no responsibility is taken for any error, omission, or mis-statement. The plan is copyright to Simpson and Partners and is for illustrative purposes and should only be used as such by any prospective purchaser. The services, systems and appliances shown have not been tested and no guarantee as to their operability can be given.  
Made with Metropix ©2024



Energy Efficiency Rating		
	Current	Potential
Very energy efficient - lower running costs		
(92 plus) <b>A</b>		
(81-91) <b>B</b>		
(69-80) <b>C</b>		
(55-68) <b>D</b>		
(39-54) <b>E</b>		
(21-38) <b>F</b>		
(1-20) <b>G</b>		
Not energy efficient - higher running costs		
<b>England &amp; Wales</b>	EU Directive 2002/91/EC	



When you buy with Simpson and Partners, you know **you'll be in safe hands**. From the moment you walk through our doors, we'll make you **feel truly welcome**. Our sales consultants and financial advisors will take you through **every step of the process**, offering **free expert advice** along the way, from help choosing the right mortgage and insurance through to finding your conveyancer. And if you need help selling your home too, **with over 20 years of local experience, you can trust us to get you moving**.



**Simpson  
& Partners**

Making Every  
Journey Personal



01536 518200

[kettering@simpsonandpartners.co.uk](mailto:kettering@simpsonandpartners.co.uk)

<https://www.simpsonandpartners.co.uk/>

1 Silver Street, Kettering, Northants, NN16 0BN