



11 Orlingbury Road
Wellingborough, NN9 5BH



Simpson & Partners



*** NO CHAIN !! ***

Welcome to this charming semi-detached house on Orlingbury Road in the delightful village of Little Harrowden. This property boasts two double bedrooms and one single bedroom, perfect for a growing family or those in need of a home office space.

One of the standout features of this property is the ample parking space available, with room for up to four vehicles, making hosting guests or having multiple cars a breeze. Additionally, the off-road parking ensures convenience and peace of mind for you and your visitors.

The large private garden is a green oasis waiting to be transformed into your own personal sanctuary. Whether you have a green thumb or simply enjoy outdoor relaxation, this garden offers endless possibilities for gardening, entertaining, or simply unwinding after a long day. There is also a large workshop with heating, insulation, windows, and power making it suitable for home office/gym/studio/workshop/games room/playroom, and a large garden shed..

While the property is in need of modernisation, this presents an exciting opportunity for you to put your own stamp on the house and create a space that truly reflects your style and preferences. The outhouse storage has a toilet and full plumbing including a Belfast sink, currently providing additional space for storing tools, bikes, or any other items, helping you keep the main house clutter-free, ideal for converting into a utility room..

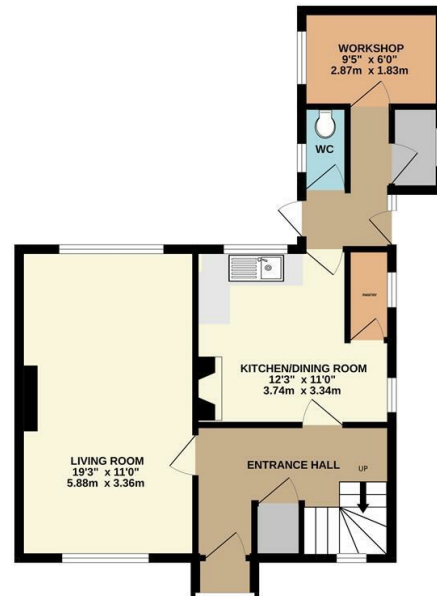
 3  1  null

Offers In Excess Of £299,000

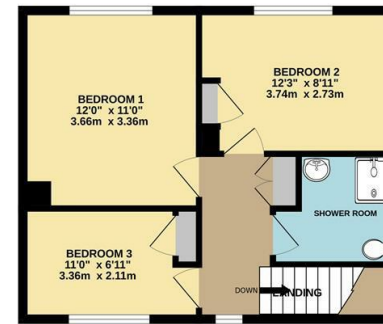




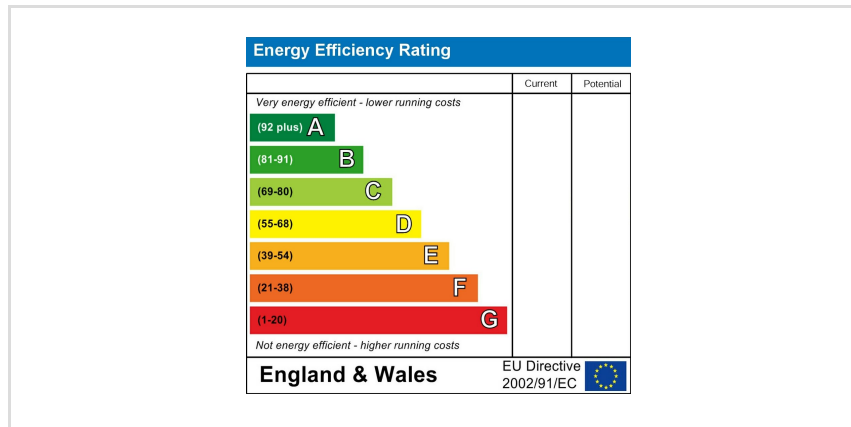
GROUND FLOOR
565 sq.ft. (52.5 sq.m.) approx.



1ST FLOOR
445 sq.ft. (41.4 sq.m.) approx.



TOTAL FLOOR AREA - 1011 sq.ft. (93.9 sq.m.) approx.
Whilst every attempt has been made to ensure the accuracy of the floor plan contained here, measurements of doors, windows, rooms and any other items are approximate and no responsibility is taken for any error, omission, or mis-statement. The plan is copyright to Simpson and Partners and is for illustrative purposes and should only be used as such by any prospective purchaser. The services, systems and appliances shown have not been tested and no guarantee as to their operability can be given.
Made with Metropac ©2024



When you buy with Simpson and Partners, you know **you'll be in safe hands**. From the moment you walk through our doors, we'll make you **feel truly welcome**. Our sales consultants and financial advisors will take you through **every step of the process**, offering **free expert advice** along the way, from help choosing the right mortgage and insurance through to finding your conveyancer. And if you need help selling your home too, **with over 20 years of local experience, you can trust us to get you moving**.



**Simpson
& Partners**

Making Every
Journey Personal



01536 518200

kettering@simpsonandpartners.co.uk

<https://www.simpsonandpartners.co.uk/>

1 Silver Street, Kettering, Northants, NN16 0BN