



26 School Lane
Kettering, NN16 0DH



Simpson & Partners

*** NO CHAIN *** CASH BUYERS ONLY *** This Victorian terrace dates back to 1874 and is situated in Kettering's bustling town centre within easy walking distance to local shops and amenities with on street permit parking. The property is offered for sale with vacant possession and has lots of potential for modernisation and an insulated clean loft space with lighting.

The accommodation comprises; Lounge, Kitchen, Bathroom, Landing, Two Bedrooms and a further Room accessed via Bedroom two.

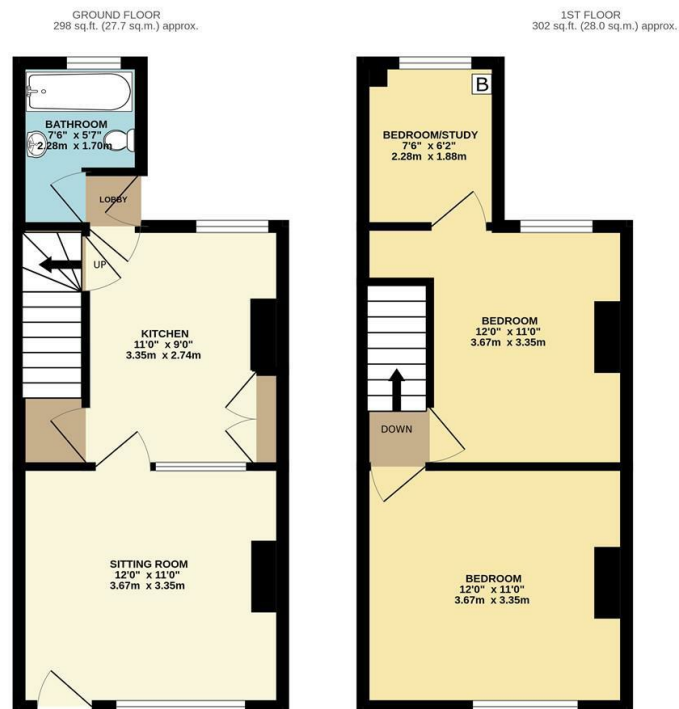
Viewing is via ourselves the sole selling agent and by appointment.



Asking Price £129,995

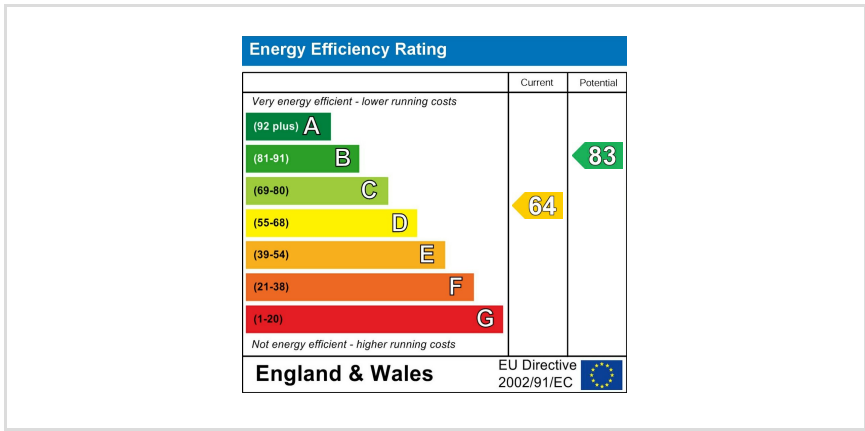


Simpson & Partners



TOTAL FLOOR AREA: 600 sq.ft. (55.8 sq.m.) approx.

Whilst every attempt has been made to ensure the accuracy of the floor plan contained here, measurements of doors, windows, rooms and any other items are approximate and no responsibility is taken for any error, omission, or mis-statement. The plan is copyright to Simpson and Partners and is for illustrative purposes and should only be used as such by any prospective purchaser. The services, systems and appliances shown have not been tested and no guarantee as to their operability can be given.
Made with Metropac ©2004.



When you buy with Simpson and Partners, you know **you'll be in safe hands**. From the moment you walk through our doors, we'll make you **feel truly welcome**. Our sales consultants and financial advisors will take you through **every step of the process**, offering **free expert advice** along the way, from help choosing the right mortgage and insurance through to finding your conveyancer. And if you need help selling your home too, **with over 20 years of local experience, you can trust us to get you moving**.



**Simpson
& Partners**

Making Every
Journey Personal



01536 518200

kettering@simpsonandpartners.co.uk

<https://www.simpsonandpartners.co.uk/>

1 Silver Street, Kettering, Northants, NN16 0BN