



22 Hollands Drive

Burton Latimer, Northamptonshire NN15 5YJ



**Simpson & Partners**



NO CHAIN - Nestled in a serene neighborhood, we are delighted to present this exquisite four bedroom detached property that epitomises modern living with a touch of elegance. A standout feature is the capacious DOUBLE GARAGE, accompanied by additional parking space to its side, ensuring ample room for vehicles and storage alike.

This home is a testament to contemporary design, boasting upvc double glazing throughout, ensuring a tranquil and energy-efficient environment. Complementing this is the gas radiator central heating system that promises a warm and inviting atmosphere, regardless of the season.

The heart of this home is the beautifully appointed fitted kitchen/breakfast room, complete with built-in appliances that cater to both the casual breakfast and the ambitious culinary project. It serves as a hub for both family life and entertaining.

Luxury extends to the sleeping quarters with the principal bedroom offering a private en-suite shower room, providing a secluded retreat for relaxation. Each bedroom features built-in wardrobes, marrying convenience with sophistication, and offering ample storage space.

The property's allure is further enhanced by the generous front garden which sets a welcoming tone, and the enclosed rear garden that offers a private oasis for outdoor living and entertainment.

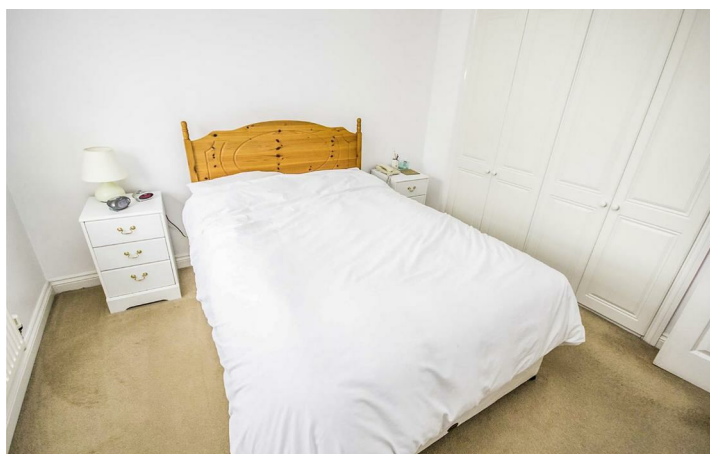
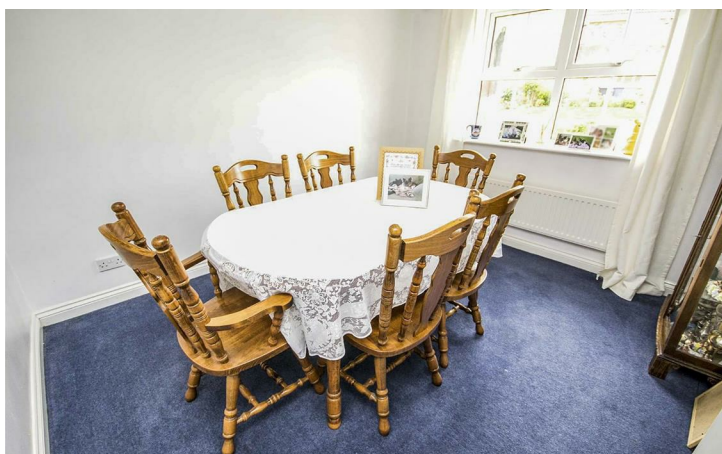
Inside, the accommodation unfolds with an inviting entrance hall that leads to a convenient downstairs WC, an elegant lounge perfect for unwinding, and a separate dining room that awaits family gatherings. The utility room adds a practical touch to this well-designed home.

Ascend to the first floor, where the refinement continues with four well-proportioned bedrooms, a tranquil en-suite shower room, and a family bathroom that serves the additional bedrooms.

To truly appreciate the unique character and finish of this home, an internal viewing is highly recommended. This is a home where memories are waiting to be made.

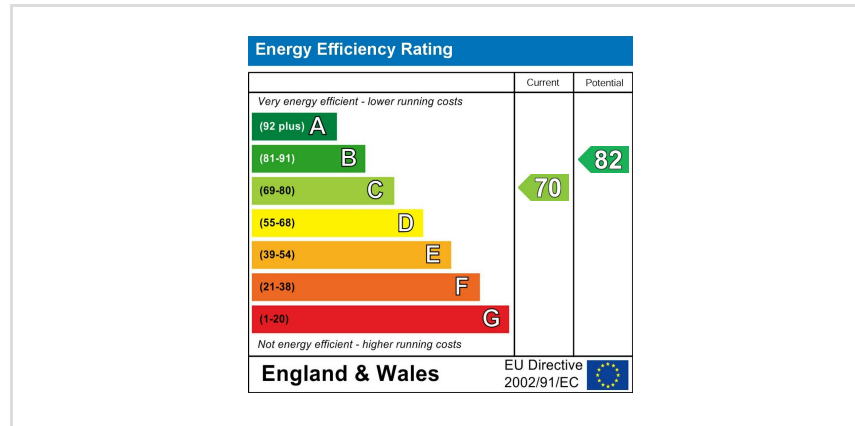
Price £400,000

 4  2  2





Whilst every attempt has been made to ensure the accuracy of the floor plan contained here, measurements of doors, windows, rooms and any other items are approximate and no responsibility is taken for any error, omission, or mis-statement. This plan is for illustrative purposes only and should be used as such by any prospective purchaser. The services, systems and appliances shown have not been tested and no guarantee as to their operability or efficiency can be given.  
 Made with Metropix ©2016





When you buy with Simpson and Partners, you know **you'll be in safe hands**. From the moment you walk through our doors, we'll make you **feel truly welcome**. Our sales consultants and financial advisors will take you through **every step of the process**, offering **free expert advice** along the way, from help choosing the right mortgage and insurance through to finding your conveyancer. And if you need help selling your home too, **with over 20 years of local experience, you can trust us to get you moving**.



**Simpson  
& Partners**

Making Every  
Journey Personal



01536 518200

[kettering@simpsonandpartners.co.uk](mailto:kettering@simpsonandpartners.co.uk)

<https://www.simpsonandpartners.co.uk/>

1 Silver Street, Kettering, Northants, NN16 0BN