



3 Brampton Close

Barton Seagrave, Northamptonshire NN15 6QQ



**Simpson & Partners**

Nestled in a tranquil neighborhood, we are delighted to present an exceptional opportunity to acquire a Springfir constructed three-bedroom detached bungalow, complete with a garage that exceeds the standard dimensions, providing ample space for vehicles and storage.

This exquisite home is designed with modern living in mind, featuring sealed unit double glazing throughout, ensuring a peaceful and energy-efficient environment. The residence is also equipped with gas radiator central heating to provide a consistently comfortable atmosphere regardless of the season.

Upon entering, one is greeted by a welcoming entrance hall that leads to the heart of the home: a generous 18' kitchen/dining room. This area is appointed with built-in appliances, offering convenience and sleek design, and provides the perfect space for culinary pursuits and entertaining guests.

Adjacent to the kitchen/dining room is the 15' sitting room, a serene retreat framed by tasteful décor and natural light, ideal for relaxation and social gatherings.

The sleeping quarters consist of three well-proportioned bedrooms, with the master bedroom being a sanctuary of comfort, featuring an en-suite wet room that adds a touch of luxury and privacy to the living experience.

Additionally, the home includes a three-piece family bathroom, well-designed to serve the household and guests with functionality and style.

The property is further enhanced by its outdoor spaces, boasting a neatly manicured front garden that enhances the home's curb appeal, and an enclosed rear garden providing a private and secure area for relaxation, recreation, and gardening.

This splendid bungalow is a true gem, and an internal viewing is highly recommended to fully appreciate the exceptional quality and comfort on offer. Don't miss the chance to make this your new home, where every detail has been taken care of for an effortless move-in and an enviable lifestyle.

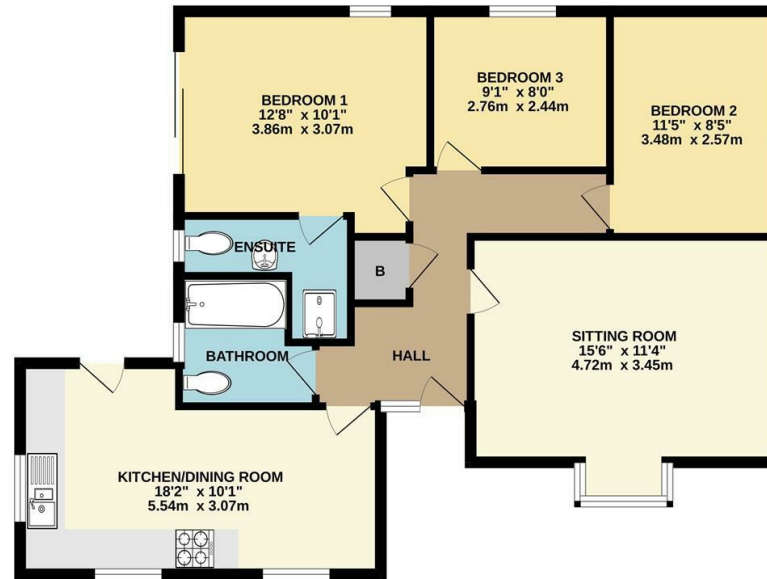


Price £365,000

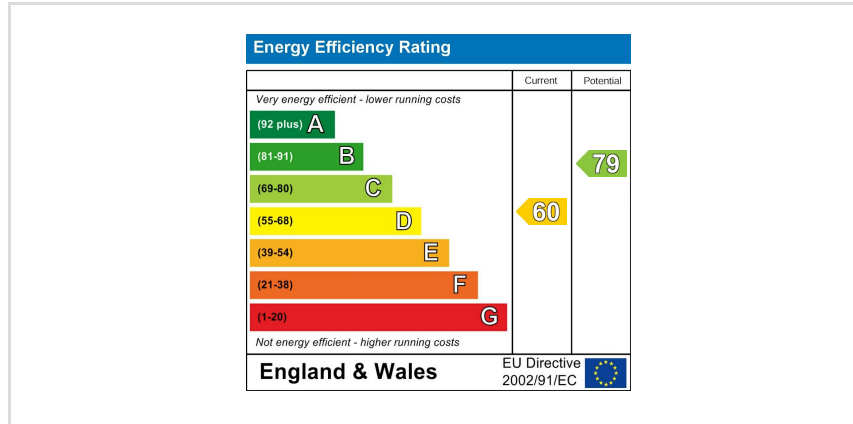
 3  2  2



GROUND FLOOR



Whilst every attempt has been made to ensure the accuracy of the floor plan contained here, measurements of doors, windows, rooms and any other items are approximate and no responsibility is taken for any error, omission, or mis-statement. The plan is copyright to Simpson and Partners and is for illustrative purposes and should only be used as such for any prospective purchaser. The services, systems and appliances shown have not been tested and no guarantee as to their operability can be given. Made with Metropac ©2024.



When you buy with Simpson and Partners, you know **you'll be in safe hands**. From the moment you walk through our doors, we'll make you **feel truly welcome**. Our sales consultants and financial advisors will take you through **every step of the process**, offering **free expert advice** along the way, from help choosing the right mortgage and insurance through to finding your conveyancer. And if you need help selling your home too, **with over 20 years of local experience, you can trust us to get you moving**.



**Simpson  
& Partners**

Making Every  
Journey Personal



01536 518200

[kettering@simpsonandpartners.co.uk](mailto:kettering@simpsonandpartners.co.uk)

<https://www.simpsonandpartners.co.uk/>

1 Silver Street, Kettering, Northants, NN16 0BN