



7, Cottesmore Avenue  
Kettering, NN15 6QU



**Simpson & Partners**



Welcome to this stunning four bedroom extended property nestled in the desirable village of Barton Seagrave. Boasting a perfect blend of space, comfort, and style, this home offers a modern lifestyle with a touch of elegance. This home offers a peaceful and family friendly environment, whilst still being within easy reach of local amenities, schools and transport links.

Upon entering, you are greeted by a bright hallway that leads to a spacious living room with bay window and log burner. The open plan kitchen / diner provides the perfect setting for family meals and gatherings, and has bi-fold doors to garden. The ground floor further benefits from w/c, utility room, internal access to garage and plenty of storage.

This property features four well appointed bedrooms each with large windows to provide a light and airy feel throughout, and further benefits from a family bathroom also. The master bedroom also has built in wardrobes, and ensuite.

The property also boasts a beautifully landscaped garden, perfect for enjoying the outdoors and hosting summer barbecues. To the front of the property is off road parking for multiple cars.

Don't miss the opportunity to make the exquisite property your own!

Price £425,000



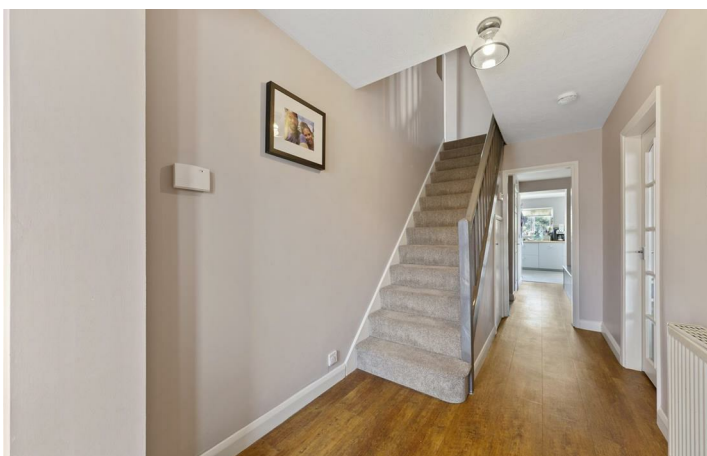
4



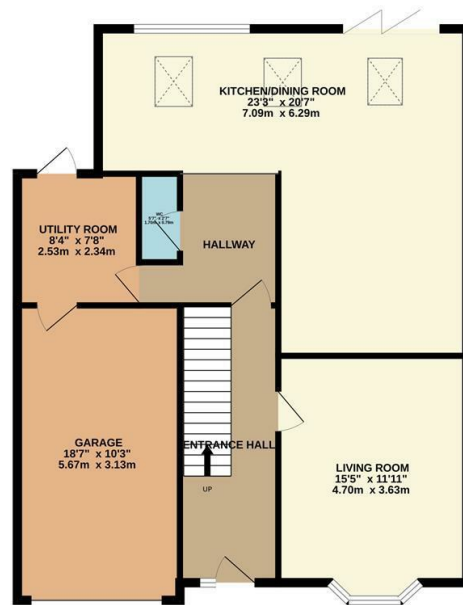
2



1



GROUND FLOOR



1ST FLOOR



Whilst every attempt has been made to ensure the accuracy of the floor plan contained here, measurements of doors, windows, rooms and any other items are approximate and no responsibility is taken for any error, omission, or mis-statement. The plan is copyright to Simpson and Partners and is for illustrative purposes and should only be used as such by any prospective purchaser. The services, systems and appliances shown have not been tested and no guarantee as to their operability can be given. Made with Metropix ©2024.



Energy Efficiency Rating

	Current	Potential
<i>Very energy efficient - lower running costs</i>		
(92 plus) <b>A</b>		
(81-91) <b>B</b>		
(69-80) <b>C</b>		
(55-68) <b>D</b>		
(39-54) <b>E</b>		
(21-38) <b>F</b>		
(1-20) <b>G</b>		
<i>Not energy efficient - higher running costs</i>		
<b>England &amp; Wales</b>	EU Directive 2002/91/EC	





When you buy with Simpson and Partners, you know **you'll be in safe hands**. From the moment you walk through our doors, we'll make you **feel truly welcome**. Our sales consultants and financial advisors will take you through **every step of the process**, offering **free expert advice** along the way, from help choosing the right mortgage and insurance through to finding your conveyancer. And if you need help selling your home too, **with over 20 years of local experience, you can trust us to get you moving**.



**Simpson  
& Partners**

Making Every  
Journey Personal



01536 518200

[kettering@simpsonandpartners.co.uk](mailto:kettering@simpsonandpartners.co.uk)

<https://www.simpsonandpartners.co.uk/>

1 Silver Street, Kettering, Northants, NN16 0BN