



14. High Street  
Kettering, NN14 4AA



**Simpson & Partners**

NO CHAIN - Located in the picturesque village of Cranford is this extended two bedroom semi-detached property with off road parking for several vehicles. The property occupies a generous plot. Benefitting from upvc double glazing, gas radiator central heating, 15' living room, separate dining room and a 16' x 15' kitchen/breakfast room. Then on the first floor there are two double bedrooms and a four piece bathroom suite. Outside there are various store rooms and a large rear garden. An internal viewing is recommended.



Offers In Excess Of £295,000

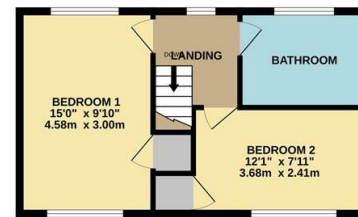
 2  1  4



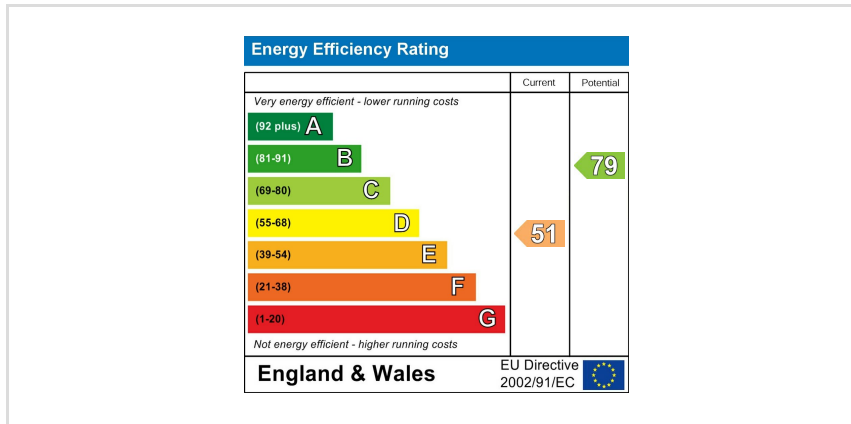
GROUND FLOOR



1ST FLOOR



Whilst every attempt has been made to ensure the accuracy of the floor plan contained here, measurements of doors, windows, rooms and any other items are approximate and no responsibility is taken for any error, omission, or mis-statement. The plan is copyright to Simpson and Partners and is for illustrative purposes and should only be used as such by any prospective purchaser. The services, systems and appliances shown have not been tested and no guarantee as to their operability can be given.  
Made with Metropex C2024



When you buy with Simpson and Partners, you know **you'll be in safe hands**. From the moment you walk through our doors, we'll make you **feel truly welcome**. Our sales consultants and financial advisors will take you through **every step of the process**, offering **free expert advice** along the way, from help choosing the right mortgage and insurance through to finding your conveyancer. And if you need help selling your home too, **with over 20 years of local experience, you can trust us to get you moving**.



**Simpson  
& Partners**

Making Every  
Journey Personal



01536 518200

[kettering@simpsonandpartners.co.uk](mailto:kettering@simpsonandpartners.co.uk)

<https://www.simpsonandpartners.co.uk/>

1 Silver Street, Kettering, Northants, NN16 0BN