



26 Hardwick Village
Hardwick, NN9 5AL



Simpson & Partners

Located on the outskirts of the village is this five bedroom detached property with four reception rooms and a double garage. Occupying a generous plot approx. 0.53 acres giving the buyer the opportunity to redevelop the plot or extend, subject to the necessary planning permissions. The property offer great potential and does require modernising and updating. It does benefit from double glazing, oil radiator central heating. kitchen with built in appliances, three piece bathroom suite with separate shower cubicle, front and a large rear garden. The current accommodation is approx 2400 sq ft.

Hardwick is a stunning village with a huge community feel situated off the beaten track, close to surrounding villages of Orlingbury and Little Harrowden, the entire village is a conservation area so if you're looking for unspoiled peace and quiet then Hardwick could be for you. There are also tree preservation orders on three lime trees in the rear garden.

Price £765,000



5



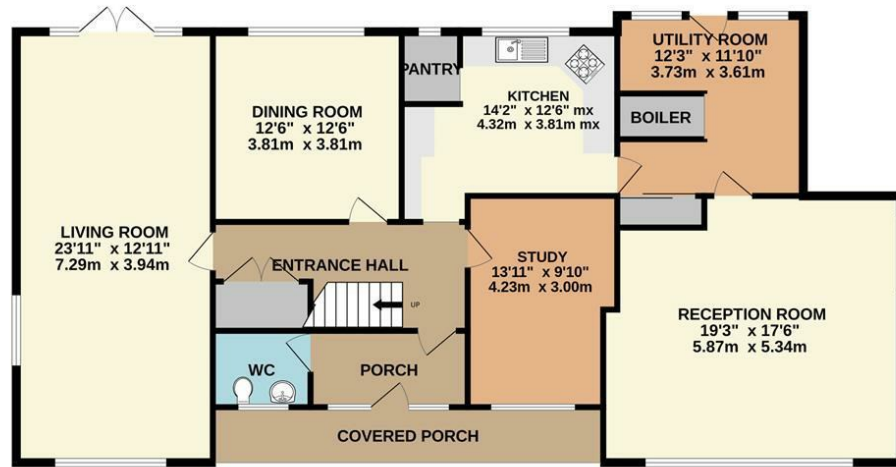
1



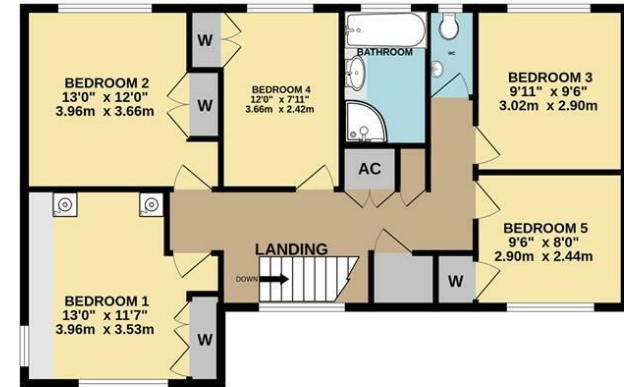
4



GROUND FLOOR



1ST FLOOR



Whilst every attempt has been made to ensure the accuracy of the floor plan contained here, measurements of doors, windows, rooms and any other items are approximate and no responsibility is taken for any error, omission, or mis-statement. The plan is copyright to Simpson and Partners and is for illustrative purposes and should only be used as such by any prospective purchaser. The services, systems and appliances shown have not been tested and no guarantee as to their operability can be given
 Made with Metropix ©2024



| Energy Efficiency Rating | | |
|---|----------------------------|-----------|
| | Current | Potential |
| Very energy efficient - lower running costs | | |
| (92 plus) A | | |
| (81-91) B | | |
| (69-80) C | | |
| (55-68) D | | |
| (39-54) E | | |
| (21-38) F | | |
| (1-20) G | | |
| Not energy efficient - higher running costs | | |
| England & Wales | EU Directive 2002/91/EC | |



When you buy with Simpson and Partners, you know **you'll be in safe hands**. From the moment you walk through our doors, we'll make you **feel truly welcome**. Our sales consultants and financial advisors will take you through **every step of the process**, offering **free expert advice** along the way, from help choosing the right mortgage and insurance through to finding your conveyancer. And if you need help selling your home too, **with over 20 years of local experience, you can trust us to get you moving**.



**Simpson
& Partners**

Making Every
Journey Personal



01536 518200

kettering@simpsonandpartners.co.uk

<https://www.simpsonandpartners.co.uk/>

1 Silver Street, Kettering, Northants, NN16 0BN