

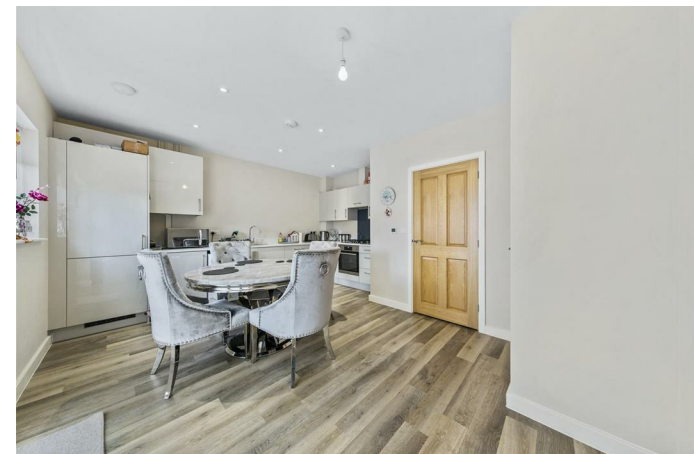


53 Foster Way
Kettering, NN15 7FA



Simpson & Partners

This modern three bedroom semi-detached house is perfect for those looking for a comfortable and stylish home. It features off-road parking, a spacious 16' kitchen/dining room with granite work surfaces and built-in appliances, underfloor heating to the ground floor, bedroom one with fitted wardrobes and a luxurious en suite shower room, bedroom two with fitted wardrobes, a contemporary three-piece bathroom suite, board loft with fitted shelving, gas radiator central heating, and Karndean flooring. The landscaped Westerly facing rear garden is ideal for enjoying the sunshine and outdoor entertaining. This property combines convenience, comfort, and modern living all in one! An internal viewing is essential to appreciate this stunning family home.



Offers In Excess Of £300,000



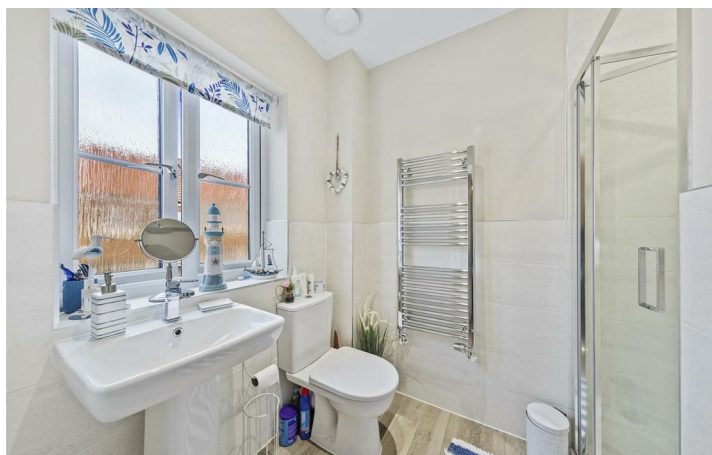
3



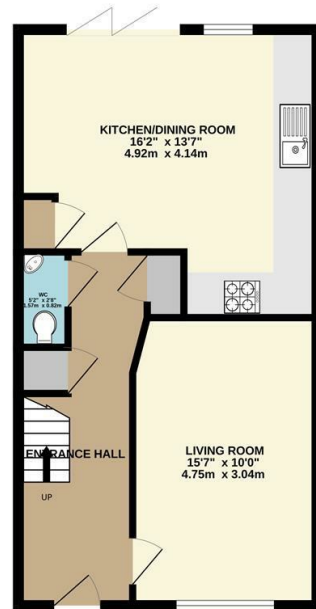
2



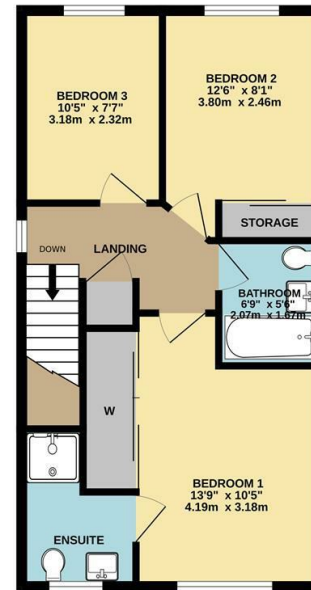
1



GROUND FLOOR



1ST FLOOR



Whilst every attempt has been made to ensure the accuracy of the floor plan contained here, measurements of doors, windows, rooms and any other items are approximate and no responsibility is taken for any error, omission, or mis-statement. The plan is copyright to Simpson and Partners and is for illustrative purposes and should only be used as such by any prospective purchaser. The services, systems and appliances shown have not been tested and no guarantee as to their operability can be given.
Made with Metrepro ©2024.



Energy Efficiency Rating

	Current	Potential
Very energy efficient - lower running costs		
(92 plus) A		95
(81-91) B	84	
(69-80) C		
(55-68) D		
(39-54) E		
(21-38) F		
(1-20) G		
Not energy efficient - higher running costs		
England & Wales	EU Directive 2002/91/EC	



When you buy with Simpson and Partners, you know **you'll be in safe hands**. From the moment you walk through our doors, we'll make you **feel truly welcome**. Our sales consultants and financial advisors will take you through **every step of the process**, offering **free expert advice** along the way, from help choosing the right mortgage and insurance through to finding your conveyancer. And if you need help selling your home too, **with over 20 years of local experience, you can trust us to get you moving**.



**Simpson
& Partners**

Making Every
Journey Personal



01536 518200

kettering@simpsonandpartners.co.uk

<https://www.simpsonandpartners.co.uk/>

1 Silver Street, Kettering, Northants, NN16 0BN