



6 Hodge Court
Kettering, NN15 7EZ



Simpson & Partners



NO CHAIN - Built in 2016 by Kier Homes is this superb four bedroom detached property with three reception rooms and a double garage. The property benefits from upvc double glazing, gas radiator central heating, stunning 18' kitchen/breakfast room with built in and integrated appliances, 18 bay fronted living room, bedroom one with built in wardrobes and an en-suite shower room, bedroom two with en-suite shower room, bedroom three & four with built in wardrobes, three piece family bathroom suite, front and rear gardens, off road parking and a double garage. The accommodation comprises entrance hall, downstairs WC, living room, dining room, study, kitchen/breakfast room and a utility room. Then on the first floor there are four bedrooms, two en-suites and a bathroom. An internal viewing is a must to appreciate this stunning family home. Approx 1808 sq ft.

More Photos To Follow Shortly.

 4

 3

 3

Price £435,000



Bedrooms One & Two Both With En-Suites

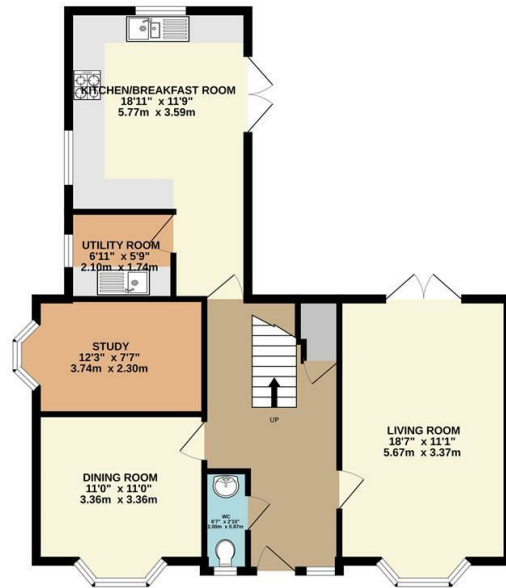




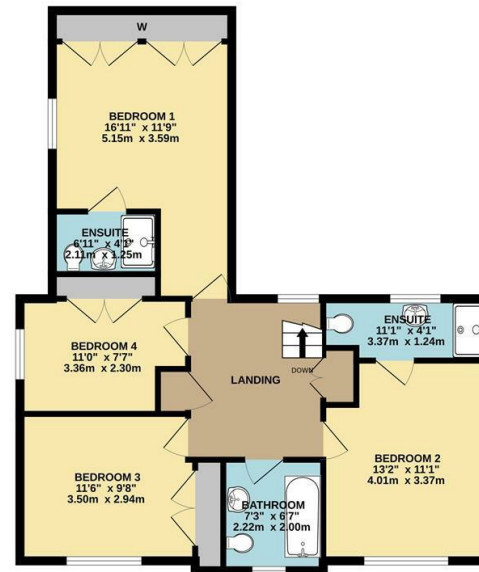
Enclosed Rear Garden



GROUND FLOOR



1ST FLOOR



Whilst every attempt has been made to ensure the accuracy of the floor plan contained here, measurements of doors, windows, rooms and any other items are approximate and no responsibility is taken for any error, omission, or mis-statement. The plan is copyright to Simpson and Partners and is for illustrative purposes and should only be used as such by any prospective purchaser. The services, systems and appliances shown have not been tested and no guarantee as to their operability can be given.
Made with Metropix ©2024



Energy Efficiency Rating

	Current	Potential
Very energy efficient - lower running costs		
(92 plus) A		92
(81-91) B	85	
(69-80) C		
(55-68) D		
(39-54) E		
(21-38) F		
(1-20) G		
Not energy efficient - higher running costs		
England & Wales	EU Directive 2002/91/EC	



When you buy with Simpson and Partners, you know **you'll be in safe hands**. From the moment you walk through our doors, we'll make you **feel truly welcome**. Our sales consultants and financial advisors will take you through **every step of the process**, offering **free expert advice** along the way, from help choosing the right mortgage and insurance through to finding your conveyancer. And if you need help selling your home too, **with over 20 years of local experience, you can trust us to get you moving**.



**Simpson
& Partners**

Making Every
Journey Personal



01536 518200

kettering@simpsonandpartners.co.uk

<https://www.simpsonandpartners.co.uk/>

1 Silver Street, Kettering, Northants, NN16 0BN