



36 Bedford Close

Barton Seagrave, Northants NN15 6TQ



Simpson & Partners



Located in a cul-de-sac is this deceptive and spacious extended four bedroom detached property. The property benefits from upvc double glazing, gas radiator central heating, 25' living/dining room with feature fireplace, luxury fitted 16' kitchen, 16' bedroom (used to be two bedrooms), luxury fitted three piece shower room, off road parking, garage/store and an enclosed rear garden with timber decked seating area. The accommodation comprises entrance porch, downstairs WC, living/dining room, kitchen and a utility room. Then on the first floor there are four bedrooms and a shower room. An internal viewing is a recommended to appreciate this superb family home.



Price £385,000



Large Living/Dining Room

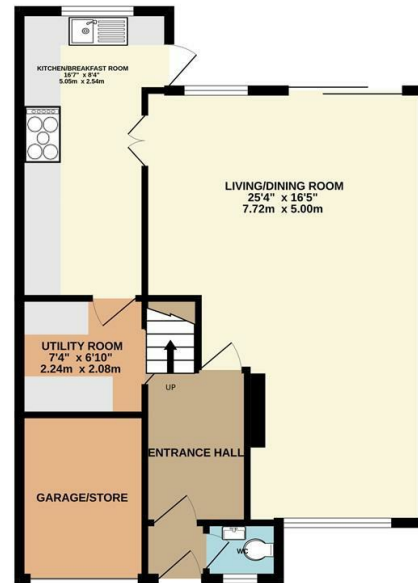




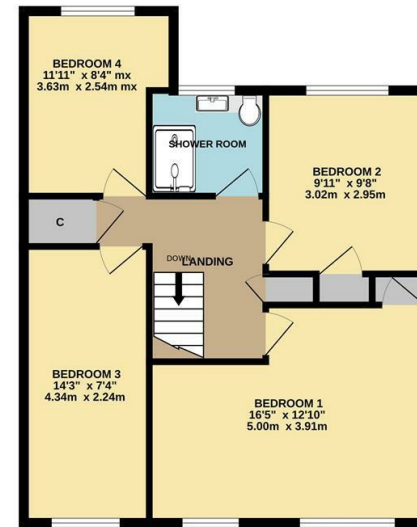
Enclosed Rear Garden



GROUND FLOOR



1ST FLOOR



Whilst every attempt has been made to ensure the accuracy of the floor plan contained here, measurements of doors, windows, rooms and any other items are approximate and no responsibility is taken for any error, omission, or mis-statement. The plan is copyright to Simpson and Partners and is for illustrative purposes and should only be used as such by any prospective purchaser. The services, systems and appliances shown have not been tested and no guarantee as to their operability can be given.  
Made with Metropix ©2024



Energy Efficiency Rating

	Current	Potential
Very energy efficient - lower running costs		
(92 plus) <b>A</b>		
(81-91) <b>B</b>		
(69-80) <b>C</b>		
(55-68) <b>D</b>		
(39-54) <b>E</b>		
(21-38) <b>F</b>		
(1-20) <b>G</b>		
Not energy efficient - higher running costs		
<b>England &amp; Wales</b>	EU Directive 2002/91/EC	



When you buy with Simpson and Partners, you know **you'll be in safe hands**. From the moment you walk through our doors, we'll make you **feel truly welcome**. Our sales consultants and financial advisors will take you through **every step of the process**, offering **free expert advice** along the way, from help choosing the right mortgage and insurance through to finding your conveyancer. And if you need help selling your home too, **with over 20 years of local experience, you can trust us to get you moving**.



**Simpson  
& Partners**

Making Every  
Journey Personal



01536 518200

[kettering@simpsonandpartners.co.uk](mailto:kettering@simpsonandpartners.co.uk)

<https://www.simpsonandpartners.co.uk/>

1 Silver Street, Kettering, Northants, NN16 0BN