



32 Baffin Close

Rothwell, Northamptonshire NN14 6TD



Simpson & Partners

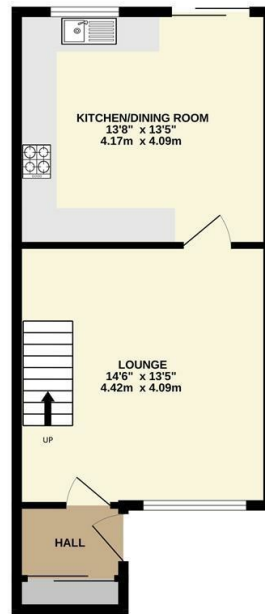
Simpson and Partners are pleased to offer for sale this superbly presented two bedroom terrace property. Within convenient access to the town centre and other local amenities. The property benefits from upvc double glazing, gas radiator central heating, modern fitted kitchen/dining room with built in appliances, 14' lounge, both bedrooms with fitted wardrobes, modern fitted three piece bathroom suite, front and rear gardens. The accommodation comprises entrance porch, lounge and a kitchen/dining room. Then on the first floor there are two bedrooms and a bathroom. An internal viewing is a must to appreciate this superb property.



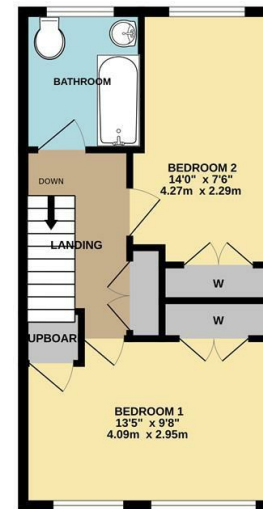
Offers In Excess Of £190,000



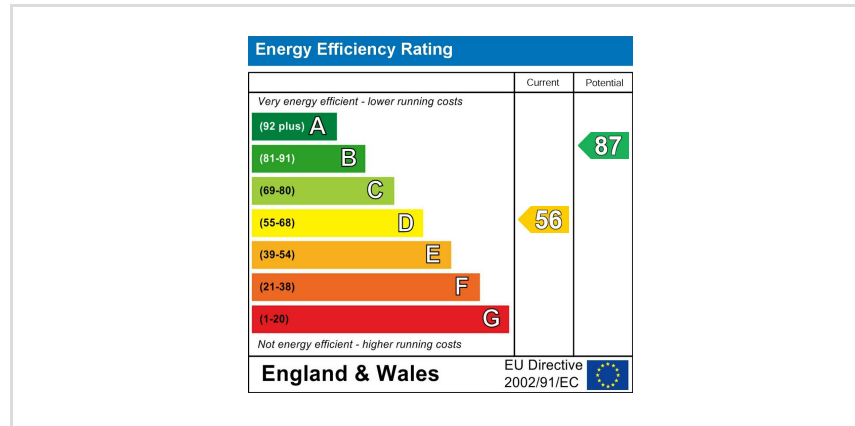
GROUND FLOOR



1ST FLOOR



Whilst every attempt has been made to ensure the accuracy of the floor plan contained here, measurements of doors, windows, stairs and any other items are approximate and no responsibility is taken for any error, omission, or mis-statement. The plan is copyright to Simpson and Partners and is for illustrative purposes and should only be used as such by any prospective purchaser. The services, systems and appliances shown have not been tested and no guarantee as to their operability can be given.
Made with Metshape (2022)



When you buy with Simpson and Partners, you know **you'll be in safe hands**. From the moment you walk through our doors, we'll make you **feel truly welcome**. Our sales consultants and financial advisors will take you through **every step of the process**, offering **free expert advice** along the way, from help choosing the right mortgage and insurance through to finding your conveyancer. And if you need help selling your home too, **with over 20 years of local experience, you can trust us to get you moving**.



**Simpson
& Partners**

Making Every
Journey Personal



01536 518200

kettering@simpsonandpartners.co.uk

<https://www.simpsonandpartners.co.uk/>

1 Silver Street, Kettering, Northants, NN16 0BN