



97z Manor Road  
Kettering, NN15 6WE



**Simpson & Partners**

Offered in stunning condition is this 3-bedroom semi-detached property situated on the prestigious Redrow homes development within the sought after location of Barton Seagrave.

On arriving at the property, you will be greeted by a low maintenance front garden with access to the hardstanding driveway offering parking for 2 cars. The entrance hall offers access to the W/c plus the lounge / dining room. The light and airy lounge / dining rooms offers lots of family space and offers access to the rear garden. Leading off the dining area is the modern fitted kitchen again all offered in immaculate condition and offers a selection of built in appliances and a wealth of storage and workspace. To the first floor there are 3 well-proportioned bedrooms plus a 3-piece family bathroom. Outside the rear garden offers a good degree of privacy and has a low maintenance slabbed patio area and side access to the driveway.

The lease term is 125 years from 1 January 2017 therefore number of years remaining is 119.



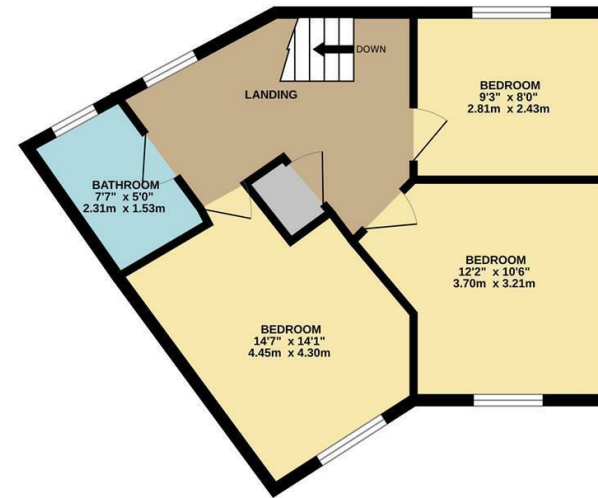
£270,000



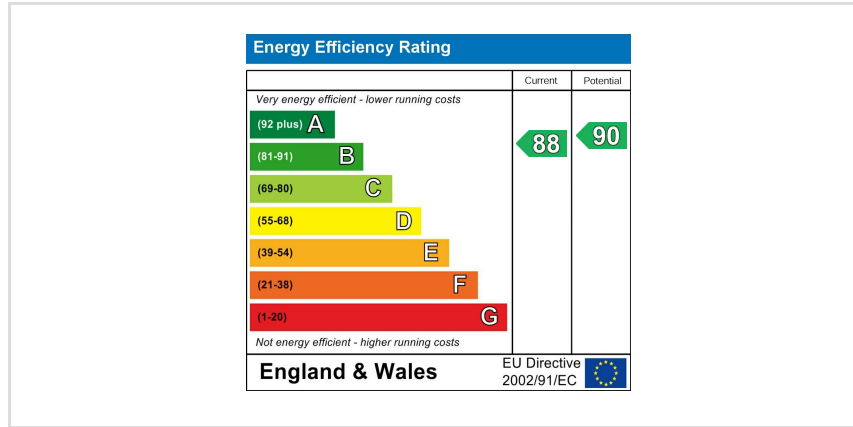
GROUND FLOOR



1ST FLOOR



Whilst every attempt has been made to ensure the accuracy of the floor plan contained here, measurements of doors, windows, rooms and any other items are approximate and no responsibility is taken for any error, omission, or mis-statement. The plan is copyright to Simpson and Partners and is for illustrative purposes and should only be used as such by any prospective purchaser. The services, systems and appliances shown have not been tested and no guarantee as to their operability can be given.  
Made with Metropix ©2023



When you buy with Simpson and Partners, you know **you'll be in safe hands**. From the moment you walk through our doors, we'll make you **feel truly welcome**. Our sales consultants and financial advisors will take you through **every step of the process**, offering **free expert advice** along the way, from help choosing the right mortgage and insurance through to finding your conveyancer. And if you need help selling your home too, **with over 20 years of local experience, you can trust us to get you moving**.



**Simpson  
& Partners**

Making Every  
Journey Personal



01536 518200

[kettering@simpsonandpartners.co.uk](mailto:kettering@simpsonandpartners.co.uk)

<https://www.simpsonandpartners.co.uk/>

1 Silver Street, Kettering, Northants, NN16 0BN