



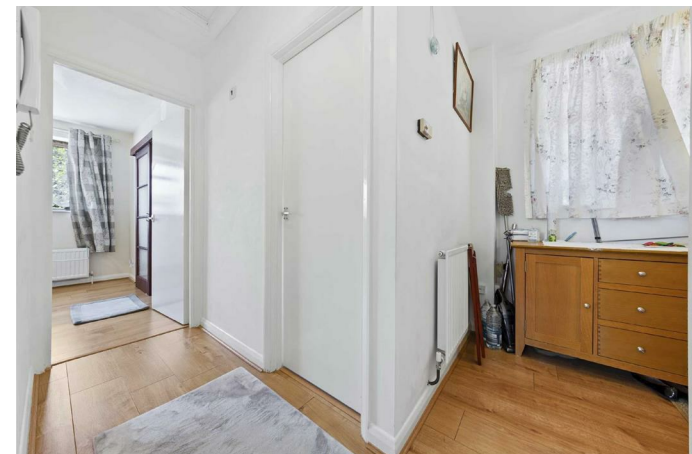
Flat 6 52 Regents Court
Kettering, Northamptonshire NN15 7NP



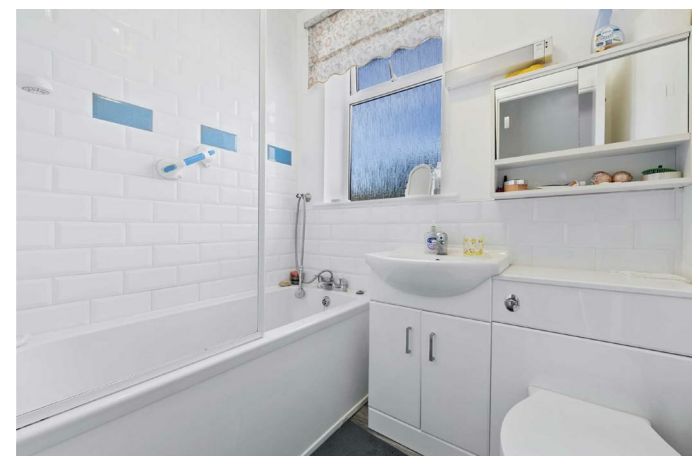
Simpson & Partners

NO CHAIN - Within walking distance of the town centre is this one bedroom first floor apartment with allocated off road parking. The property benefits from security intercom system, upvc double glazing, gas radiator central heating, fitted kitchen with built in appliances, 14' living room with wood laminate flooring, bedroom with fitted bedroom furniture and a three piece bathroom suite. The accommodation comprises communal hallway, entrance hall, living room, kitchen, bedroom and a bathroom. An internal viewing is recommended to avoid any disappointment. Service charge is 97.39pcm and ground rent is £50 per annum - 99 year lease with 65 years remaining.

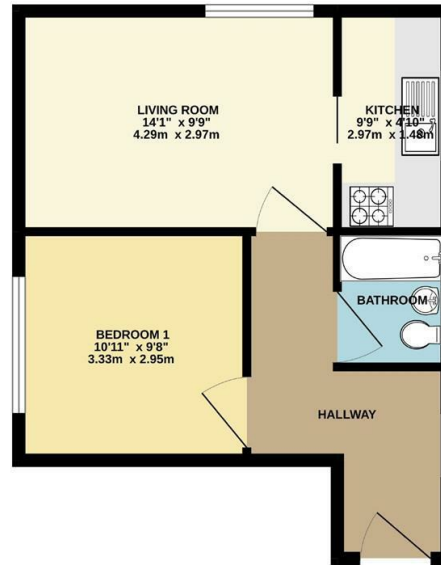
///leader.swear.bind



Price £95,000



GROUND FLOOR



Whilst every attempt has been made to ensure the accuracy of the floor plan contained here, measurements of doors, windows, rooms and any other items are approximate and the responsibility is taken for any error, omission, or misstatement. The plan is copyright to Simpson and Partners and is for illustrative purposes and should only be used in conjunction with any product or purchase. The services, systems and appliances shown have not been used in accordance with their operability can be given. Made with Metreplan CM202



Energy Efficiency Rating

	Current	Potential
<i>Very energy efficient - lower running costs</i>		
(92 plus) A		
(81-91) B		
(69-80) C		
(55-68) D		
(39-54) E		
(21-38) F		
(1-20) G		
<i>Not energy efficient - higher running costs</i>		
England & Wales	EU Directive 2002/91/EC	



When you buy with Simpson and Partners, you know **you'll be in safe hands**. From the moment you walk through our doors, we'll make you **feel truly welcome**. Our sales consultants and financial advisors will take you through **every step of the process**, offering **free expert advice** along the way, from help choosing the right mortgage and insurance through to finding your conveyancer. And if you need help selling your home too, **with over 20 years of local experience, you can trust us to get you moving**.



**Simpson
& Partners**

Making Every
Journey Personal



01536 518200

kettering@simpsonandpartners.co.uk

<https://www.simpsonandpartners.co.uk/>

1 Silver Street, Kettering, Northants, NN16 0BN