

HUNTERS®

HERE TO GET *you* THERE

Chessbury Road, Chesham, Buckinghamshire, HP5 1JR Guide Price £550,000



An extended four double bedroom semi-detached family home situated in a sought after location near to the historic Old Town of Chesham, ideally positioned just over half a mile from the station and shops, within close proximity of highly regarded local schooling to include Thomas Harding Junior School and Chesham Grammar School. This neatly presented property has been well maintained by the current owners and offers potential for further enlargement, subject to the relevant consents, whilst providing bright and airy accommodation comprising: entrance hall, sitting room, stylish 18ft refitted kitchen dining room with door to the garden. The first and second floors offer a generous landing, four double bedrooms, two modern bathrooms and a separate cloakroom. Externally, there is a lawned garden to the front with flower beds and hedging with a paved pathway to the secluded rear garden which is mainly laid to lawn with an array of flowers, shrubs and bushes together with a patio area ideal for alfresco dining and outdoor entertaining. There are also two sheds and a brick built store with power and light. EPC Rating: C

NB: Please note the seller of this property is a connected person to Hunters Estate Agents.

8 Hill Avenue, Amersham, HP6 5BW
T: 01494 723322 F: 01494 723332
E: amersham@hunters.com

83 High Street, Chesham, HP5 1DE
T: 01494 775544 F: 01494 774525
E: chesham@hunters.com





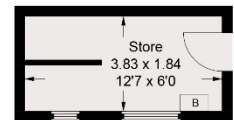
CH 2.47 = Ceiling Height

[Dashed line] = Reduced headroom below 1.5m / 5'0"

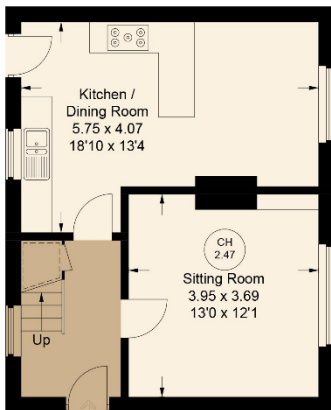


1 Chessbury Road, Chesham

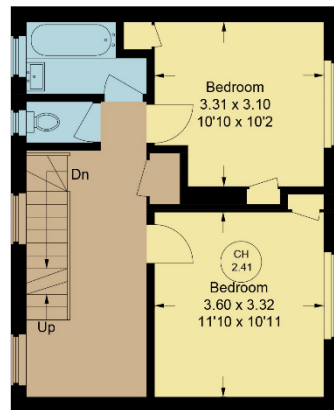
Approximate Gross Internal Area
 Ground Floor = 42.6 sq m / 458 sq ft
 First Floor = 42.3 sq m / 455 sq ft
 Second Floor = 28.1 sq m / 302 sq ft
 Store = 7.1 sq m / 76 sq ft
 Total = 120.1 sq m / 1291 sq ft



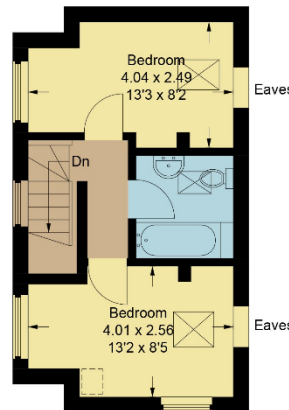
(Not Shown In Actual Location / Orientation)



IN
Ground Floor



First Floor



Second Floor

Floor Plan produced for Hunters by Media Arcade ©.

Illustration for identification purposes only. Window and door openings are approximate. Whilst every attempt is made to assure accuracy in the preparation of this plan, please check all dimensions, shapes and compass bearings before making any decisions reliant upon them.

MATERIAL INFORMATION

TENURE: FREEHOLD

COUNCIL TAX: BAND D

No statement in these details is to be relied upon as representation of fact, and purchasers should satisfy themselves by inspection or otherwise as to the accuracy of the statements contained within. These details do not constitute any part of any offer or contract. **Hunters** and their employees and agents do not have any authority to give any warranty or representation whatsoever in respect of this property. These details and all statements herein are provided without any responsibility on the part of **Hunters** or the vendors. **Equipment:** **Hunters** has not tested the equipment or central heating system mentioned in these particulars and the purchasers are advised to satisfy themselves as to the working order and condition. **Measurements:** Great care is taken when measuring, but measurements should not be relied upon for ordering carpets, equipment, etc. The Laws of copyright protect this material. **Hunters** is the Owner of the copyright. This property sheet forms part of our database, and is protected by the database right and copyright laws. No unauthorised copying or distribution without permission.