

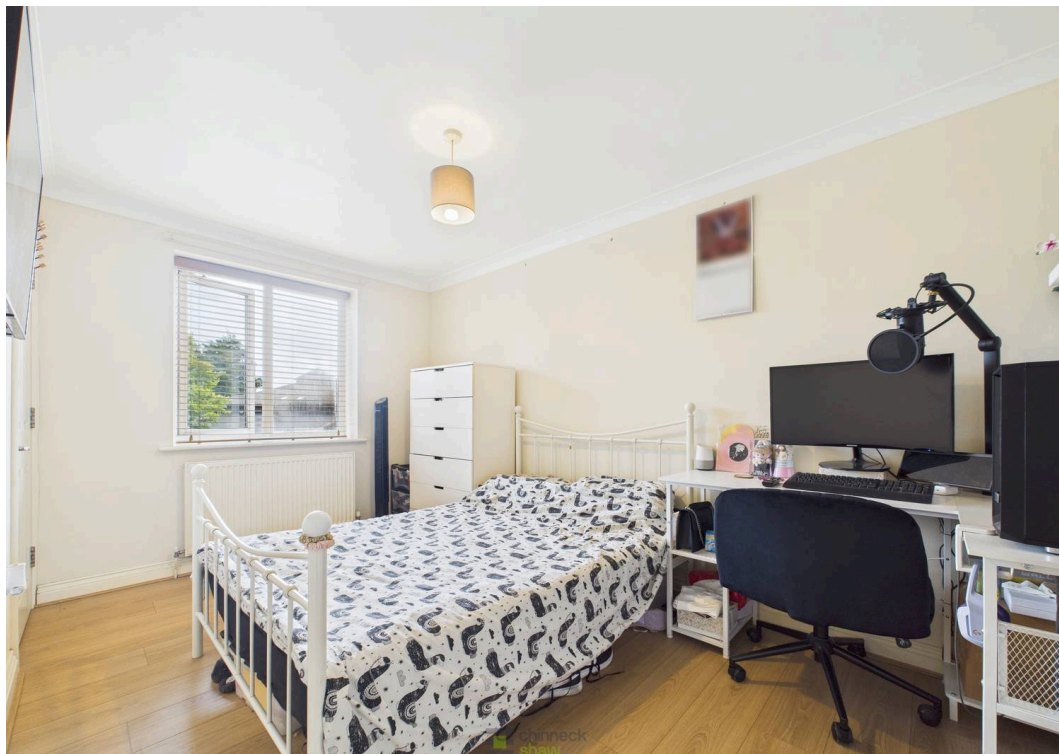
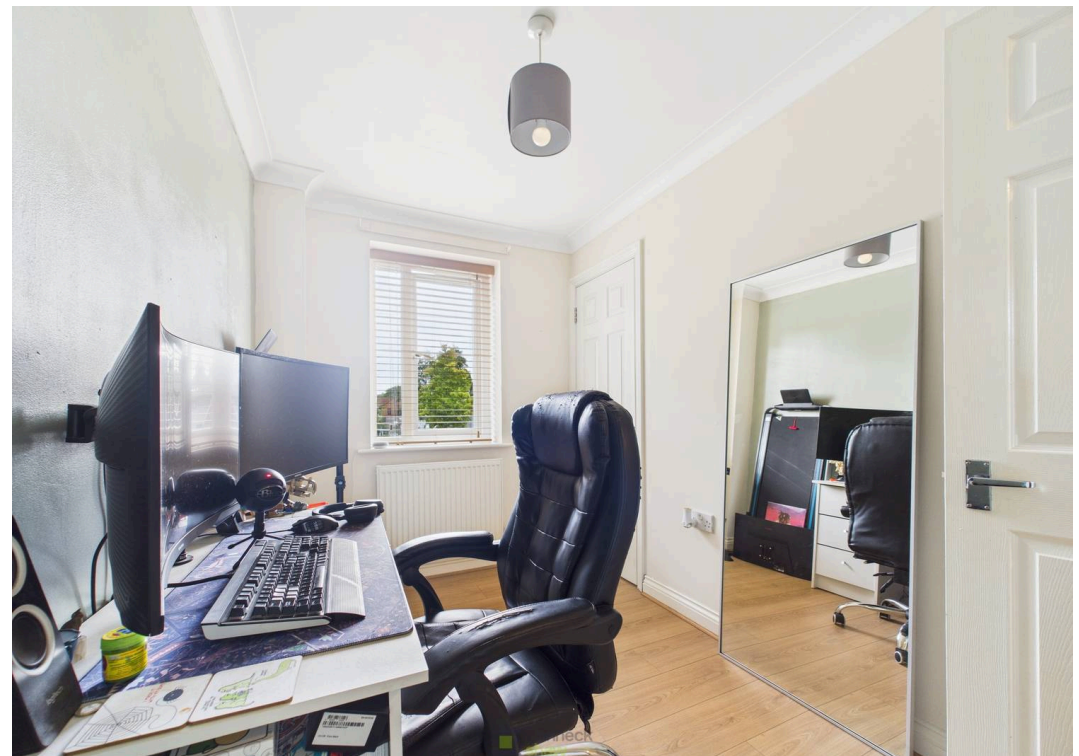


Flat 3, George Mews Little George Street, Portsmouth

Offers in Region of £140,000









## Flat 3

George Mews Little George Street,  
Portsmouth

This bright and modern two-bedroom apartment is set in a superb central location, close to shops, cafés, bars, and excellent road links.

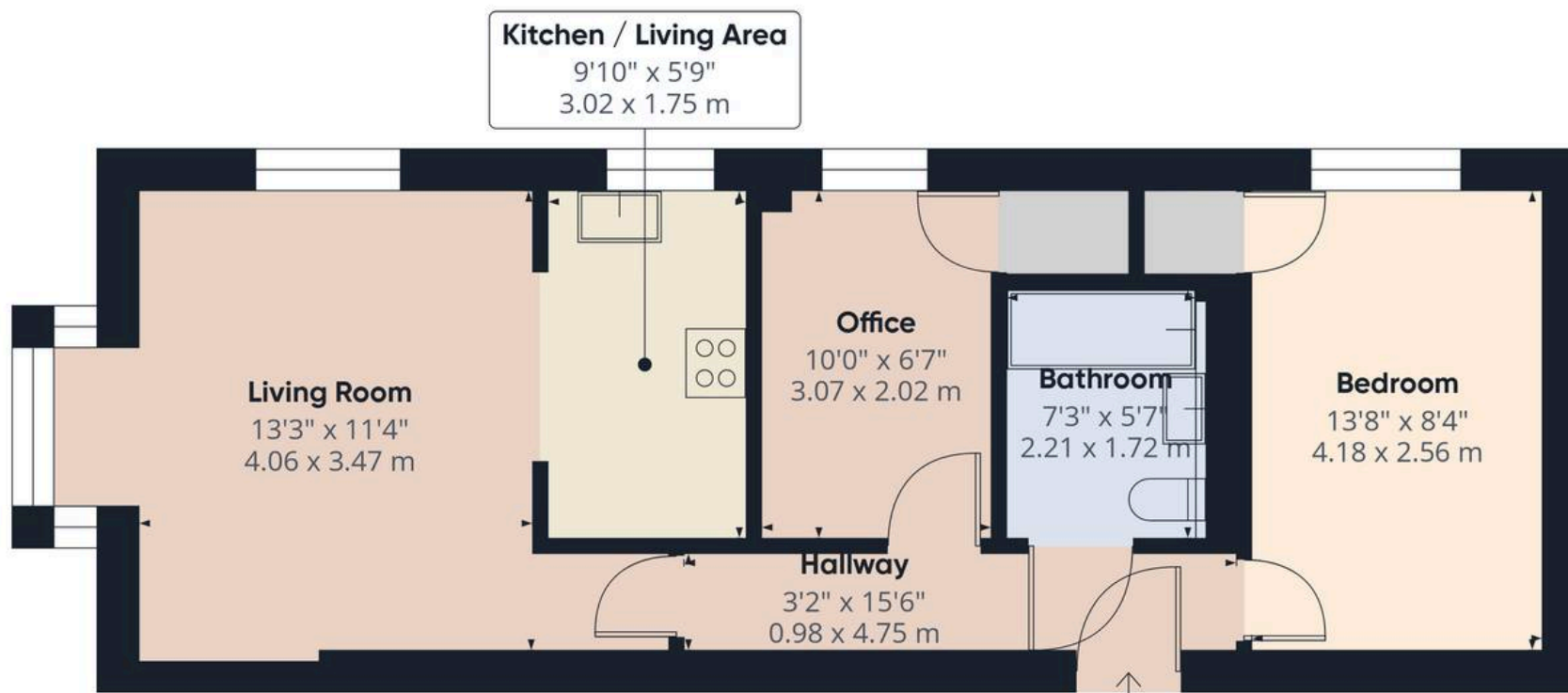
Inside, a welcoming hallway with stylish flooring leads through to a generous living area, flooded with natural light from dual-aspect windows. The space is perfect for both relaxing and entertaining, with a well-fitted kitchen just off the living room, complete with integrated appliances and plenty of storage.

There are two good-sized bedrooms, each with built-in storage. The second bedroom is currently used as a home office but would also work well as a guest room or nursery. A smart bathroom with bath and shower completes the accommodation.

Added bonus: an allocated shed for extra storage.

**Material Information** • Tenure: Leasehold • Council Tax: Band B • Electricity: Mains Supply • Heating: Gas • Water Supply: Mains supply • Sewage: Mains Supply • Broadband: Standard, Superfast and Ultrafast Fibre are all available in this area • Parking: On Street • Mobile: Ofcom official website checker states that EE, Vodafone, O2 and Three available in the area • Flood Risk: Low risk





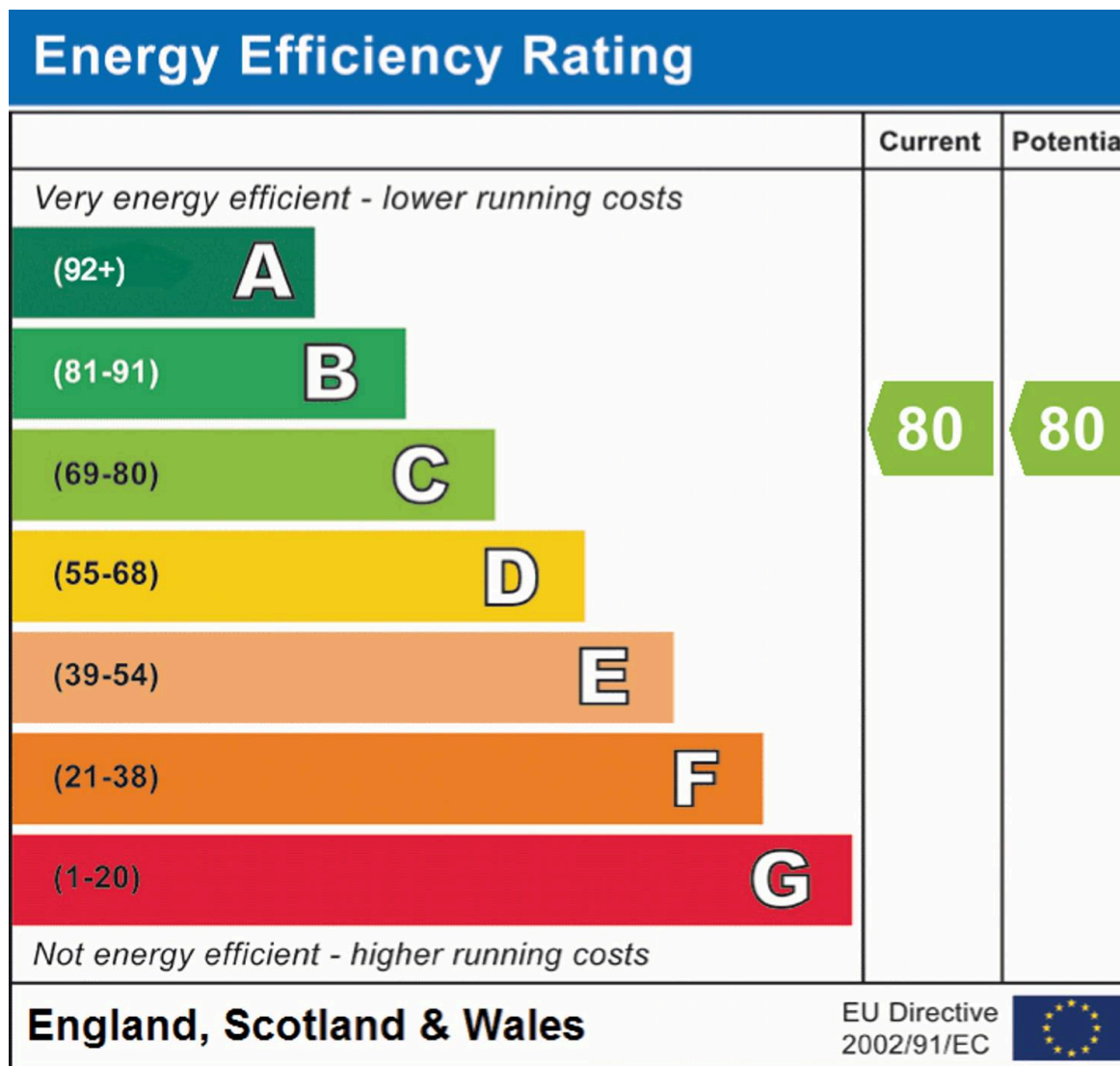
Approximate total area<sup>(1)</sup>  
531 ft<sup>2</sup>  
49.3 m<sup>2</sup>

(1) Excluding balconies and terraces

Calculations reference the RICS IPMS 3C standard. Measurements are approximate and not to scale. This floor plan is intended for illustration only.

GIRAFFE360





## Chinneck Shaw

Bridge House, Milton Road, Portsmouth – PO3 6AN

023 9282 6731

hello@chinneckshaw.co.uk

www.chinneckshaw.co.uk/

Chinneck Shaw, Bridge House, Milton Road, PO3 6AN Consumer Protection from Unfair Trading Regulations 2008: These details are for guidance only and complete accuracy cannot be guaranteed. If there is any point which is of particular importance, verification should be obtained. The do not constitute a contract or part of a contract. All measurements are approximate. No guarantee can be given with regard to planning permissions or fitness for purpose. No apparatus, equipment, fixture or fitting has been tested. Items shown in the photographs are NOT necessarily included. Interested Parties are advised to check availability and make an appointment to view before travelling to see a property.