



31 Target Road, Portsmouth

Offers in Region of £280,000





31 Target Road

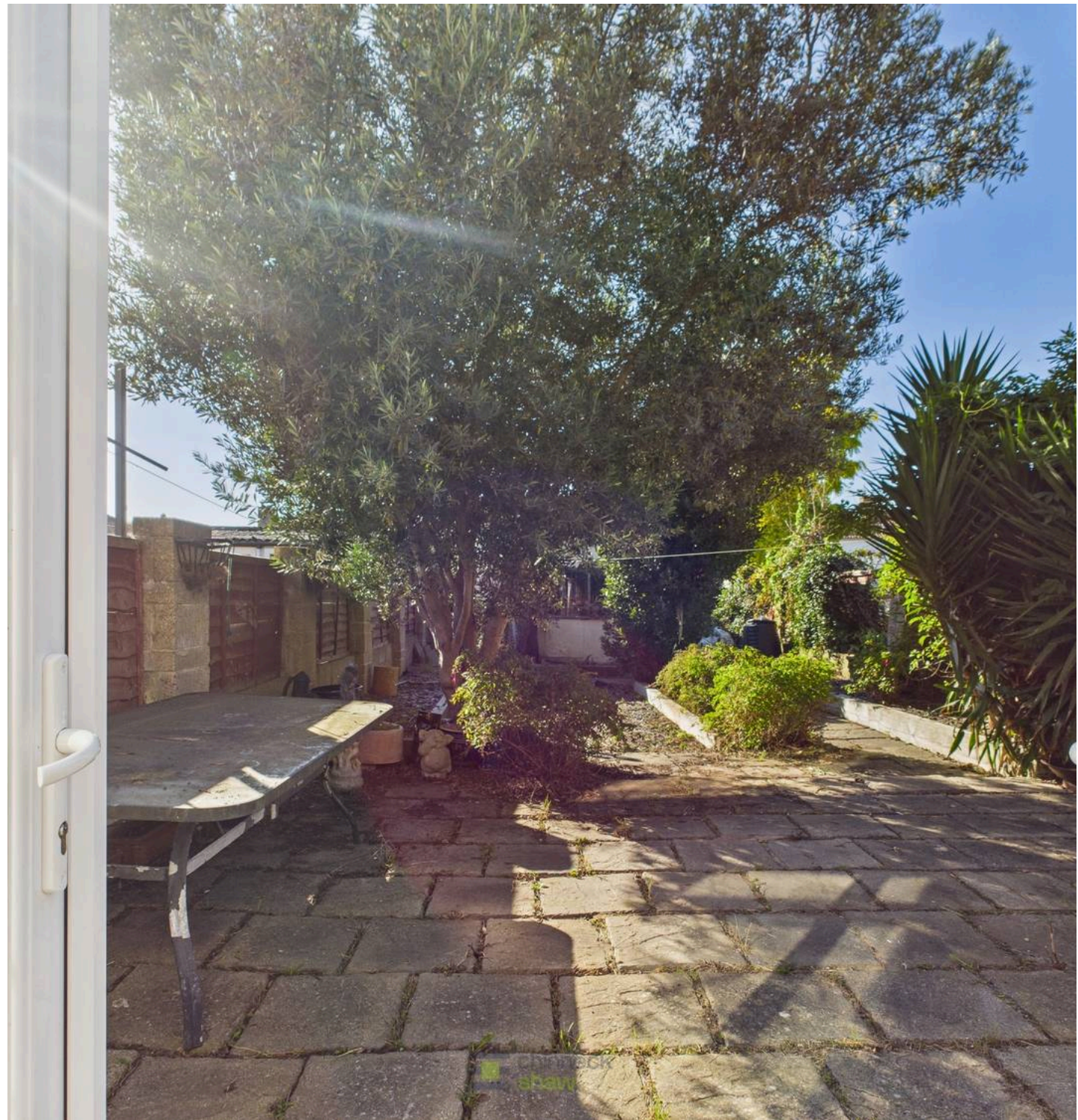
Portsmouth

This charming family home is ideally located in a quiet residential area with excellent road links and local amenities. Set in a small cul-de-sac with rear access via Hillsdown Avenue, it also benefits from a garage.

On entering, a small porch leads into a welcoming hallway with wood flooring throughout the ground floor. The spacious lounge features a generous bay window and a feature fireplace, perfect for relaxing or entertaining. The kitchen, fitted with units and a sink, flows into a light, airy dining room with a further fireplace. A sunroom with storage and double patio doors opens onto the garden.

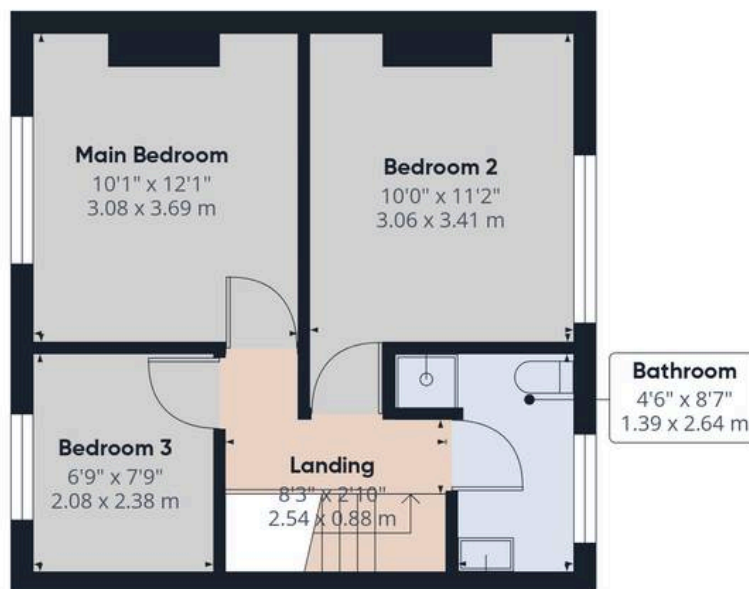
Upstairs, two double bedrooms overlook the front and rear, complemented by a single bedroom with ample storage. The bathroom includes a bath, separate shower, and half-tiled walls. The garden offers a paved patio, brick shed, barbecue, and raised flower borders. Early viewing is highly recommended.

Material Information • Tenure: Freehold • Council Tax: Band B • Electricity: Mains Supply • Heating: Gas • Water Supply: Mains supply • Sewage: Mains Supply • Broadband: Standard, Superfast and Ultrafast Fibre are all available in this area • Parking: On Street & Garage • Mobile: Ofcom official website checker states that EE, Vodafone, O2 and Three available in the area • Flood Risk: Low risk





Ground Floor Building 1



Floor 1 Building 1



Ground Floor Building 2

Approximate total area⁽¹⁾

1084 ft²

100.8 m²

Reduced headroom

7 ft²

0.6 m²

(1) Excluding balconies and terraces

Reduced headroom

Below 5 ft/1.5 m

Calculations reference the RICS IPMS 3C standard. Measurements are approximate and not to scale. This floor plan is intended for illustration only.

GIRAFFE360



Chinneck Shaw

Bridge House, Milton Road, Portsmouth – PO3 6AN

023 9282 6731

hello@chinneckshaw.co.uk

www.chinneckshaw.co.uk/

Chinneck Shaw, Bridge House, Milton Road, PO3 6AN Consumer Protection from Unfair Trading Regulations 2008: These details are for guidance only and complete accuracy cannot be guaranteed. If there is any point which is of particular importance, verification should be obtained. They do not constitute a contract or part of a contract. All measurements are approximate. No guarantee can be given with regard to planning permissions or fitness for purpose. No apparatus, equipment, fixture or fitting has been tested. Items shown in the photographs are NOT necessarily included. Interested Parties are advised to check availability and make an appointment to view before travelling to see a property.