



70 Glencoe Road, Portsmouth

Offers in Region of £175,000









70 Glencoe Road

Portsmouth

This beautifully presented one-bedroom ground floor flat is set within a secure gated development, offering both privacy and convenience. Ideally located, it benefits from excellent road and bus links, with easy access to all that Portsmouth has to offer. Inside, a small hallway leads into a bright and airy living room, decorated in neutral tones and filled with natural light from dual-aspect windows. The inner hallway connects to a stylish bathroom with a large walk-in shower, and a generous double bedroom complete with built-in wardrobes.

The modern kitchen features a built-in oven and hob, breakfast bar, and a half-glass door opening directly to the private garden. Tastefully landscaped, the outdoor space is perfect for relaxing or entertaining, and also includes a storage shed.

Ready to move into, this home is an ideal first-time purchase or investment.

Material Information • Tenure: Leasehold • Council Tax: Band A • Electricity: Mains Supply • Heating: Gas • Water Supply: Mains supply • Sewage: Mains Supply • Broadband: Standard, Superfast and Ultrafast Fibre are all available in this area • Parking: Allocated Parking • Mobile: Ofcom official website checker states that EE, Vodafone, O2 and Three available in the area • Flood Risk: Low risk



Entry
3'8" x 4'1"
1.12 x 1.25 m

Hallway
3'2" x 5'11"
0.98 x 1.82 m

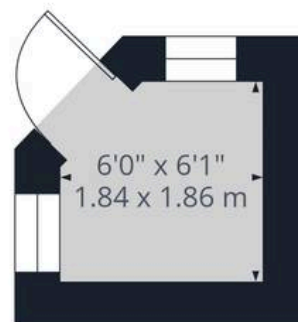
Bedroom
8'7" x 13'8"
2.63 x 4.19 m

Living Room
15'8" x 10'10"
4.79 x 3.32 m

Bathroom
7'2" x 5'8"
2.20 x 1.75 m

Kitchen
10'10" x 10'2"
3.31 x 3.10 m

Ground Floor Building 1



Ground Floor Building 2

Approximate total area⁽¹⁾
552 ft²
51.3 m²

(1) Excluding balconies and terraces

Calculations reference the RICS IPMS 3C standard. Measurements are approximate and not to scale. This floor plan is intended for illustration only.

GIRAFFE360



Chinneck Shaw

Bridge House, Milton Road, Portsmouth – PO3 6AN

023 9282 6731

hello@chinneckshaw.co.uk

www.chinneckshaw.co.uk/

Chinneck Shaw, Bridge House, Milton Road, PO3 6AN Consumer Protection from Unfair Trading Regulations 2008: These details are for guidance only and complete accuracy cannot be guaranteed. If there is any point which is of particular importance, verification should be obtained. The do not constitute a contract or part of a contract. All measurements are approximate. No guarantee can be given with regard to planning permissions or fitness for purpose. No apparatus, equipment, fixture or fitting has been tested. Items shown in the photographs are NOT necessarily included. Interested Parties are advised to check availability and make an appointment to view before travelling to see a property.