



46 Westover Road, Portsmouth

£295,000

 chinneckshaw







# 46 Westover Road

## Portsmouth

Charming Three-Bedroom Semi-Detached Home  
Located in a sought-after residential area, this charming three-bedroom semi-detached home blends period features with modern conveniences. Ideal for families or professionals, it is close to amenities, schools, and transport links.

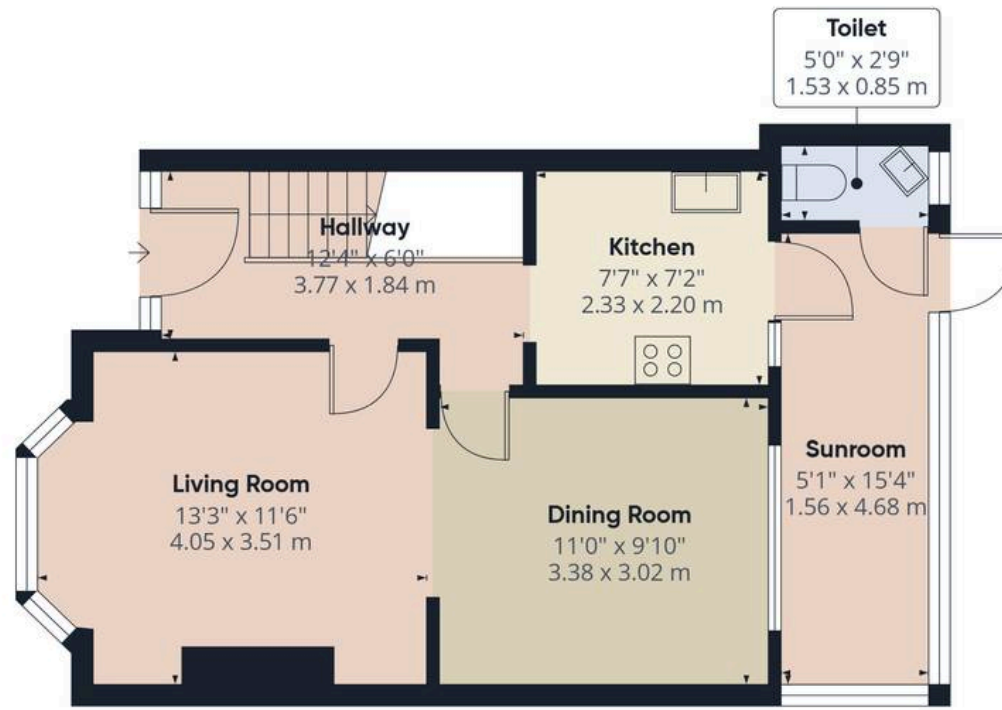
The ground floor features a bright hallway with storage, leading to an open-plan living/dining room complete with a large bay window and a feature fireplace. The kitchen is modern and functional, designed for keen cooks, with an adjacent sunroom offering space for seating, appliances, and access to a downstairs cloakroom. A door from the sunroom opens onto a low maintenance garden with a summer house, perfect for a home office or studio.

Upstairs, there are three spacious bedrooms, two with built-in storage, and a modern bathroom with a walk-in shower.

This property offers a perfect mix of character, practicality, and location, making it a rare and desirable find for any buyer.

Material Information • Tenure: Freehold • Council Tax: Band C • Electricity: Mains Supply • Heating: Electric • Water Supply: Mains supply • Sewage: Mains Supply • Broadband: Standard, Superfast and Ultrafast Fibre are all available in this area • Parking: On Street • Mobile: Ofcom official website checker states that EE, Vodafone, O2 and Three available in the area • Flood Risk: Low risk





Ground Floor Building 1



Ground Floor Building 2

Floor 1 Building 1

Approximate total area<sup>(1)</sup>

901 ft<sup>2</sup>

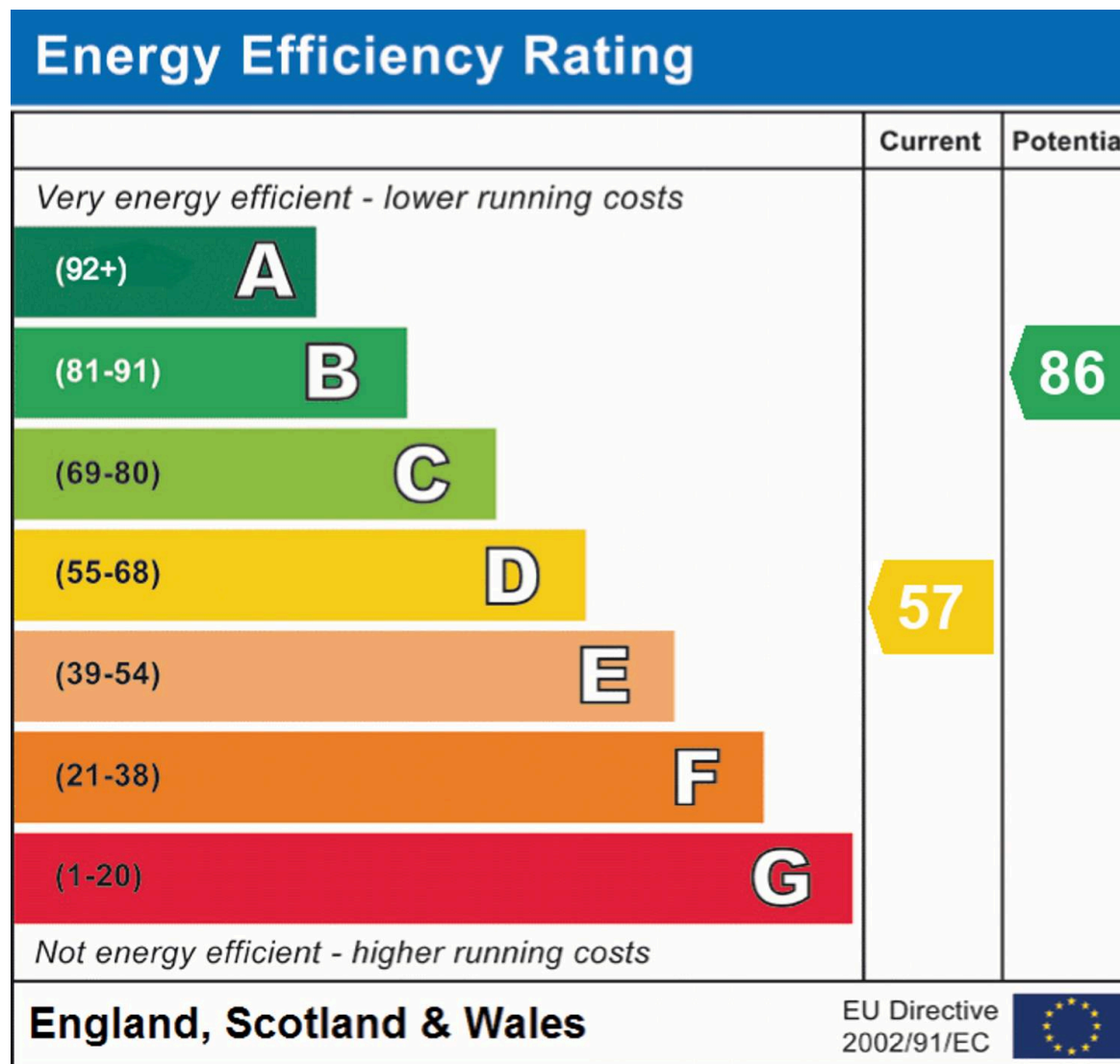
83.7 m<sup>2</sup>

(1) Excluding balconies and terraces

Calculations reference the RICS IPMS 3C standard. Measurements are approximate and not to scale. This floor plan is intended for illustration only.

GIRAFFE360





## Chinneck Shaw

Bridge House, Milton Road, Portsmouth – PO3 6AN

023 9282 6731

hello@chinneckshaw.co.uk

www.chinneckshaw.co.uk/

Chinneck Shaw, Bridge House, Milton Road, PO3 6AN Consumer Protection from Unfair Trading Regulations 2008: These details are for guidance only and complete accuracy cannot be guaranteed. If there is any point which is of particular importance, verification should be obtained. The do not constitute a contract or part of a contract. All measurements are approximate. No guarantee can be given with regard to planning permissions or fitness for purpose. No apparatus, equipment, fixture or fitting has been tested. Items shown in the photographs are NOT necessarily included. Interested Parties are advised to check availability and make an appointment to view before travelling to see a property.