



Upper Flat, 136 Kirby Road, Portsmouth

Offers in Region of £170,000

 chinneckshaw



Upper Flat

136 Kirby Road, Portsmouth

We are delighted to offer this one bedroom first floor flat, located not only in Kirby Road but also close to College Park too! It's a great location and we think would make a perfect first time purchase or investment. Close to local amenities and with easy access to the Eastern Road and the M27, this flat is in a great location.

From the front door, there is a staircase up to a good size landing. The Lounge is an excellent size and shape being dominated by a square bay window making this room light and bright.

The Double Bedroom is at the rear of the property and benefits from a built-in wardrobe, whilst having space for further bedroom furniture.

The bathroom comes next and is a modern white suite, fully tiled with wash hand basin and WC.

Lastly the kitchen has everything required. A modern fitted range of white gloss wall and base cabinets with plenty of work space and integrated oven and hob with cooker hood over. There is also space and plumbing for a washing machine and fridge freezer.

The property is currently empty with no forward chain so we think would make an excellent investment or first time purchase.

Leasehold remaining - approximately 87 years

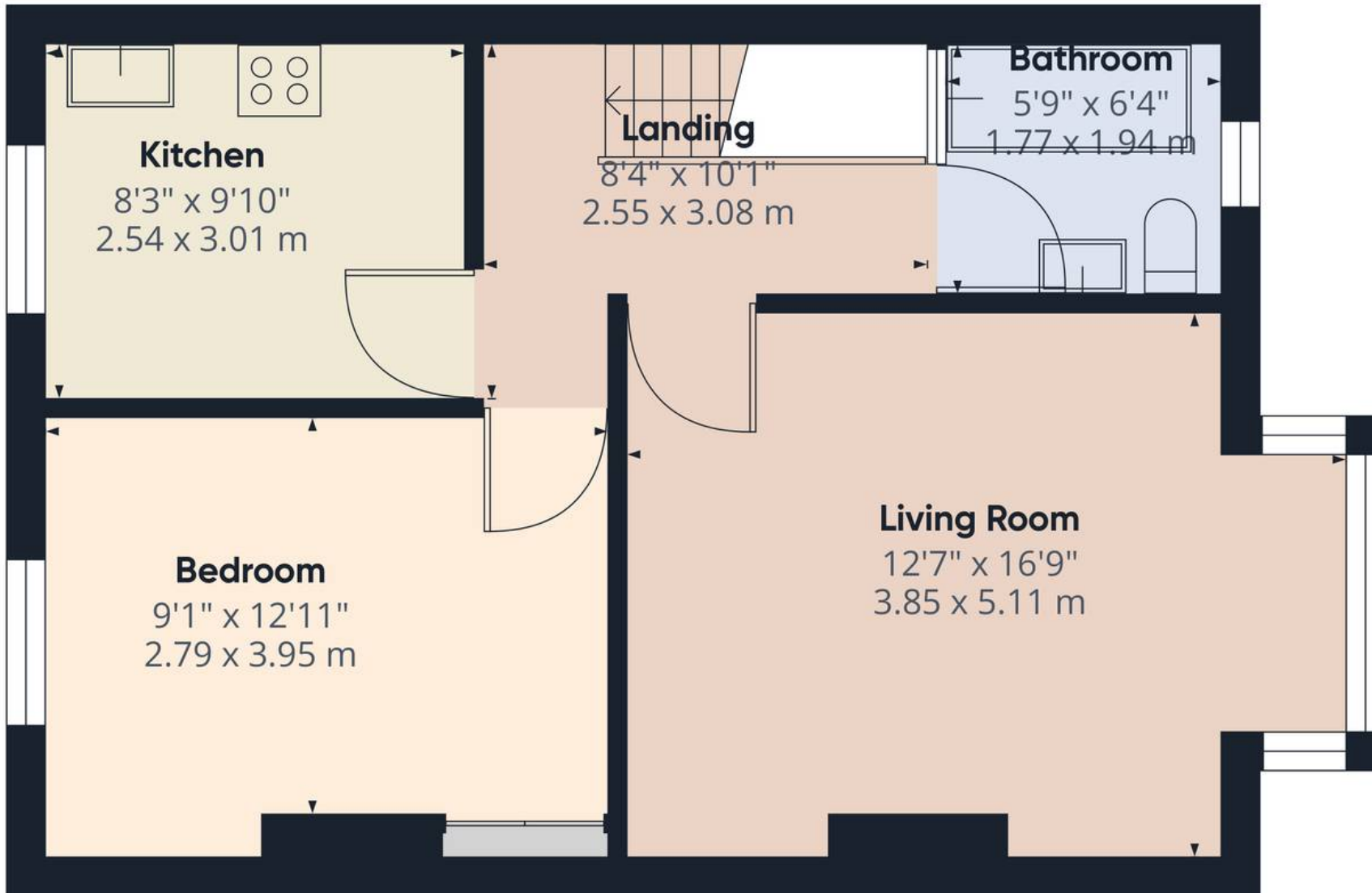
Service Charge & Ground Rent - TBC

Council Tax Band A

Council Tax band: C

Tenure: Leasehold





Approximate total area⁽¹⁾

482.98 ft²

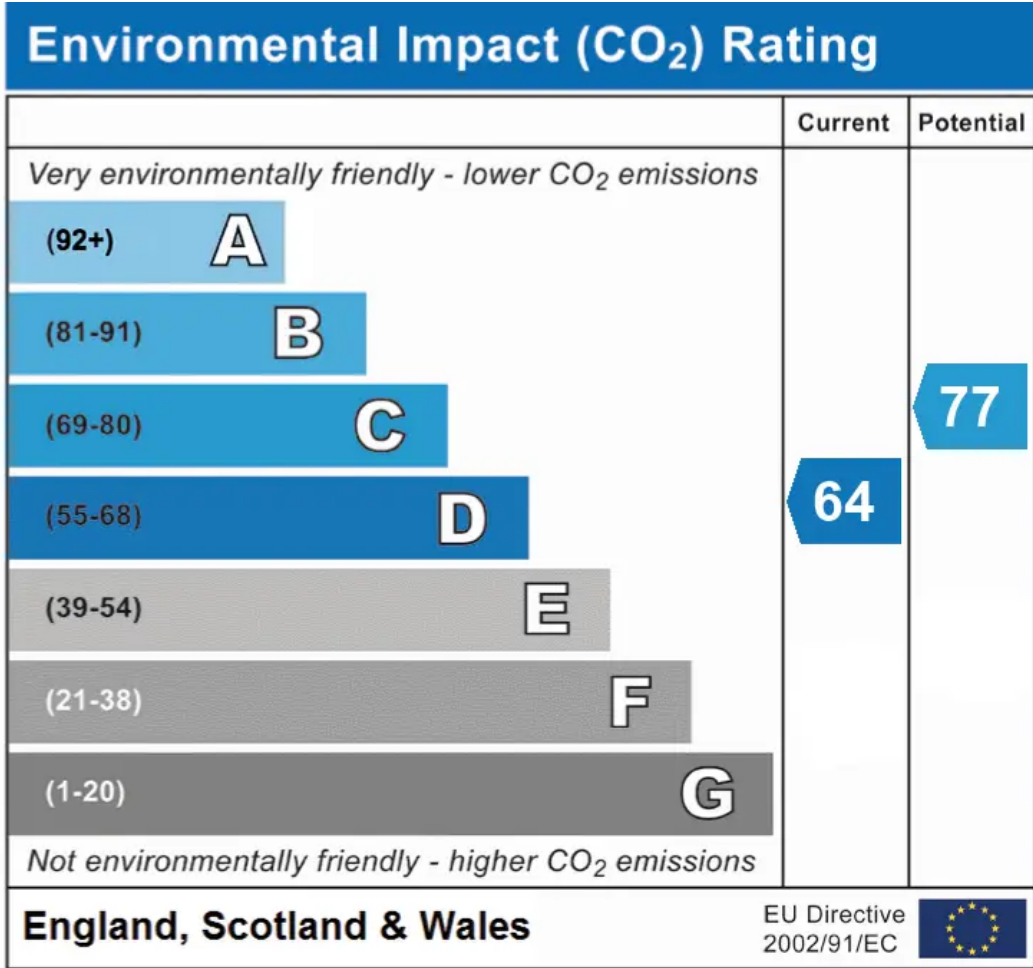
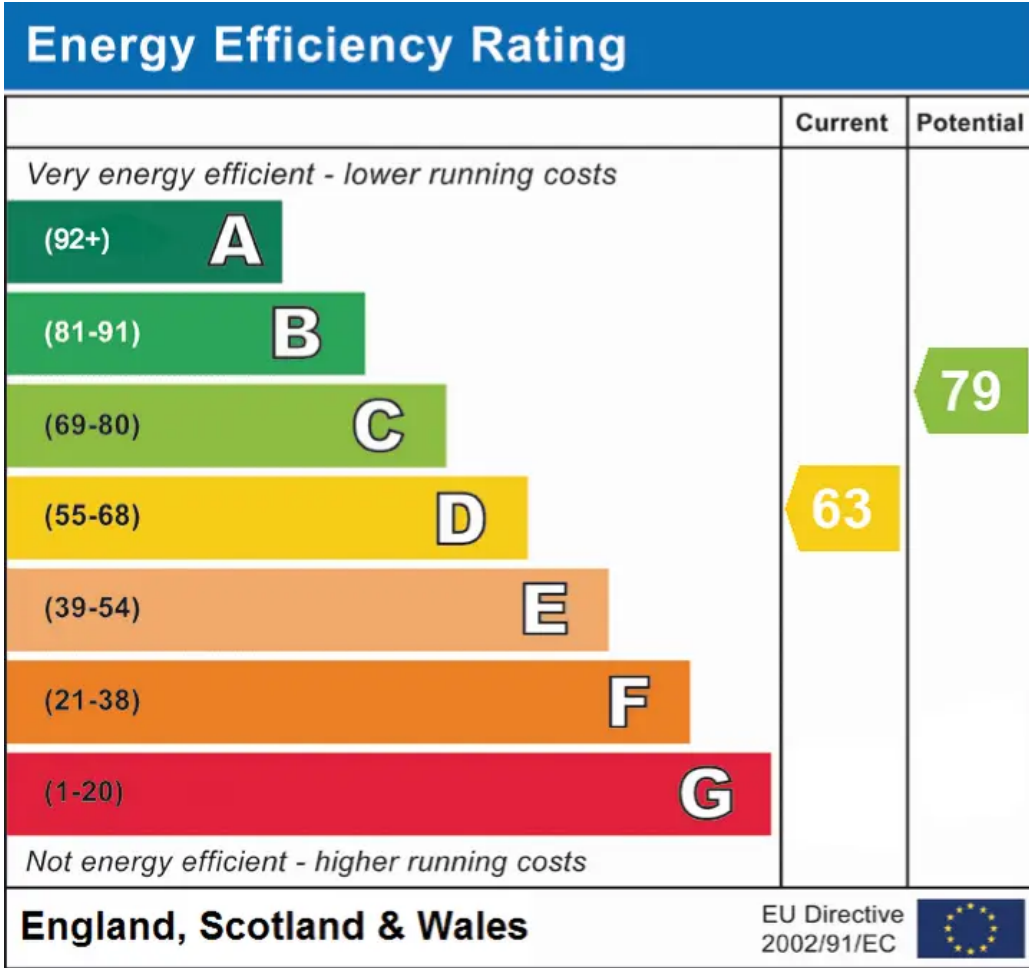
44.87 m²

(1) Excluding balconies and terraces

While every attempt has been made to ensure accuracy, all measurements are approximate, not to scale. This floor plan is for illustrative purposes only.

Calculations are based on RICS IPMS 3C standard.

GIRAFFE360



Chinneck Shaw

Bridge House, Milton Road, Portsmouth – PO3 6AN

023 9282 6731

hello@chinneckshaw.co.uk

www.chinneckshaw.co.uk/

Chinneck Shaw, Bridge House, Milton Road, PO3 6AN Consumer Protection from Unfair Trading Regulations 2008: These details are for guidance only and complete accuracy cannot be guaranteed. If there is any point which is of particular importance, verification should be obtained. The do not constitute a contract or part of a contract. All measurements are approximate. No guarantee can be given with regard to planning permissions or fitness for purpose. No apparatus, equipment, fixture or fitting has been tested. Items shown in the photographs are NOT necessarily included. Interested Parties are advised to check availability and make an appointment to view before travelling to see a property.