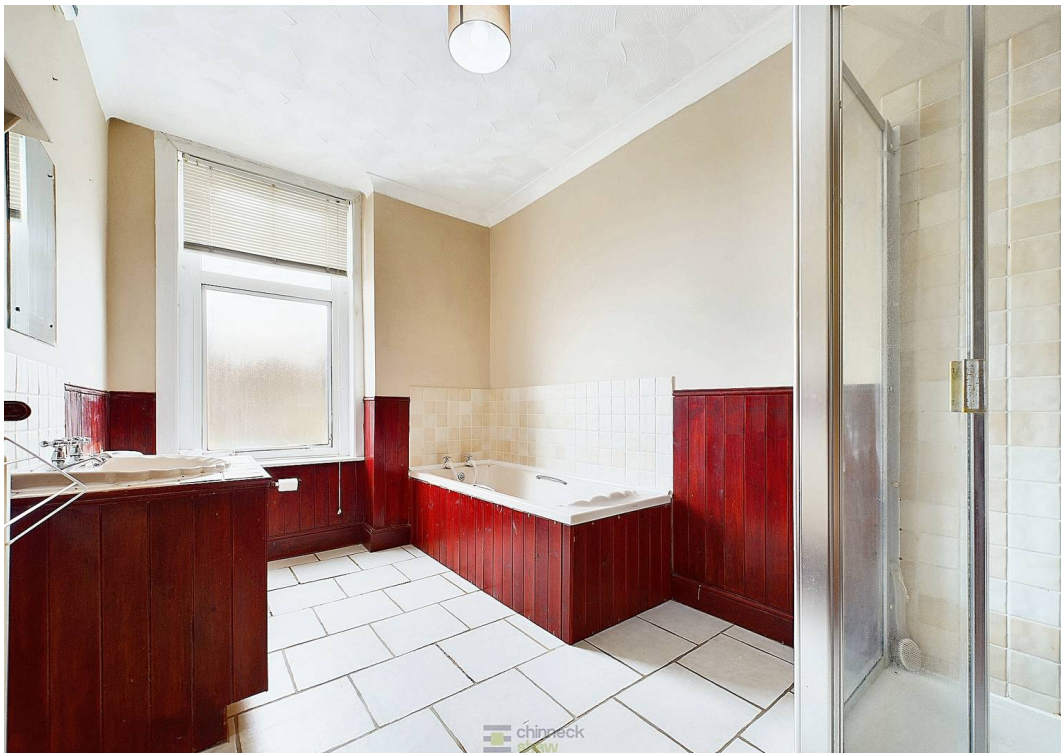
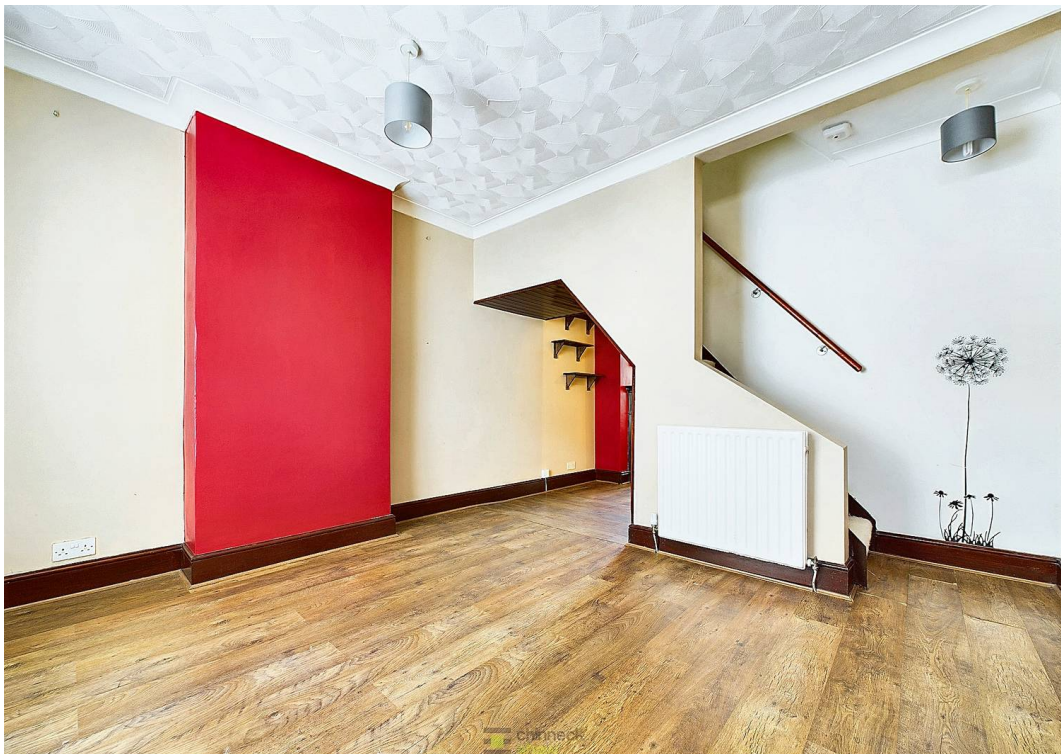




166 Newcome Road, 166  
Portsmouth

Offers in Region of £215,000

 chinneckshaw



# 166 Newcome Road

166, Portsmouth

Welcome to this delightful two-bedroom mid-terraced home located on the ever-popular Newcome Road in Portsmouth. Upon entering, you are greeted by a spacious living room at the front of the property. This area is bathed in natural light from a large window at the front plus another in the second reception which benefits from it's sunny south-facing aspect. The open-plan design seamlessly connects the living room to the second reception area, creating a versatile and inviting space.

Beyond the reception areas, you will find a well-appointed kitchen with ample wall and base cabinets and generous countertop space. A stainless steel sink sits beneath the window, with plumbing for a washing machine conveniently located below. The kitchen also offers side access to the garden, providing easy outdoor connectivity. At the rear of the property is a handy space housing a downstairs toilet.

Upstairs, there are two equally sized, neutrally decorated bedrooms. The front bedroom benefits from built-in storage and a large window, ensuring the room is bright and airy. The second bedroom, situated at the rear of the home, provides access to the spacious bathroom. This well-equipped bathroom features a bath, separate shower cubicle, toilet, and sink with storage underneath.

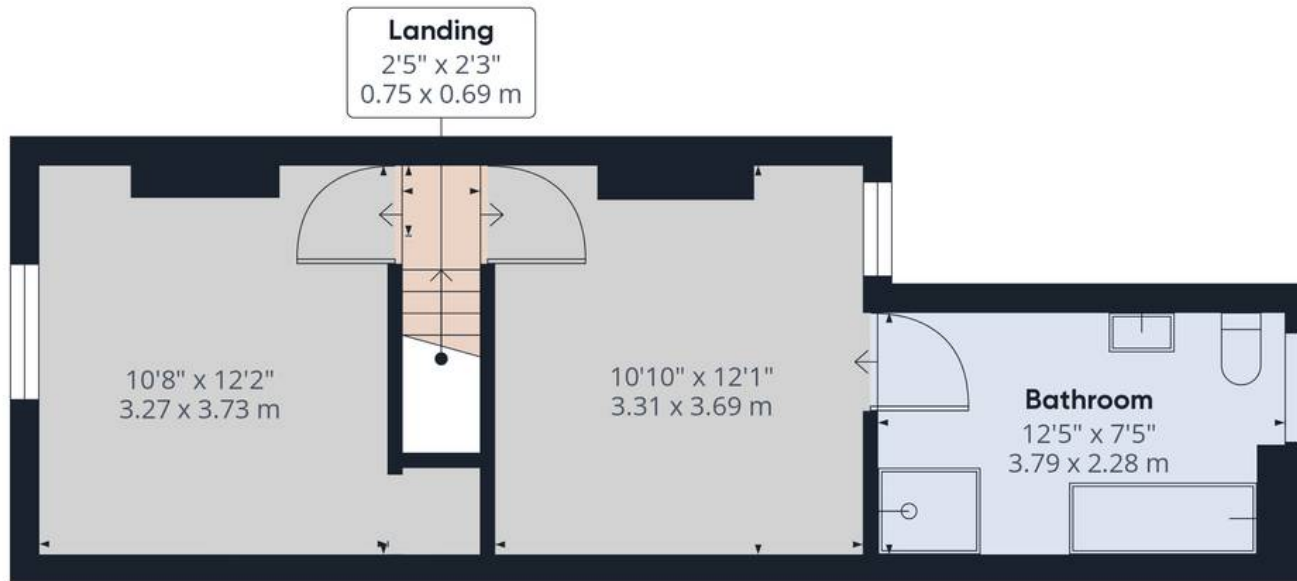
The rear garden, enclosed by brick walls, enjoys a sunny south-facing aspect and offers a blank canvas for you to create your ideal outdoor retreat.

This charming home combines comfort, practicality, and potential, making it an excellent choice for first-time buyers or those looking to invest in a well-





Ground Floor



Floor 1

Approximate total area<sup>(1)</sup>

801.8 ft<sup>2</sup>

74.49 m<sup>2</sup>

(1) Excluding balconies and terraces

While every attempt has been made to ensure accuracy, all measurements are approximate, not to scale. This floor plan is for illustrative purposes only.

GIRAFFE 360



## Chinneck Shaw

Bridge House, Milton Road, Portsmouth – PO3 6AN

023 9282 6731

[hello@chinneckshaw.co.uk](mailto:hello@chinneckshaw.co.uk)

[www.chinneckshaw.co.uk/](http://www.chinneckshaw.co.uk/)

Chinneck Shaw, Bridge House, Milton Road, PO3 6AN Consumer Protection from Unfair Trading Regulations 2008: These details are for guidance only and complete accuracy cannot be guaranteed. If there is any point which is of particular importance, verification should be obtained. The do not constitute a contract or part of a contract. All measurements are approximate. No guarantee can be given with regard to planning permissions or fitness for purpose. No apparatus, equipment, fixture or fitting has been tested. Items shown in the photographs are NOT necessarily included. Interested Parties are advised to check availability and make an appointment to view before travelling to see a property.