



**25 Milton Road, Baffins**  
Portsmouth

Offers in Region of **£165,000**

 **chinneckshaw**







## 25 Milton Road

### Baffins

We are delighted to offer this two bedroom first floor flat which we think would be perfect for those first time buyers among you! This property has been cared for by its current owners and offers a great opportunity for prospective buyers.

Upon entering, you'll find yourself in a welcoming hallway leading up to the first floor. Here, the central landing area leads to various rooms first of which is the Lounge. We love this room which is light and spacious and benefits from having a large bay window to the front aspect. Next comes the Kitchen which is fitted with a range of wall and base cabinets plus plenty of worktop and storage space.

There are two bedrooms here, both good sizes and located at the rear of the property. Like the rest of this lovely home, they are tastefully decorated and ready to move straight into! The bathroom is a modern suite with shower over.

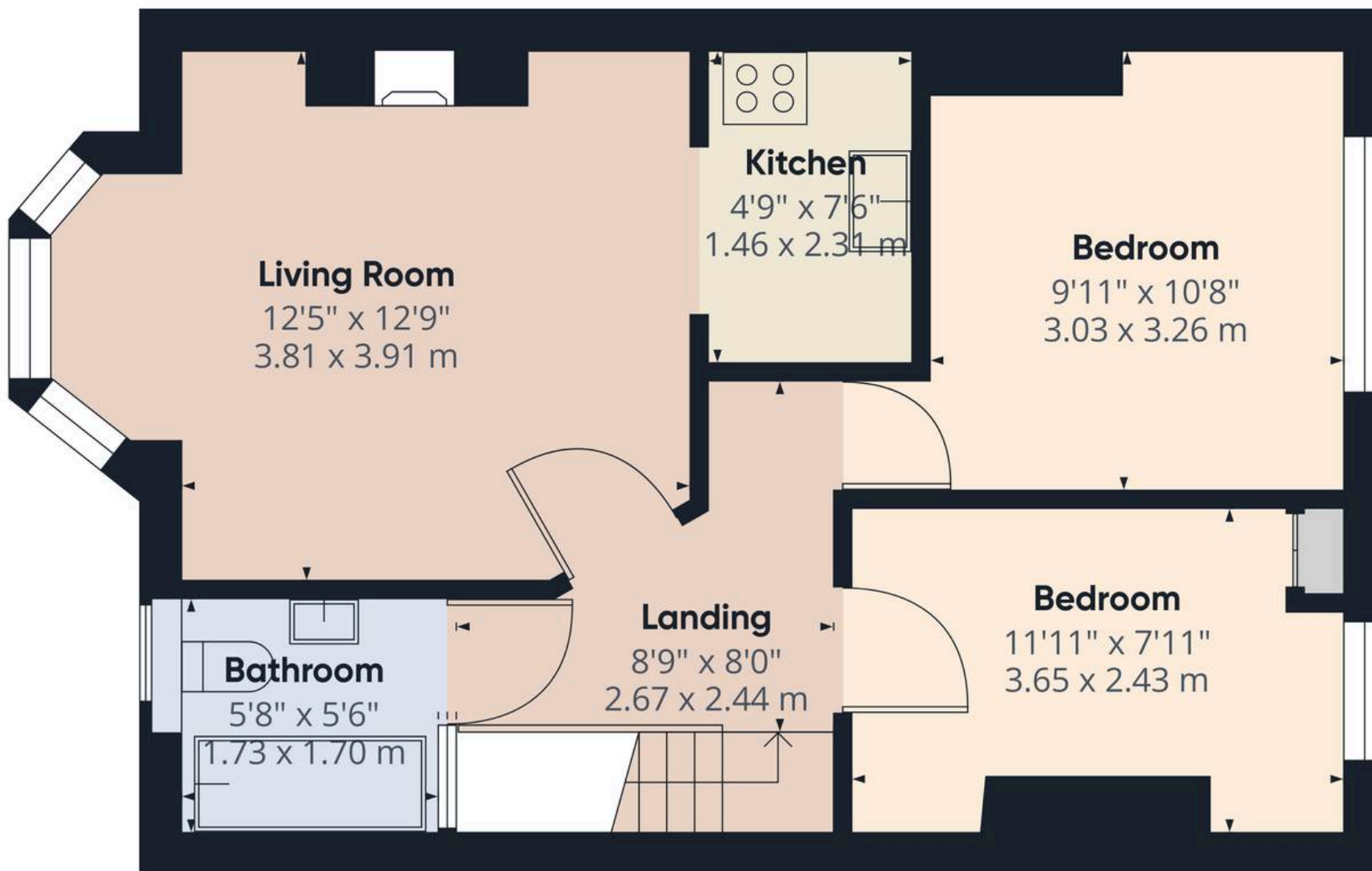
All in all, we think this would make someone a lovely home and with various amenities locally including local shops, parks and of course the beautiful Baffins pond nearby, don't miss the opportunity to make this your new home or investment. Contact us today to arrange a viewing.

Tenure - Leasehold with approximately 78 years remaining. For Ground rent and any service charges please contact the agent.

Tenure: Leasehold







Approximate total area<sup>(1)</sup>

475.55 ft<sup>2</sup>

44.18 m<sup>2</sup>

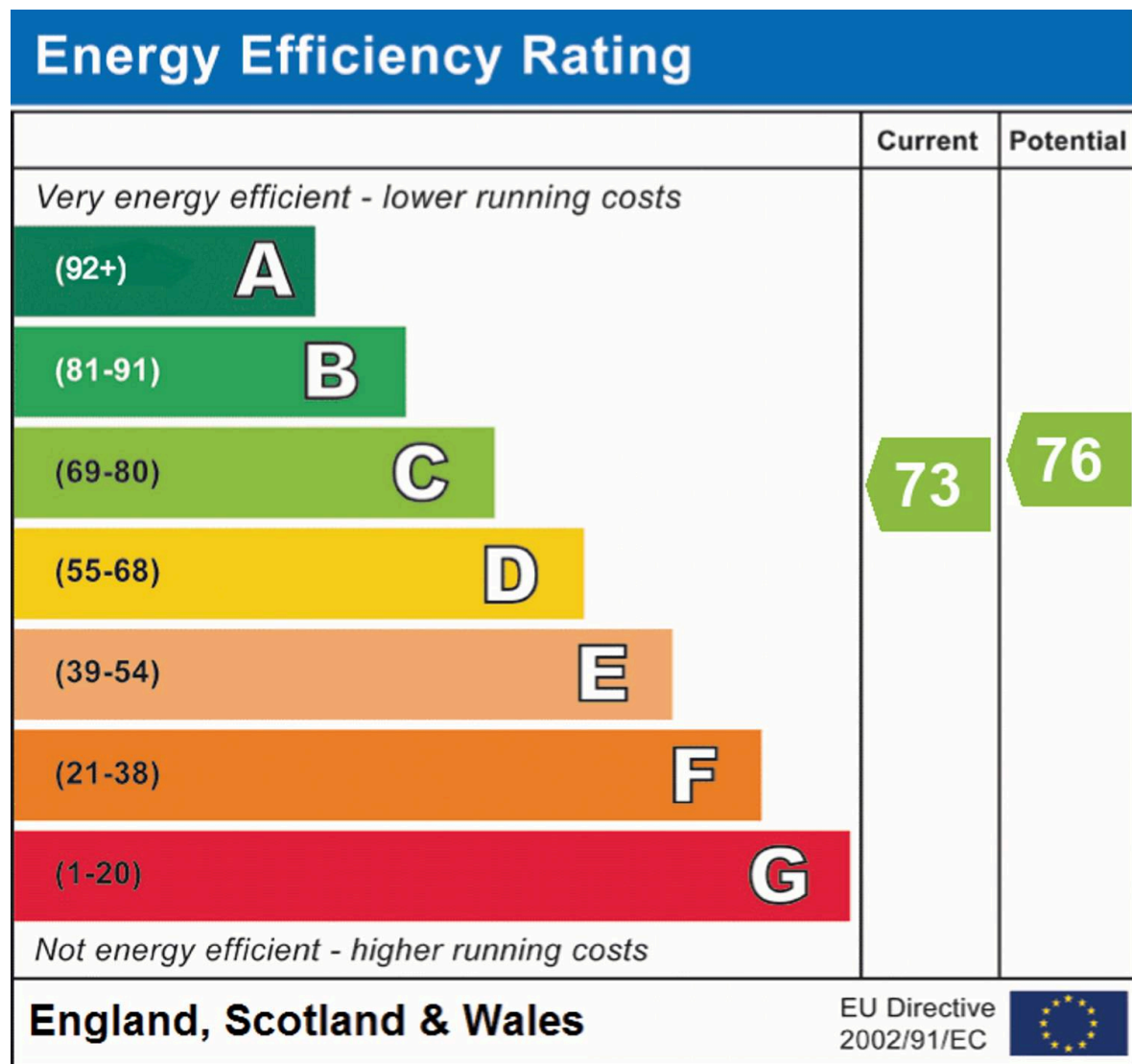
(1) Excluding balconies and terraces

While every attempt has been made to ensure accuracy, all measurements are approximate, not to scale. This floor plan is for illustrative purposes only.

Calculations are based on RICS IPMS 3C standard.

GIRAFFE360





## Chinneck Shaw

Bridge House, Milton Road, Portsmouth – PO3 6AN

023 9282 6731

hello@chinneckshaw.co.uk

www.chinneckshaw.co.uk/

Chinneck Shaw, Bridge House, Milton Road, PO3 6AN Consumer Protection from Unfair Trading Regulations 2008: These details are for guidance only and complete accuracy cannot be guaranteed. If there is any point which is of particular importance, verification should be obtained. The do not constitute a contract or part of a contract. All measurements are approximate. No guarantee can be given with regard to planning permissions or fitness for purpose. No apparatus, equipment, fixture or fitting has been tested. Items shown in the photographs are NOT necessarily included. Interested Parties are advised to check availability and make an appointment to view before travelling to see a property.