



59 Westover Road, Portsmouth
Portsmouth

Offers in Region of **£259,995**

 **chinneckshaw**



59 Westover Road

Portsmouth, Portsmouth

Nestled on Westover Road, just a short walk from the serene Baffins Pond, this delightful three-bedroom mid-terraced home is perfect for first-time buyers, downsizers, and investors alike.

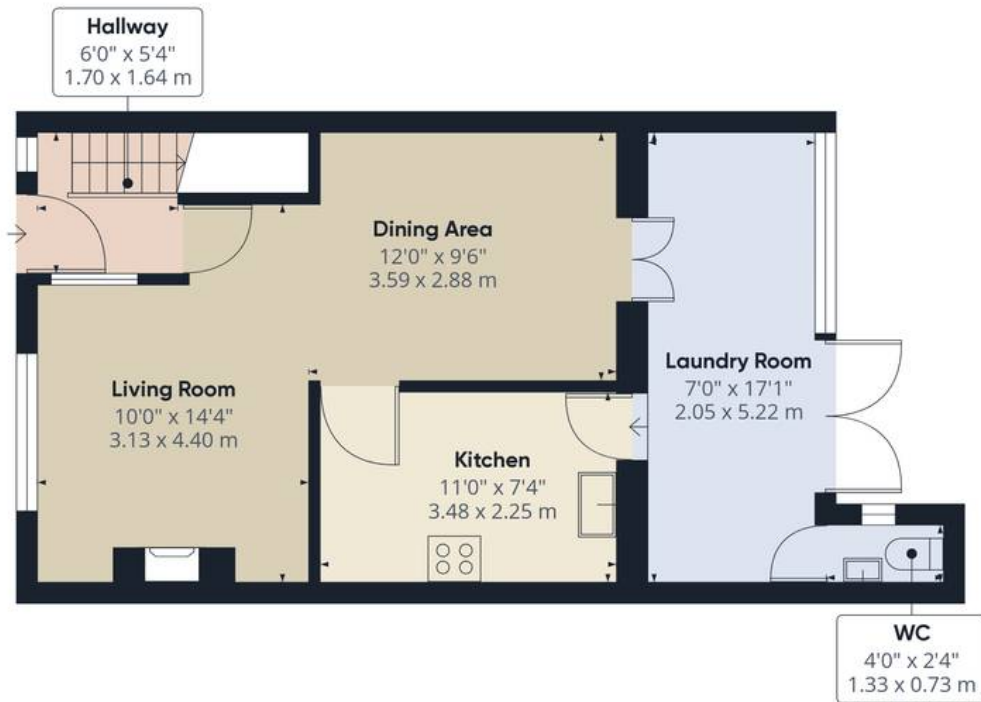
Upon entering, you are greeted by a welcoming hallway that provides access to both the ground floor living spaces and the first floor. The ground floor boasts an open-plan living and dining area, thoughtfully modernised to create a seamless flow between the front and rear of the home. This bright and airy space benefits from double-glazed patio doors that open into a lean-to conservatory.

Adjacent to the dining area is a well-equipped kitchen featuring ample worktop space and plenty of storage. The lean-to conservatory houses a convenient utility space with provisions for a washing machine and tumble dryer. Additionally, the current owners have enhanced the home with a stylish downstairs toilet, finished to the same standard as the family bathroom upstairs. The remainder of the conservatory is currently used as a play area with easy access to the garden, which features a patio, artificial grass, and a lovely seating area at the rear.

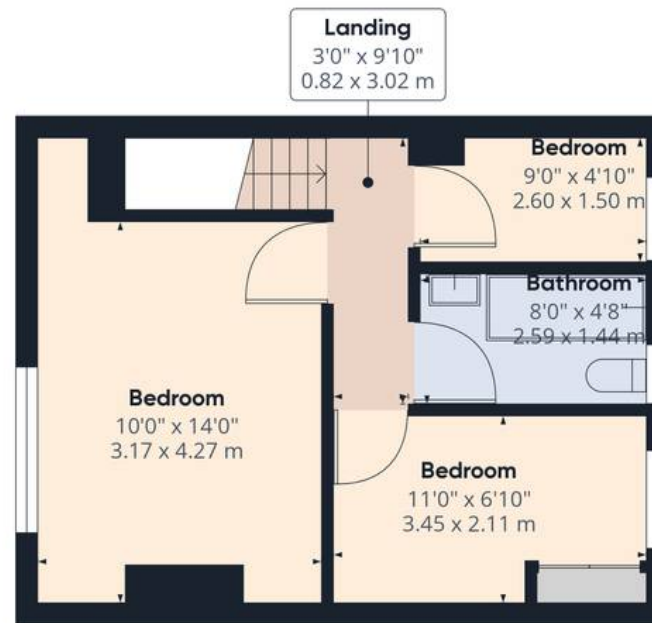
Upstairs, the master bedroom spans the width of the home, offering ample space for new owners to personalise. Across the landing, the family bathroom boasts a white suite with a tiled surround. The second bedroom overlooks the garden, while the third bedroom, also at the rear of the home, is perfect for a nursery or home office.

With its modernised interiors, charming garden, and prime location, this home is an excellent opportunity for those looking to settle in the sought-after Baffins





Ground Floor



Floor 1

Approximate total area⁽¹⁾

839.8 ft²

78.02 m²

(1) Excluding balconies and terraces

While every attempt has been made to ensure accuracy, all measurements are approximate, not to scale. This floor plan is for illustrative purposes only.

GIRAFFE360



Chinneck Shaw

Bridge House, Milton Road, Portsmouth – PO3 6AN

023 9282 6731

hello@chinneckshaw.co.uk

www.chinneckshaw.co.uk/

Chinneck Shaw, Bridge House, Milton Road, PO3 6AN Consumer Protection from Unfair Trading Regulations 2008: These details are for guidance only and complete accuracy cannot be guaranteed. If there is any point which is of particular importance, verification should be obtained. The do not constitute a contract or part of a contract. All measurements are approximate. No guarantee can be given with regard to planning permissions or fitness for purpose. No apparatus, equipment, fixture or fitting has been tested. Items shown in the photographs are NOT necessarily included. Interested Parties are advised to check availability and make an appointment to view before travelling to see a property.