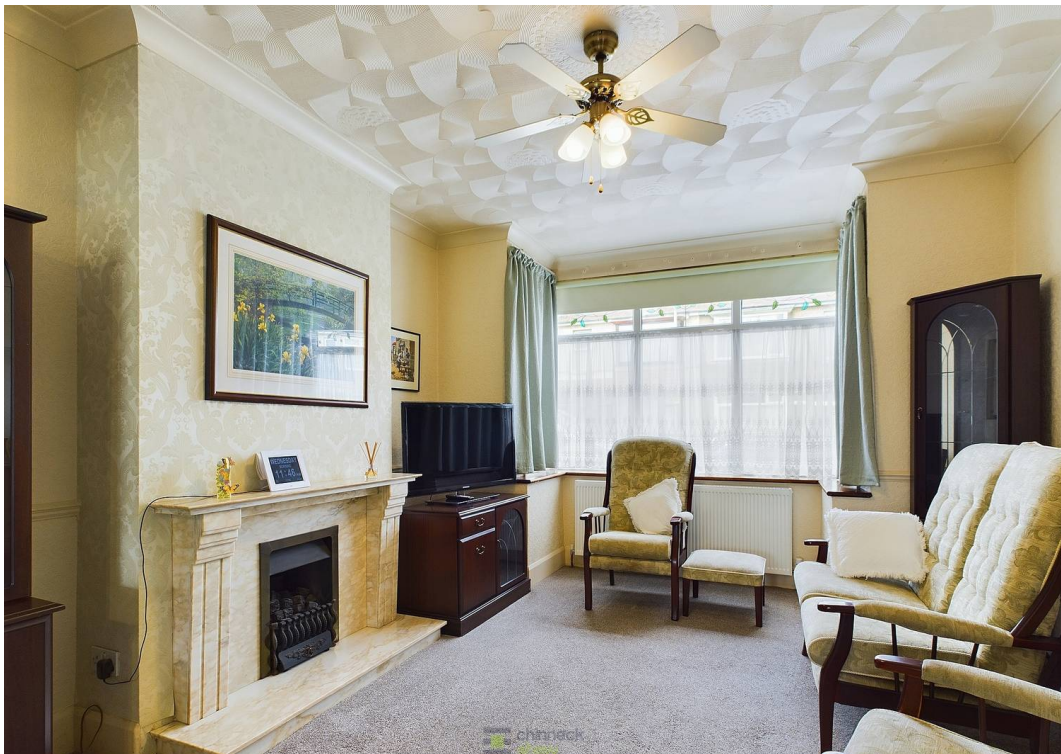




20 Sidmouth Avenue, Portsmouth
Portsmouth

Offers in Region of £330,000

 chinneckshaw



20 Sidmouth Avenue

Portsmouth, Portsmouth

This delightful 3-bedroom semi-detached home on Sidmouth Avenue, Baffins, Portsmouth, has been lovingly maintained and is perfect for a growing family.

As you enter, you are welcomed by a bright hallway featuring elegant wooden flooring. This hallway provides access to the first floor and the ground floor living space. At the end of the hallway, you'll find a convenient tiled downstairs WC located under the stairs.

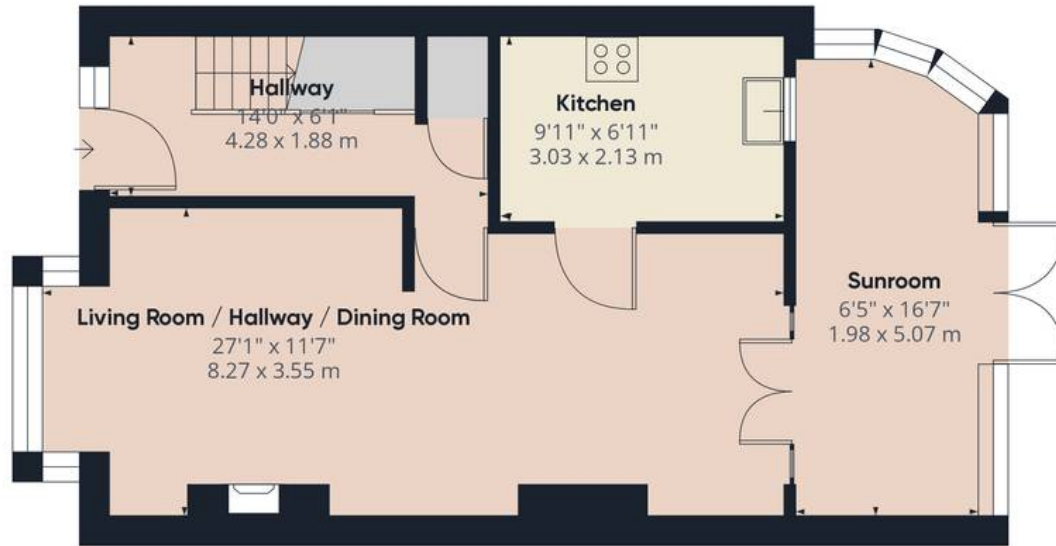
The large open-plan living/dining area is a highlight of the home, featuring a bay window at the front and double doors at the rear, leading to a lean-to conservatory. Adjacent to the dining area, at the rear of the home, is a well-equipped kitchen with ample storage and worktop space. The kitchen has space for a dishwasher, fridge freezer, and built-in oven.

The conservatory at the rear offers lovely access to the garden, which is laid to lawn with flower borders and a block-paved driveway leading to a single garage.

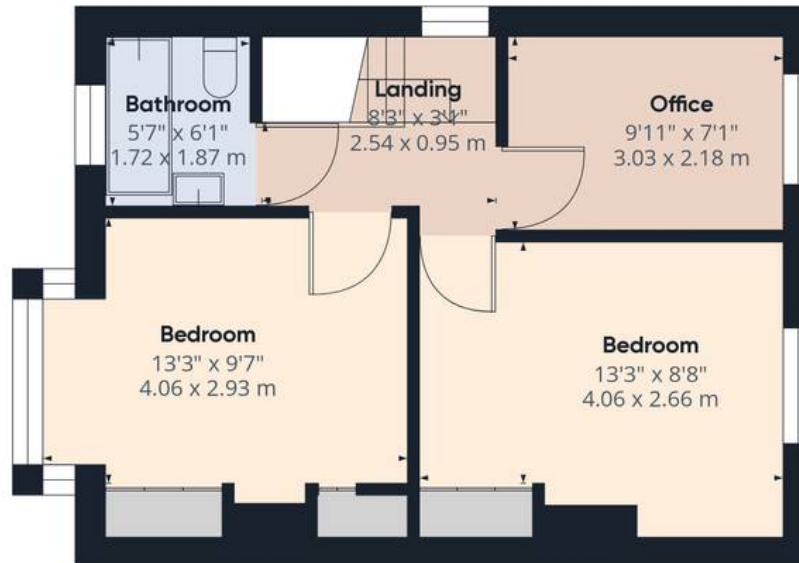
Upstairs, you will find three generously sized bedrooms. The smaller of the three bedrooms is located at the rear, overlooking the garden. Adjacent is the second bedroom, featuring built-in storage on either side of the chimney breast. The family bathroom, located at the front off the landing, is tastefully tiled with neutral tones and includes a P-shaped bath, white suite, and a frosted double-glazed window.

The principal bedroom, also at the front, benefits from a square bay window and plenty of built-in storage.





Ground Floor



Floor 1

Approximate total area⁽¹⁾

977.52 ft²

90.81 m²

(1) Excluding balconies and terraces

While every attempt has been made to ensure accuracy, all measurements are approximate, not to scale. This floor plan is for illustrative purposes only.

GIRAFFE360



Chinneck Shaw

Bridge House, Milton Road, Portsmouth – PO3 6AN

023 9282 6731

hello@chinneckshaw.co.uk

www.chinneckshaw.co.uk/

Chinneck Shaw, Bridge House, Milton Road, PO3 6AN Consumer Protection from Unfair Trading Regulations 2008: These details are for guidance only and complete accuracy cannot be guaranteed. If there is any point which is of particular importance, verification should be obtained. The do not constitute a contract or part of a contract. All measurements are approximate. No guarantee can be given with regard to planning permissions or fitness for purpose. No apparatus, equipment, fixture or fitting has been tested. Items shown in the photographs are NOT necessarily included. Interested Parties are advised to check availability and make an appointment to view before travelling to see a property.