

Great Cambridge Road, Cheshunt

£550,000 Freehold

3 Bedrooms • Extended • Open-Planned Kitchen/Diner • Large West Facing Garden • Ample Off-Street Parking • 4-Piece Bathroom & Separate Shower Room • Well Presented



Accommodation Comprises:

Entrance Hall

Lounge

14' 5" x 10' 6" (4.39m x 3.20m)

Kitchen

17' 11" x 17' 2" (5.46m x 5.23m)

Conservatory

15' 3" x 14' 9" (4.65m x 4.50m)

Study

9' 3" x 8' 10" (2.82m x 2.69m)

Utility Room

7' 7" x 5' 10" (2.31m x 1.78m)

Shower Room

Bedroom One

13' 11" x 8' 5" (4.24m x 2.57m)

Bedroom Two

11' 1" x 9' 2" (3.38m x 2.79m)

Bedroom Three

10' 10" x 8' 3" (3.30m x 2.51m)

Bathroom



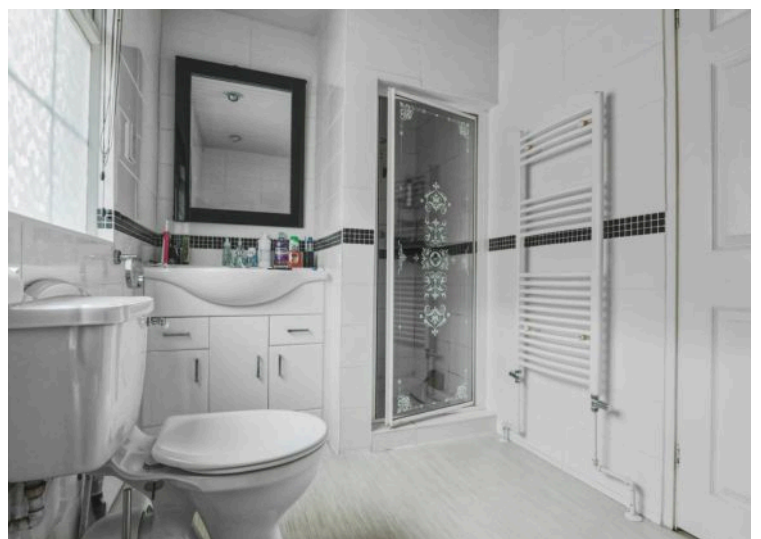
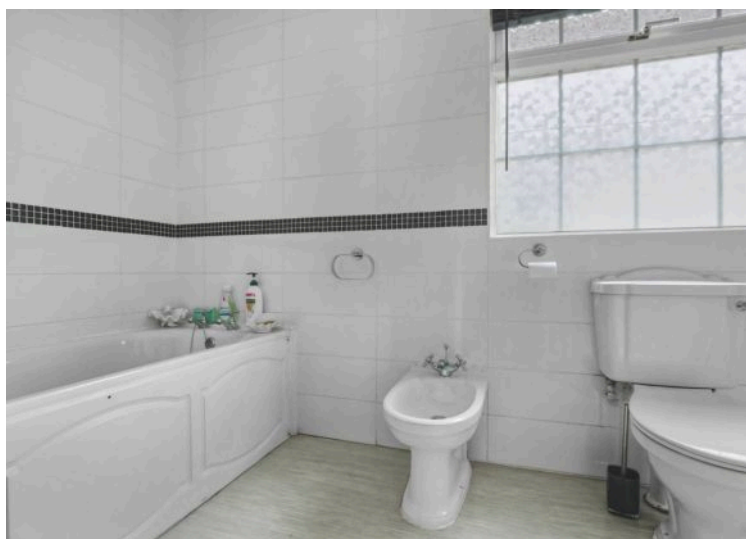
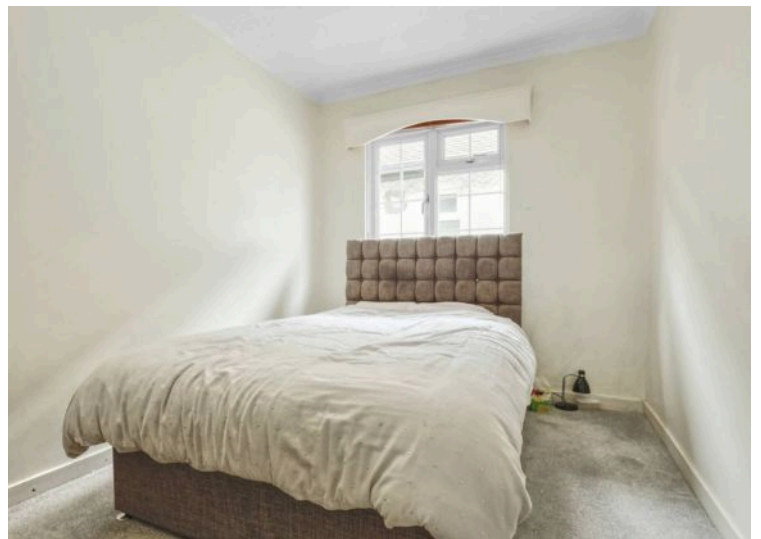


Council Tax band: E

Tenure: Freehold

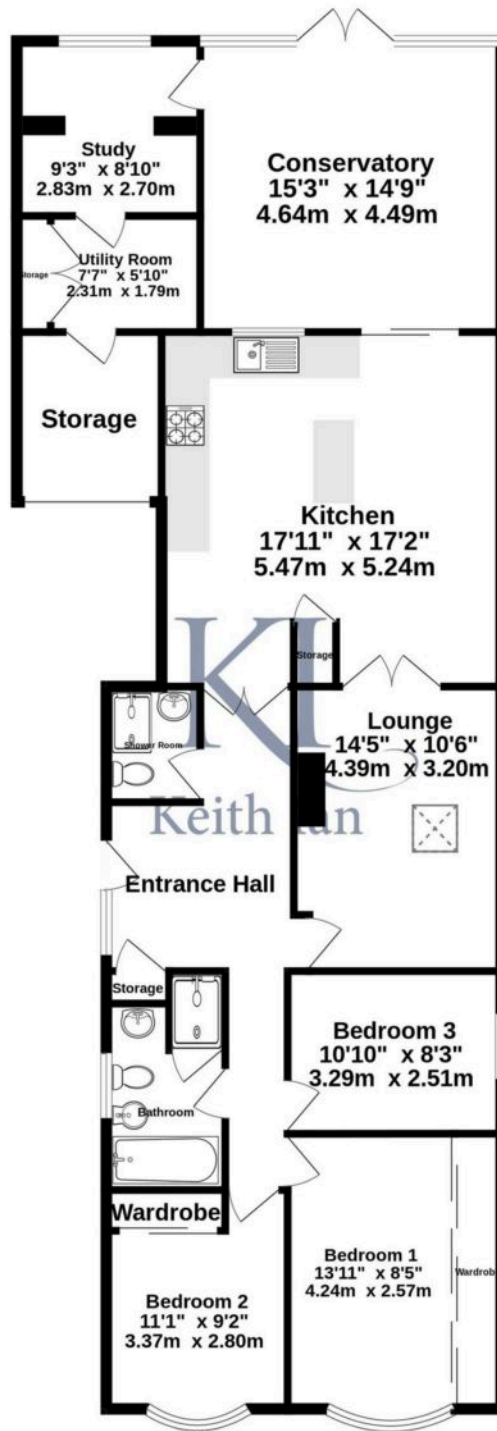
EPC Energy Efficiency Rating: D

EPC Environmental Impact Rating:





Ground Floor
1463 sq.ft. (135.9 sq.m.) approx.



TOTAL FLOOR AREA : 1463 sq.ft. (135.9 sq.m.) approx.

Whilst every attempt has been made to ensure the accuracy of the floorplan contained here, measurements of doors, windows, rooms and any other items are approximate and no responsibility is taken for any error, omission or mis-statement. This plan is for illustrative purposes only and should be used as such by any prospective purchaser. The services, systems and appliances shown have not been tested and no guarantee as to their operability or efficiency can be given.

Made with Metropix ©2025