



32 Westmill Road, Ware

£450,000 Freehold

Off Street Parking • Bungalow • Chain Free • Generous Plot • Detached • Needs Modernisation • Great Potential



Entrance Hall

Lounge Diner

Kitchen

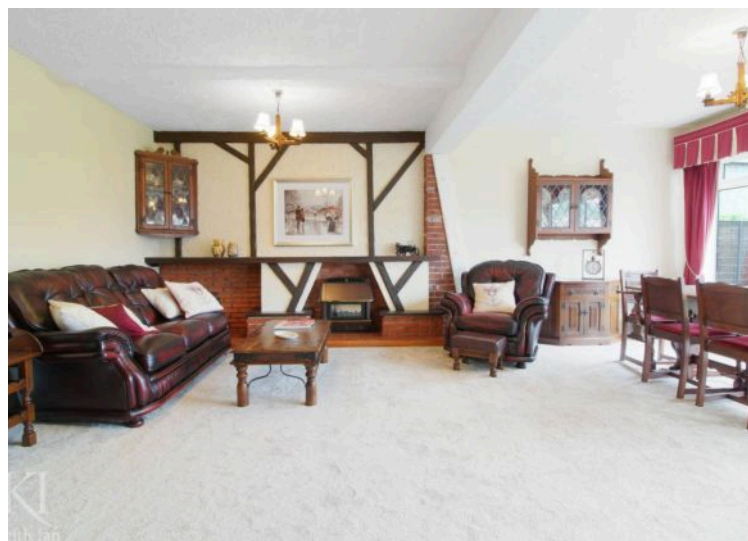
Bedroom One

Bedroom Two

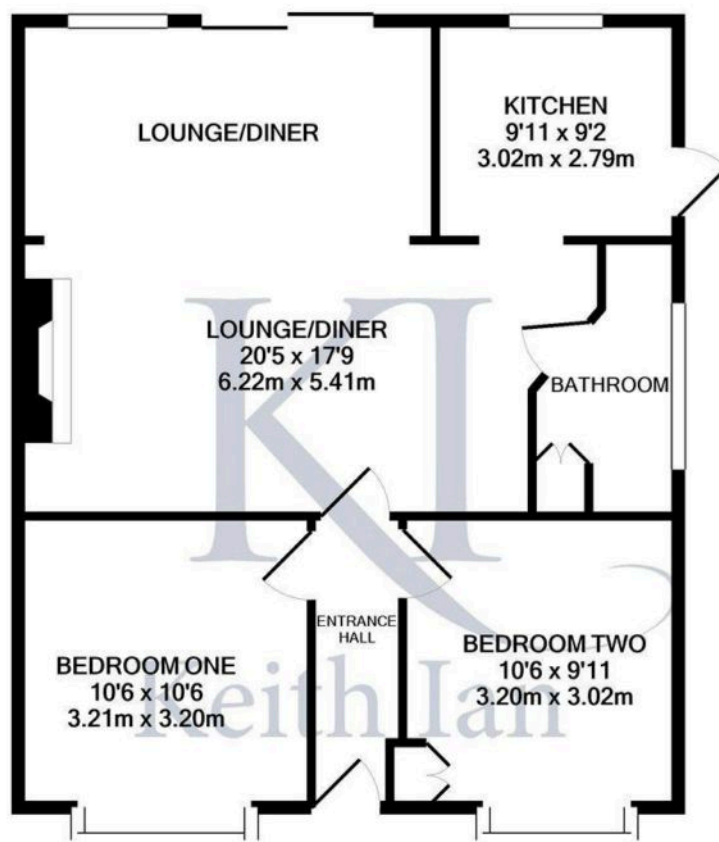
Bathroom

Garden









TOTAL APPROX. FLOOR AREA 683 SQ.FT. (63.5 SQ.M.)

Whilst every attempt has been made to ensure the accuracy of the floor plan contained here, measurements of doors, windows, rooms and any other items are approximate and no responsibility is taken for any error, omission, or mis-statement. This plan is for illustrative purposes only and should be used as such by any prospective purchaser. The services, systems and appliances shown have not been tested and no guarantee as to their operability or efficiency can be given

Made with Metropix ©2022