



£400,000

Grove Road, Ware

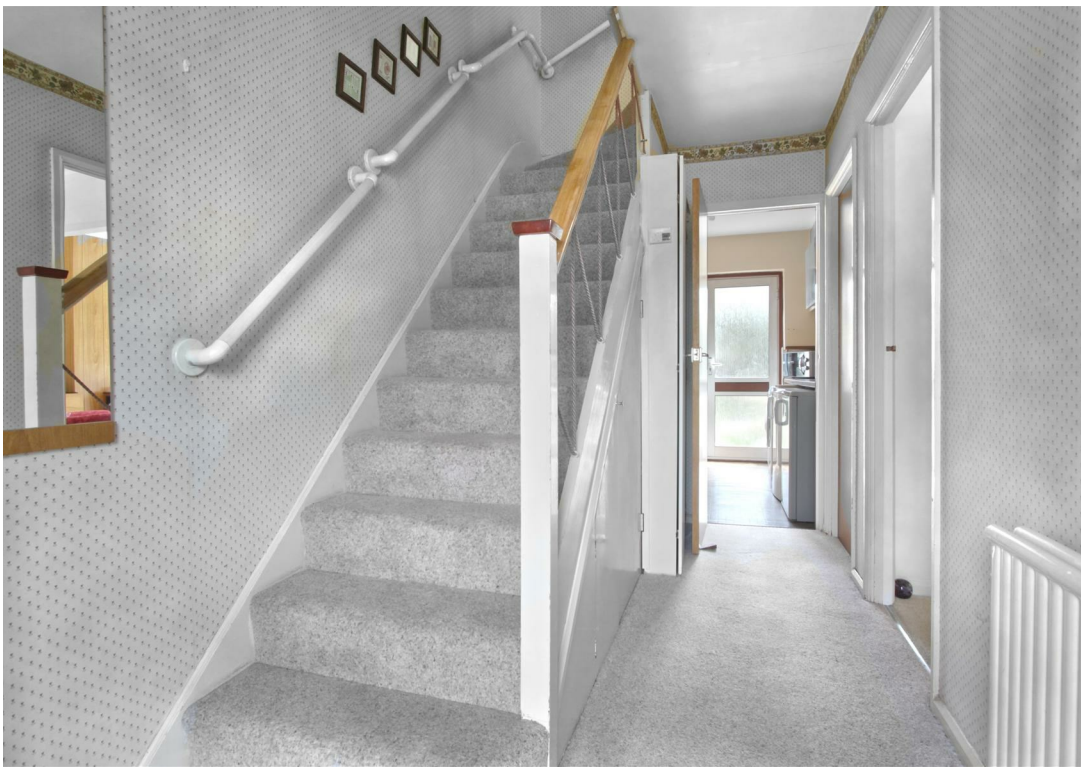


Grove Road, Ware, SG12 7HS

Keith Ian are pleased to offer for sale this well presented 3 bedroom terraced property situated within a pleasant residential area in Ware town. The property offers 2 good sized reception rooms and a kitchen with access to the rear garden on the ground floor. On the first floor there are 3 well proportioned bedrooms and a re-fitted shower room with separate WC. The property benefits from double glazing, gas central heating and a well manicured rear garden plus garage to the rear. The property has plenty of scope for rear and loft extensions STPP and potential for a driveway, again STPP. This property is offered CHAIN FREE so a quick move available.

Ware is a charming town in Hertfordshire. Living near Ware's bustling High Street provides residents with a wealth of benefits. Here, you'll find a delightful mix of independent shops, boutiques, and local businesses, offering a unique shopping experience. From quaint cafes and cosy pubs to restaurants serving a variety of cuisines, the High Street is a haven for food enthusiasts. The vibrant market, held regularly, showcases local produce and artisanal goods. Additionally, the High Street hosts community events, festivals, and cultural celebrations throughout the year, fostering a strong sense of community spirit. Ware mainline Station is only a few moments away with trains into London.

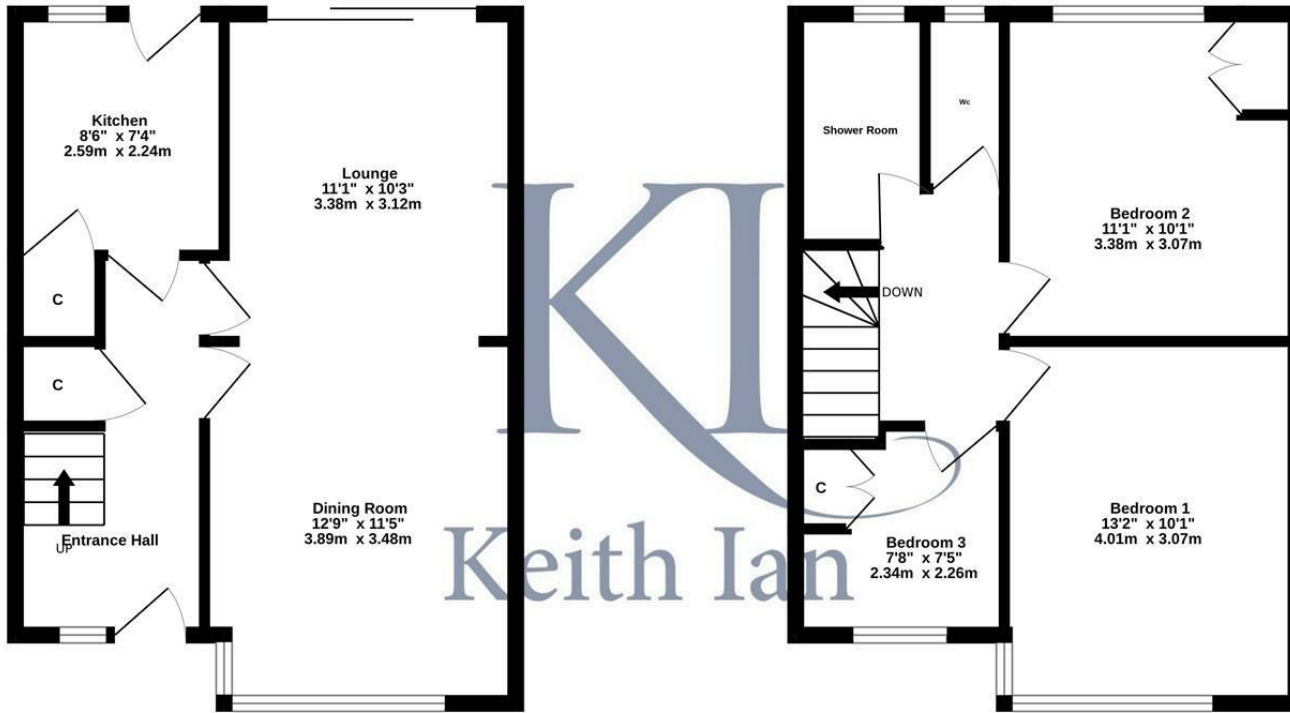






Ground Floor
408 sq.ft. (37.9 sq.m.) approx.

1st Floor
408 sq.ft. (37.9 sq.m.) approx.



TOTAL FLOOR AREA : 816 sq.ft. (75.8 sq.m.) approx.

Whilst every attempt has been made to ensure the accuracy of the floorplan contained here, measurements of doors, windows, rooms and any other items are approximate and no responsibility is taken for any error, omission or mis-statement. This plan is for illustrative purposes only and should be used as such by any prospective purchaser. The services, systems and appliances shown have not been tested and no guarantee as to their operability or efficiency can be given.
Made with Metropix ©2024

These particulars are believed to be correct but their accuracy is not guaranteed and they do not form part of any contract. Whilst every effort is made to ensure the accuracy of these details, it should be noted that the above measurements are approximate only. Any internal photographs are intended as a guide only and it should not be assumed that any of the furniture/fitments are included in any sale. Where shown, details of lease, ground rent and service charge are provided by the vendor and their accuracy cannot be guaranteed, as the information may not have been verified and further checks should be made either through your solicitor. Where appliances, including central heating, are mentioned, it cannot be assumed that they are in working order, as they have not been tested. Please also note that wiring, plumbing and drains have not been checked.



Energy Efficiency Rating		Current	Potential
Very energy efficient - lower running costs			
(92 plus) A			89
(81-91) B			
(69-80) C		71	
(55-68) D			
(39-54) E			
(21-38) F			
(1-20) G			
Not energy efficient - higher running costs			
England & Wales		EU Directive 2002/91/EC	

Environmental Impact (CO ₂) Rating		Current	Potential
Very environmentally friendly - lower CO ₂ emissions			
(92 plus) A			
(81-91) B			
(69-80) C			
(55-68) D			
(39-54) E			
(21-38) F			
(1-20) G			
Not environmentally friendly - higher CO ₂ emissions			
England & Wales		EU Directive 2002/91/EC	

T: 01920 463131
ware@keithian.com
www.keithian.com



Offices at Cheshunt Ware and Buntingford
Managing Director Ian F. Robertson
Keith Ian Ltd trading as Keith Ian Partnership. Registered in England. No. 4700202