

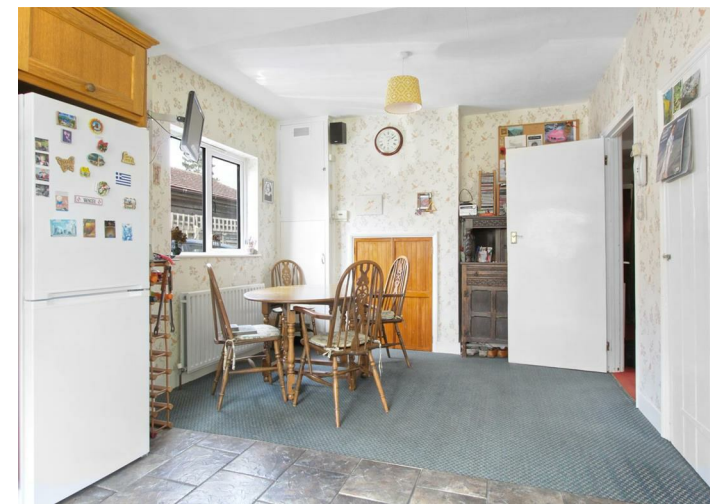


£750,000

Westmill Road, Ware

KI





### **Westmill Road, Ware, SG12 0EW**

*Keith Ian are pleased to offer this rarely available, three bedroom detached house. Boasting a generous plot with plenty of opportunity to extend (STPP). This property offers versatile living accommodation with 3 reception rooms, a large kitchen breakfast room and a downstairs WC. Upstairs there are 3 well proportioned bedrooms and a family bathroom. The property has a huge garden with a paved patio area and access to the garage. Call now for viewings*

*Ware, a charming town in Hertfordshire, offers an exceptional living experience with its proximity to the High Street. Living near Ware's bustling High Street provides residents with a wealth of benefits. Here, you'll find a delightful mix of independent shops, boutiques, and local businesses, offering a unique shopping experience. From quaint cafes and cozy pubs to restaurants serving a variety of cuisines, the High Street is a haven for food enthusiasts. The vibrant market, held regularly, showcases local produce and artisanal goods. Additionally, the High Street hosts community events, festivals, and cultural celebrations throughout the year, fostering a strong sense of community spirit. Living near Ware's High Street ensures convenience, a vibrant social scene, and a charming ambiance right at your doorstep.*











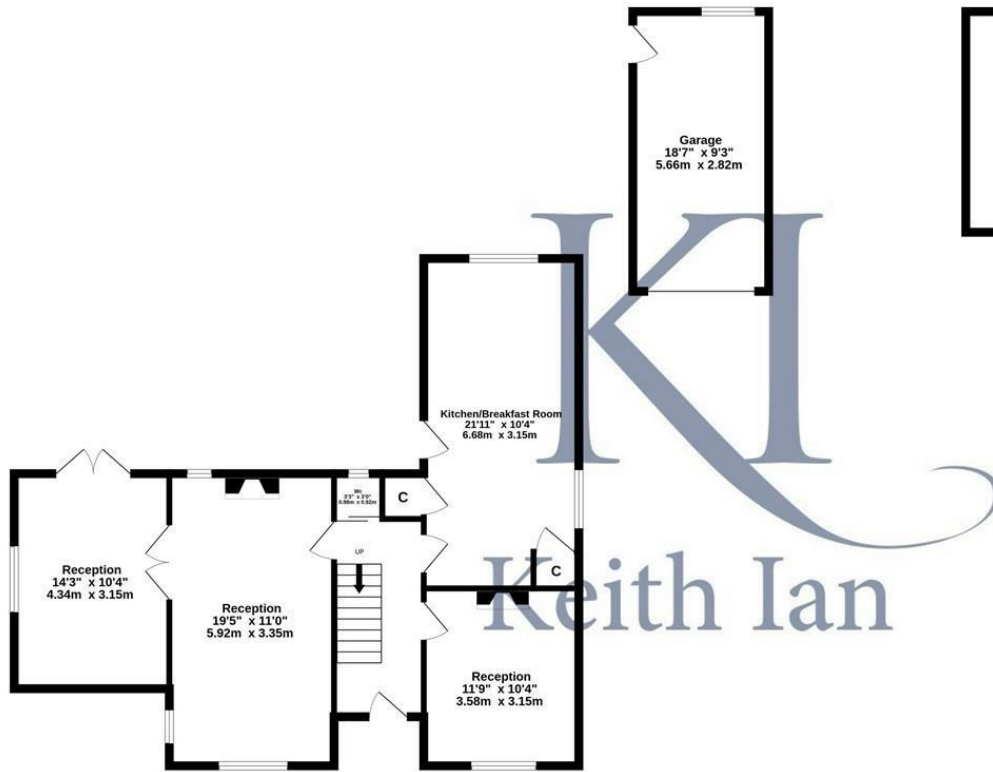




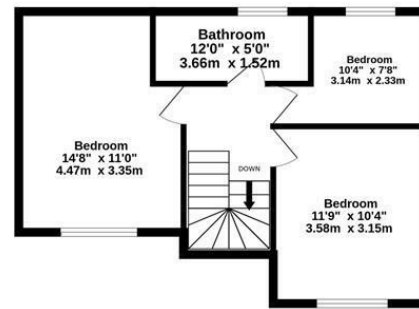




Ground Floor  
963 sq.ft. (89.4 sq.m.) approx.



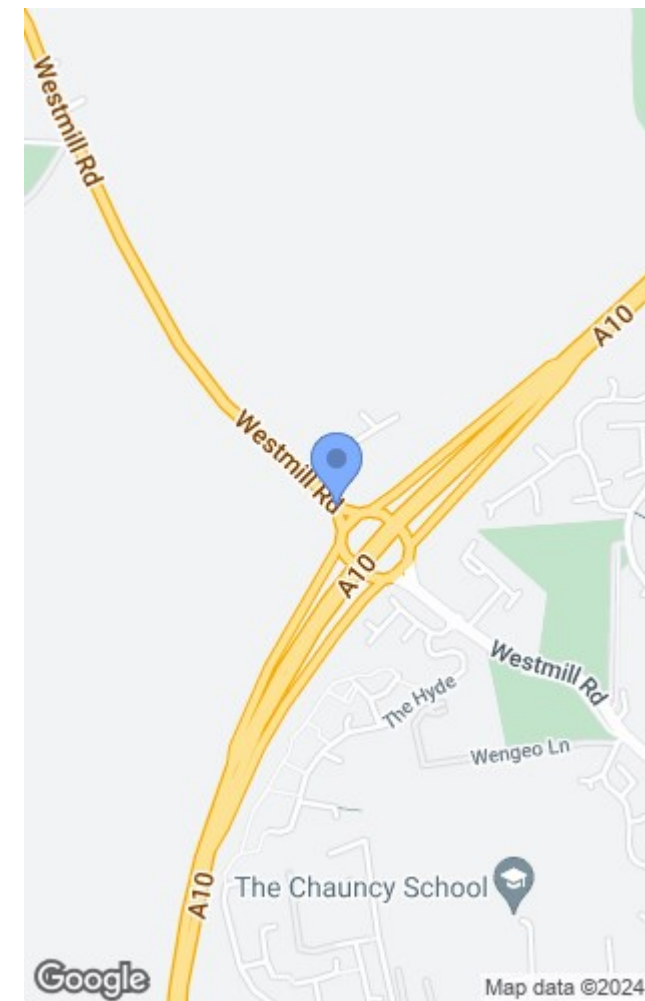
1st Floor  
457 sq.ft. (42.5 sq.m.) approx.



TOTAL FLOOR AREA : 1420 sq.ft. (131.9 sq.m.) approx.

Whilst every attempt has been made to ensure the accuracy of the floorplan contained here, measurements of doors, windows, rooms and any other items are approximate and no responsibility is taken for any error, omission or mis-statement. This plan is for illustrative purposes only and should be used as such by any prospective purchaser. The services, systems and appliances shown have not been tested and no guarantee as to their operability or efficiency can be given.  
Made with Metropix ©2024

These particulars are believed to be correct but their accuracy is not guaranteed and they do not form part of any contract. Whilst every effort is made to ensure the accuracy of these details, it should be noted that the above measurements are approximate only. Any internal photographs are intended as a guide only and it should not be assumed that any of the furniture/fitings are included in any sale. Where shown, details of lease, ground rent and service charge are provided by the vendor and their accuracy cannot be guaranteed, as the information may not have been verified and further checks should be made either through your solicitor. Where appliances, including central heating, are mentioned, it cannot be assumed that they are in working order, as they have not been tested. Please also note that wiring, plumbing and drains have not been check.



Energy Efficiency Rating		Current	Potential
Very energy efficient - lower running costs			
(92 plus) A			
(81-91) B			
(69-80) C			
(55-68) D			
(39-54) E			
(21-38) F			
(1-20) G			
Not energy efficient - higher running costs			
England & Wales		EU Directive 2002/91/EC	
		61	81

Environmental Impact (CO <sub>2</sub> ) Rating		Current	Potential
Very environmentally friendly - lower CO <sub>2</sub> emissions			
(92 plus) A			
(81-91) B			
(69-80) C			
(55-68) D			
(39-54) E			
(21-38) F			
(1-20) G			
Not environmentally friendly - higher CO <sub>2</sub> emissions			
England & Wales		EU Directive 2002/91/EC	

T: 01920 463131  
ware@keithian.com  
www.keithian.com



Offices at Cheshunt Ware and Buntingford  
Managing Director Ian F. Robertson

Keith Ian Ltd trading as Keith Ian Partnership. Registered in England. No. 4700202