



£600,000

Anchor Lane, Ware

KI

Anchor Lane, Ware, SG12 0TG

Welcome to Anchor Lane, Wadesmill, Ware - a charming terraced house that offers the perfect blend of modern living and tranquil countryside views. This delightful property boasts four bedrooms, ideal for a growing family or those in need of extra space. Situated in a quiet location, this home provides a peaceful retreat. The modern interior is sure to impress, offering a stylish and comfortable living space for you and your loved ones to enjoy. One of the standout features of this property is its extension, providing even more room for you to relax and entertain guests with the picturesque countryside views.

Nestled in the heart of Hertfordshire, Wadesmill offers a refreshing escape from the everyday hustle. With its timeless architecture and tranquil atmosphere, this village provides a serene retreat for those seeking a change of pace. Wander its quaint streets, adorned with charming cottages and colorful gardens, and feel the pressures of modern life fade away. Whether you're enjoying a leisurely drink at the local pub or exploring the surrounding countryside, Wadesmill offers a welcome break from the fast-paced routines of city living.





Accommodation Comprises:

Entrance Hall

Lounge

20'6 x 13'5

Kitchen/Diner

23'7 x 19'8

Max points

Downstairs W/C

Bedroom One

15'5 x 10'9

Bedroom Two

12'7 x 9'4

Bedroom Three

13'6 x 8'2

Bedroom Four

8'9 x 7'2

Bathroom

10'10 x 9'9

Max Points

Garden

Summer House

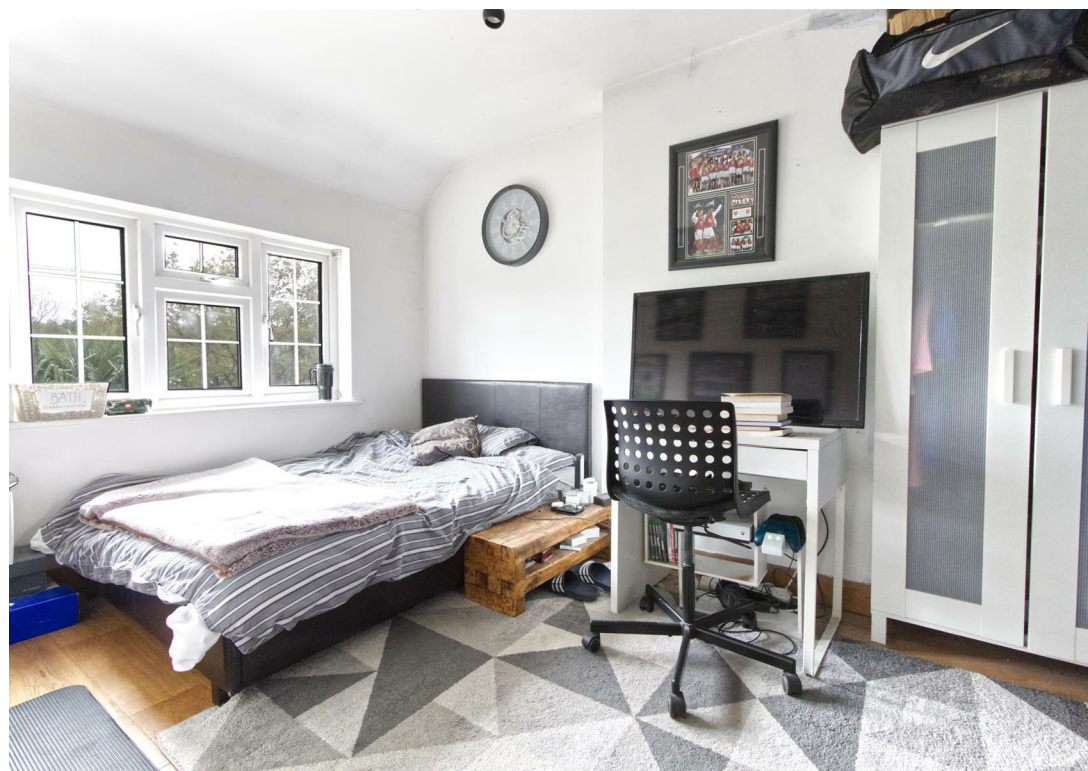
Council Tax Band

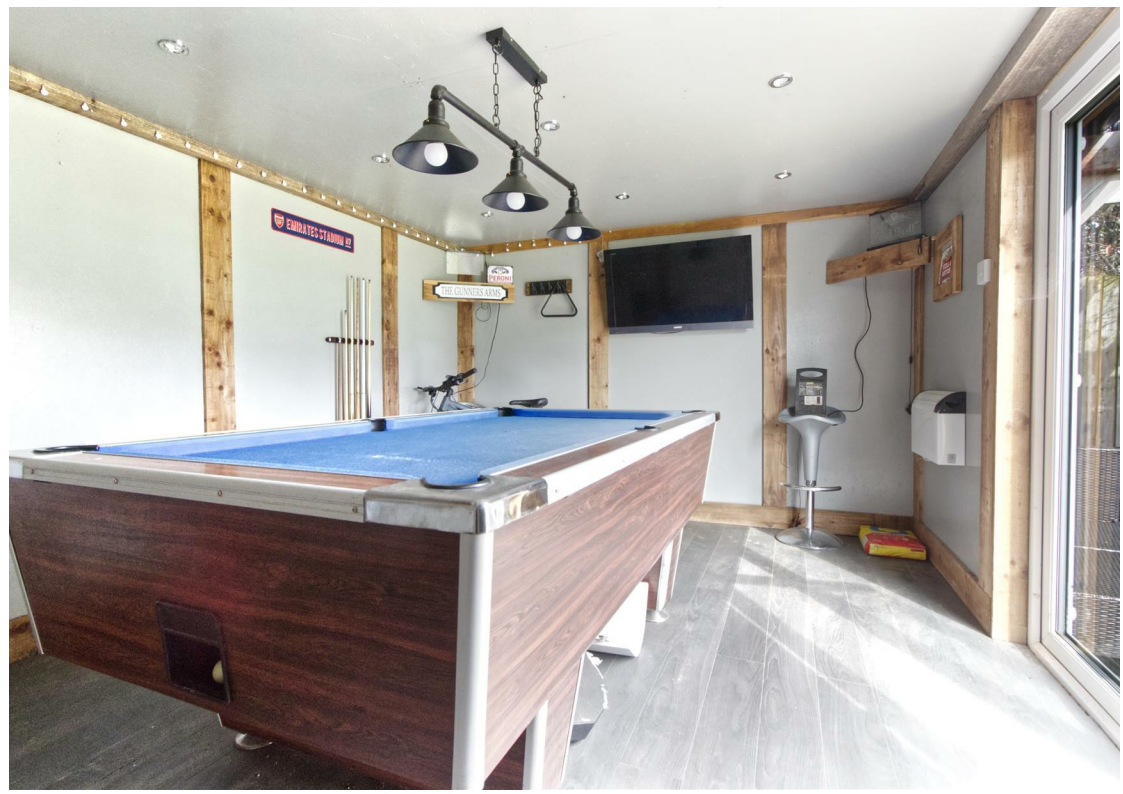
Band C

what3words

///feared.punch.offer



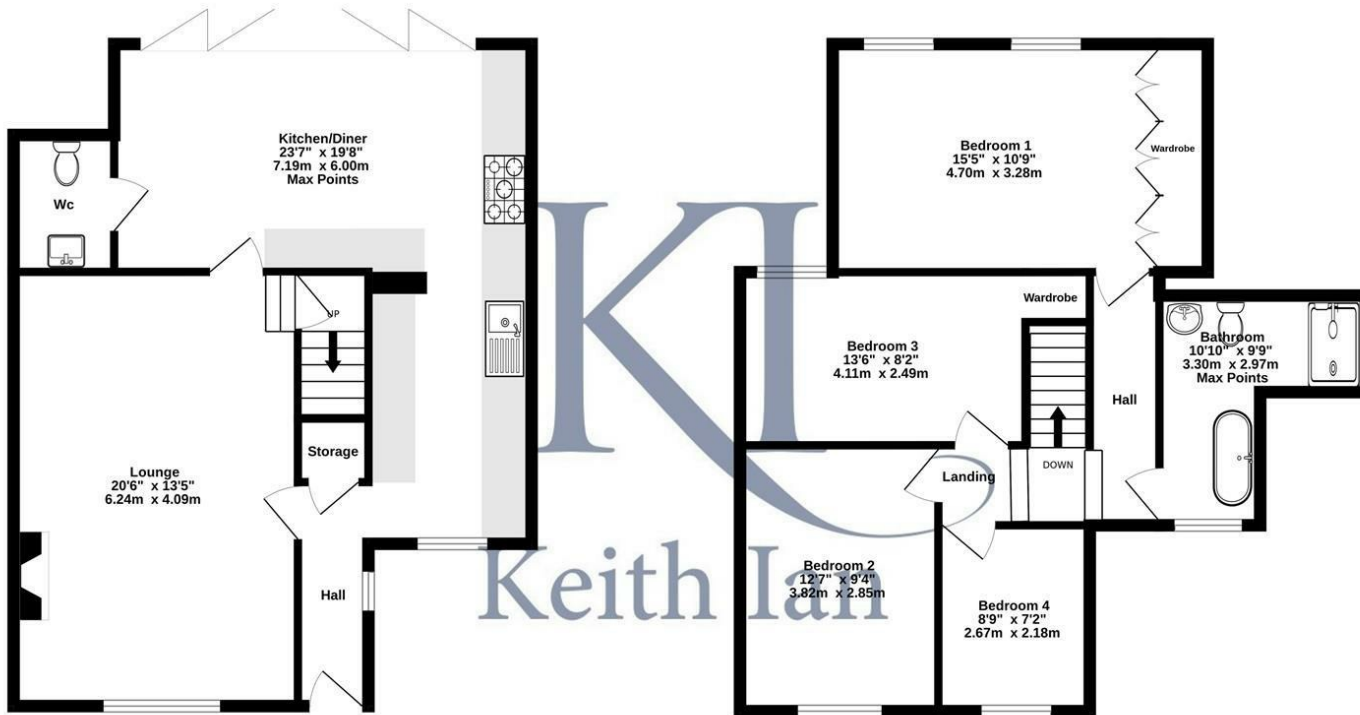






Ground Floor
676 sq.ft. (62.8 sq.m.) approx.

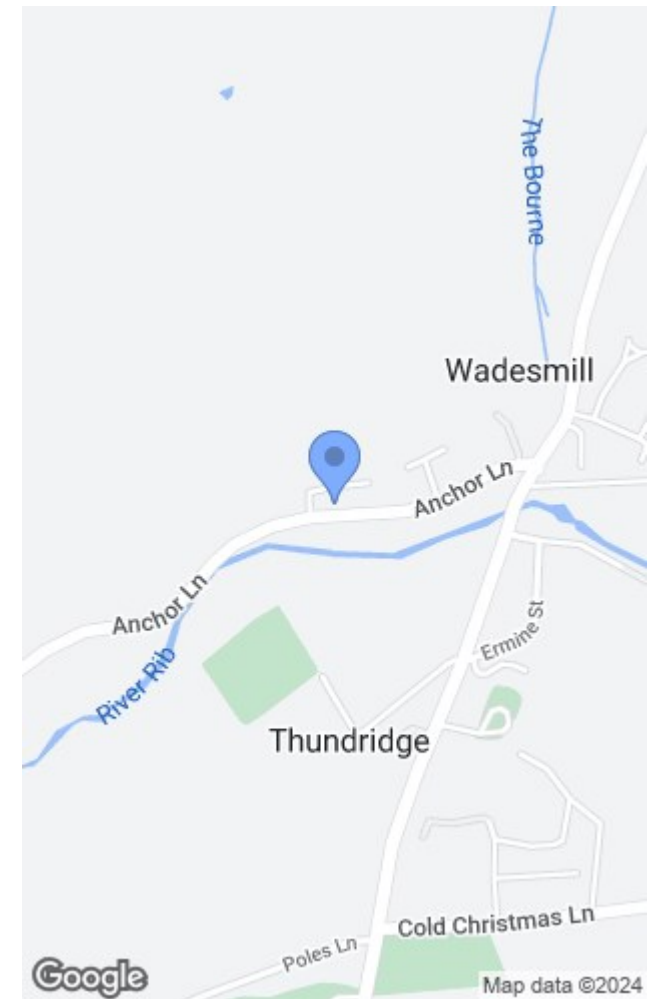
1st Floor
646 sq.ft. (60.0 sq.m.) approx.



TOTAL FLOOR AREA : 1322 sq.ft. (122.8 sq.m.) approx.

Whilst every attempt has been made to ensure the accuracy of the floorplan contained here, measurements of doors, windows, rooms and any other items are approximate and no responsibility is taken for any error, omission or mis-statement. This plan is for illustrative purposes only and should be used as such by any prospective purchaser. The services, systems and appliances shown have not been tested and no guarantee as to their operability or efficiency can be given.
Made with Metropix ©2024

These particulars are believed to be correct but their accuracy is not guaranteed and they do not form part of any contract. Whilst every effort is made to ensure the accuracy of these details, it should be noted that the above measurements are approximate only. Any internal photographs are intended as a guide only and it should not be assumed that any of the furniture/fitments are included in any sale. Where shown, details of lease, ground rent and service charge are provided by the vendor and their accuracy cannot be guaranteed, as the information may not have been verified and further checks should be made either through your solicitor. Where appliances, including central heating, are mentioned, it cannot be assumed that they are in working order, as they have not been tested. Please also note that wiring, plumbing and drains have not been checked.



Energy Efficiency Rating	
Current	Potential
57	99
Very energy efficient - lower running costs (92 plus) A (81-91) B (69-80) C (55-68) D (39-54) E (21-38) F (1-20) G Not energy efficient - higher running costs	
England & Wales EU Directive 2002/91/EC	

Environmental Impact (CO ₂) Rating	
Current	Potential
Very environmentally friendly - lower CO ₂ emissions (92 plus) A (81-91) B (69-80) C (55-68) D (39-54) E (21-38) F (1-20) G Not environmentally friendly - higher CO ₂ emissions	
England & Wales EU Directive 2002/91/EC	

T: 01920 463131
 ware@keithian.com
 www.keithian.com



Offices at Cheshunt Ware and Buntingford
 Managing Director Ian F. Robertson

Keith Ian Ltd trading as Keith Ian Partnership. Registered in England. No. 4700202