



## 3 GAINSBOROUGH CLOSE, FOLKESTONE

£385,000 - Freehold

An elegant and immaculately maintained Four Bedroom Neo-Georgian Home, located close to Folkestone West Station and popular Primary & Secondary Schools... Welcome to Gainsborough Close!



## Moving with Motis



[www.facebook.com/motisestates](https://www.facebook.com/motisestates)

@MotisEstates

[www.instagram.com/motisestates](https://www.instagram.com/motisestates)

## 3 Gainsborough Close Folkestone CT19 5NB

- Four Bedroom Neo Georgian Home
- Beautifully Maintained Throughout
  - Garage Included
- Located Close To Schools & Transport Links
- Mews Style Property Overlooking Well Maintained Gardens
- Low Maintenance Landscaped Garden

### Description

Nestled in the charming mews style development of Gainsborough Close, Folkestone; this exquisite four-bedroom Neo-Georgian house embodies elegance and sophistication while providing a warm and inviting atmosphere. Exuding classic architectural details, the property overlooks the beautifully maintained communal gardens with tall paned windows that flood the interior with natural light.

Inside, the spacious layout includes a welcoming entrance hall that leads to a generous living room, where period features blend seamlessly with modern comforts, creating an ideal space for both relaxation and entertaining. The well-appointed kitchen diner boasts contemporary appliances and ample cabinetry, perfect for culinary enthusiasts. Looking out to the rear garden is also a second reception room with bifold doors, perfect for entertaining in the summer months.

The four bedrooms are thoughtfully designed, offering tranquil retreats with varying views of the beautifully landscaped gardens. The modern shower room boasts a high specification three piece suite and ample storage for towels and toiletries.

Outside, the meticulously maintained and low maintenance garden showcases a delightful blend of mature plants and lush greenery, providing a serene oasis for outdoor gatherings or quiet moments. Accessed from the rear of the property is also a semi-detached garage with the added benefit of light and power whilst the front of the property benefits from several residents parking bays.

Conveniently located, this residence offers easy access to local amenities, schools, and transport links, making it an ideal home for families looking to settle in a vibrant community. With its blend of timeless design and modern living and practical yet secluded location, this home in Gainsborough Close is a real gem.

### Tenure

**Postcode** CT19 5NB

**Viewings** Strictly by appointment only - Property  
Reference MOTIS2\_000218

### Opening Hours:

Monday - Friday 9.00 - 5.30

Saturday 9.00 - 3.00

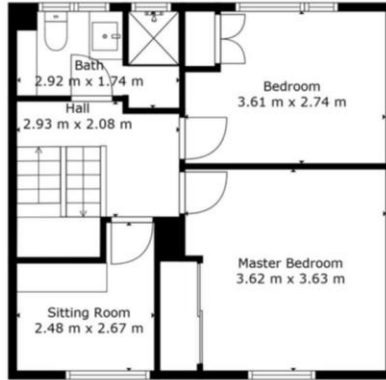




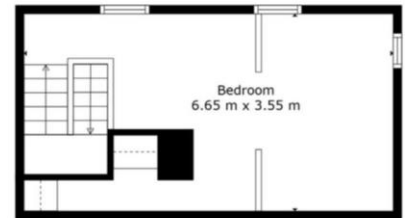




Floor 1



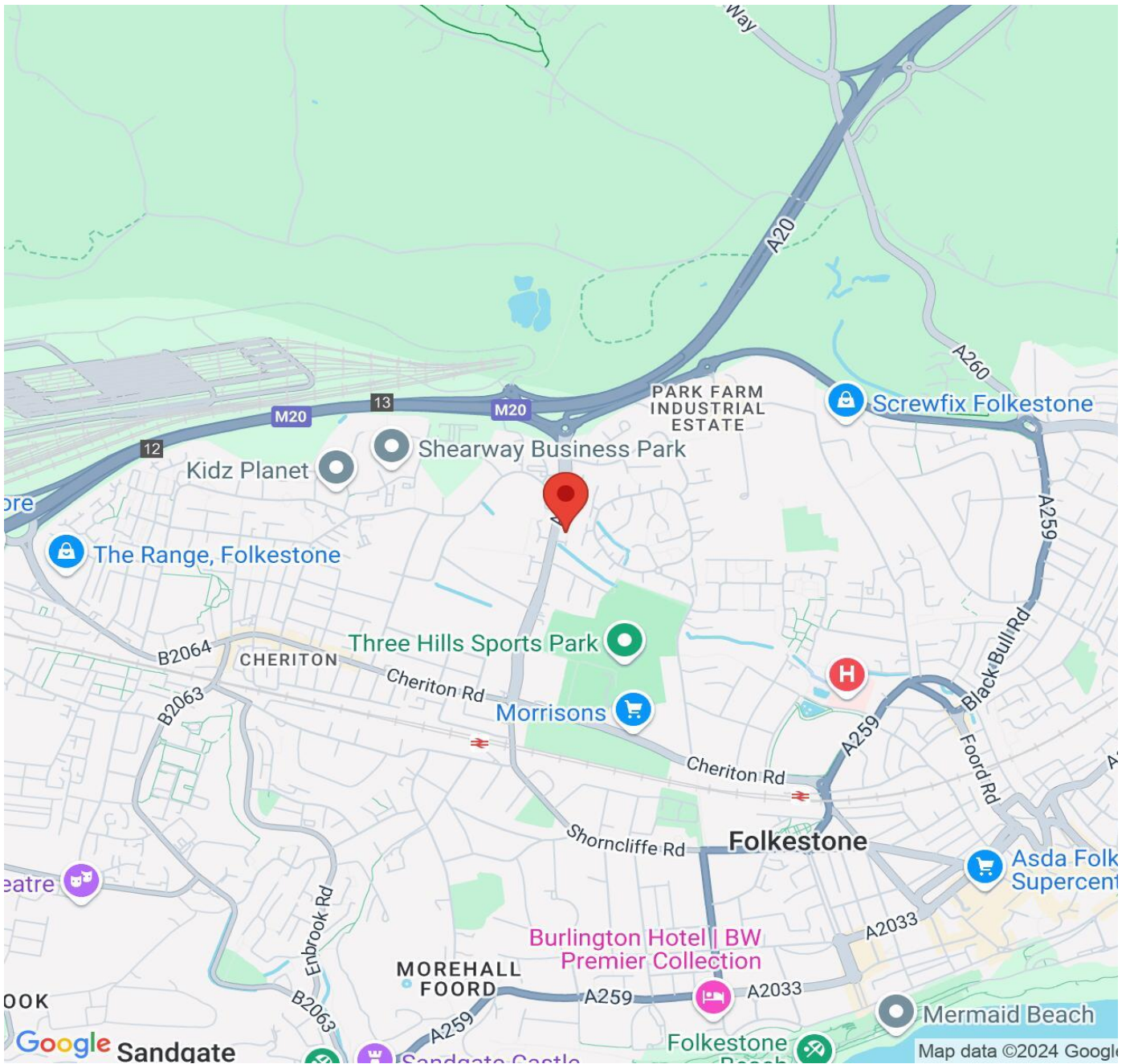
Floor 2



Floor 3

**TOTAL: 119 m2**  
 FLOOR 1: 52 m2, FLOOR 2: 43 m2, FLOOR 3: 24 m2

Floor Plan Created By Cubicasa App. Measurements Deemed Highly Reliable But Not Guaranteed.



**IMPORTANT NOTICE**

Descriptions of the property are subjective and are used in good faith as an opinion and NOT as a statement of fact. Please make further specific enquires to ensure that our descriptions are likely to match any expectations you may have of the property. We have not tested any services, systems or appliances at this property. We strongly recommend that all the information we provide be verified by you on inspection, and by your Surveyor and Conveyancer.