

26 TREMAYNE HOUSE



3



2



2

Bodmin, PL31 2QZ

£255,000



£255,000



46-48 Fore Street, Bodmin,
PL31 2HL
01208 74182


THE PROPERTY SHOP

26 Fore Street, Lostwithiel,
PL22 0BL
01208 872728

26 TREMAYNE HOUSE



3



2



2

Bodmin, PL31 2QZ

£255,000



46-48 Fore Street, Bodmin,
PL31 2HL
01208 74182


THE PROPERTY SHOP

26 Fore Street, Lostwithiel,
PL22 0BL
01208 872728

26 TREMAYNE HOUSE



Bodmin, PL31 2QZ

£255,000



Nestled within the beautifully converted former St Lawrence's Hospital, this characterful Grade II listed end-of-terrace property effortlessly blends period charm with modern comfort. Offering spacious, thoughtfully laid-out accommodation across two floors, this unique three-bedroom home is ideal for those seeking a distinctive residence in a peaceful yet well-connected setting.

The ground floor features a spacious kitchen diner, perfect for both everyday living and entertaining, alongside a generous lounge with the benefit of a through floor lift leading to the master bedroom. A convenient downstairs cloakroom completes the ground level.

Upstairs, the impressive master bedroom features an en-suite shower room and built in storage, while two further well-proportioned double bedrooms offer ample space for a multitude of uses. A family bathroom serves the additional bedrooms.

Externally, the property enjoys access to well-maintained communal gardens and benefits from an allocated parking space, all set within the beautifully landscaped grounds of this exclusive development.

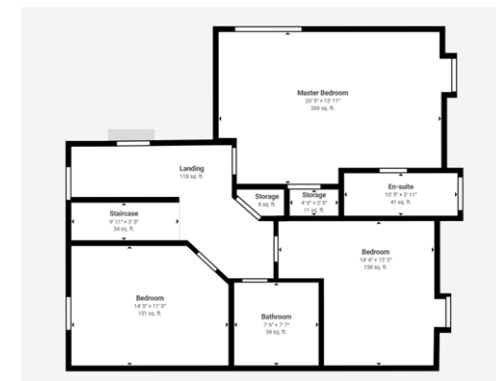
Management charge: £170.55 per month (includes buildings insurance and maintenance of the building's exterior incl. roof)



Ground Floor



First Floor



46-48 Fore Street, Bodmin,
PL31 2HL
01208 74182



26 Fore Street, Lostwithiel,
PL22 0BL
01208 872728

26 TREMAYNE HOUSE



Bodmin, PL31 2QZ

£255,000



KEY FEATURES

Spacious kitchen diner

Characterful lounge

Through floor lift leading from lounge to master bedroom

Downstairs cloakroom

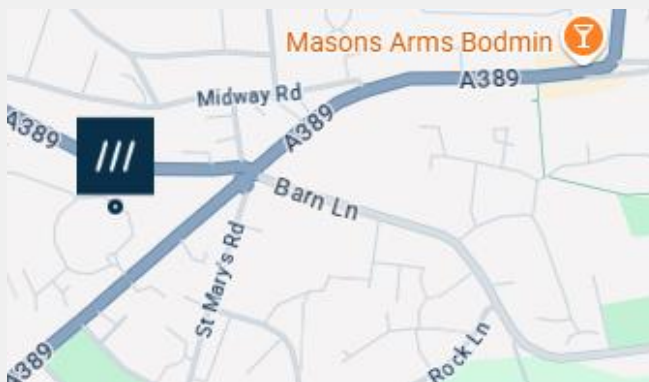
Master bedroom with en-suite

Two further generous double bedrooms

Family bathroom

Communal gardens

Allocated parking space



[what3words///ports.bunk.rocky](https://www.what3words.com/ports.bunk.rocky)



SERVICES

HEATING – GAS

WATER – MAINS

SEWERAGE - MAINS

SCHOOLS

Berrycoombe Primary School

St Petrocs Primary School

St Marys Primary School

Bodmin College

Callywith College

TRANSPORT LINKS

A short drive to join the A30

Nearby Bus Stops for ease

Bodmin Parkway Train Station is Nearby

Local Authority – Cornwall Council

Council Band - E

Tenure - Freehold

46-48 Fore Street, Bodmin,
PL31 2HL
01208 74182


THE PROPERTY SHOP

26 Fore Street, Lostwithiel,
PL22 0BL
01208 872728