





Trembroath, Stithians, Truro, TR3 7DT

Guide Price £695,000

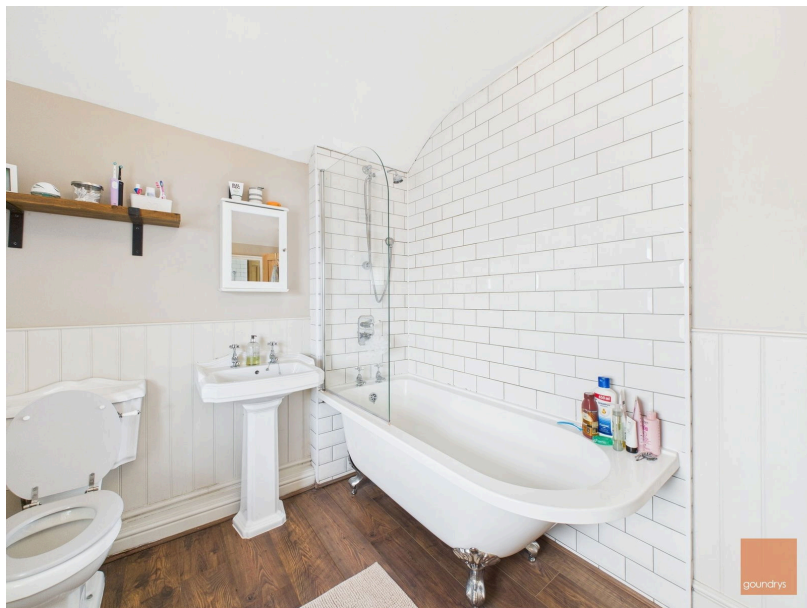
🛏 3 🚿 2 🚗 3





- Beautifully Appointed & Tastefully Extended Period Property
- Picturesque Hamlet Close To Stithians
- Pleasant Enclosed Gardens
- An Early Viewing Is Highly Recommended
- No Onward Chain
- 3 Double Bedrooms & 3 Reception Rooms
- Stunning Kitchen/Family Room
- Double Garage and Extensive Parking
- Truro & Falmouth (9 & 7 Miles Respectively)
- EPC TBC





This is a wonderful opportunity to acquire a superb period property located in the hamlet of Trembroath, on the outskirts of the sought after village of Stithians. Penbroath Farm has been tastefully refurbished, and sympathetically extended by our clients and an early viewing appointment of this delightful family home is strongly recommended.

## TRURO

Treleaven House E5, Threemilestone Industrial Estate, Threemilestone, Truro, TR4 9LD

01872 242425 - Sales

01872 242425 - Lettings

[www.goundrys.co.uk](http://www.goundrys.co.uk)

Agents Note: Whilst every care has been taken to prepare these sales particulars, they are for guidance purposes only. All measurements are approximate are for general guidance purposes only and whilst every care has been taken to ensure their accuracy, they should not be relied upon and potential buyers are advised to recheck the measurements