



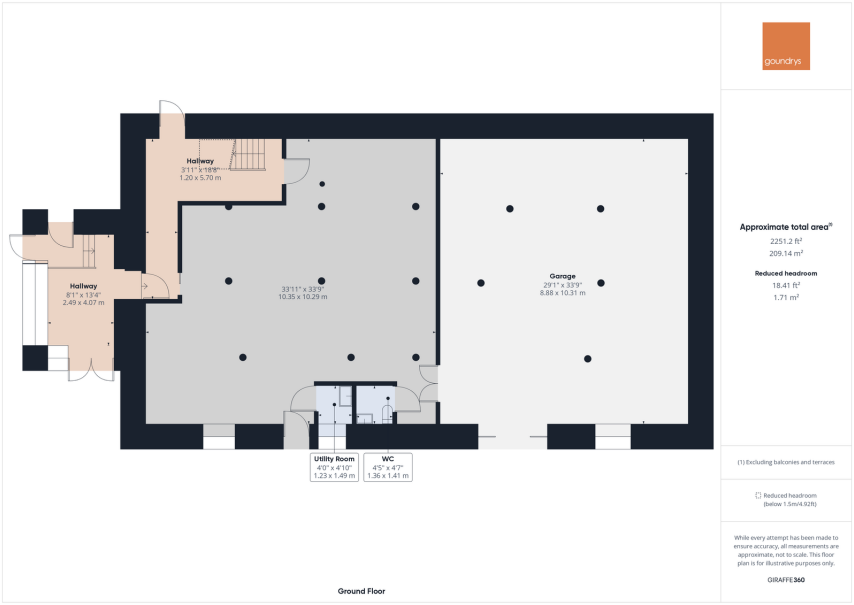
goundrys
S A L E S

experts in selling & buying

St Austell

Guide Price £350,000

0 0 0



Description

Trenance Mill is an attractive stone four storey building, with an adjoining five storey stone and brick tower. In 2008 Restormel Borough Council granted planning permission for a development of 25 dwellings to be created from Trenance Mill and it's associated outbuildings and land. Since that time 13 dwellings have been converted/constructed and that just leaves The Mill and Tower conversion to be completed. We are advised that the original planning permission 08/01766 was amended by Cornwall Council Planning in 2016 (ref PA16/04017) by way of a modification to the section 106 obligation, which effectively has now been removed; leaving no further affordable restrictions.

The majority of Trenance Mill has been cleared, with the exception of the ground floor storeroom, which includes building materials and will be included in the sale (sold as seen)

Agents Information

Tenure: Freehold CL212573 with two associated Leaseholds

Business Rates: For further information, please visit <https://www.gov.uk/find-business-rates>

Council Tax: (For the former flats within the building) please visit : <https://www.gov.uk/council-tax-bands>

Viewing Arrangements

Weekly block viewings, please contact the selling agents for further details.

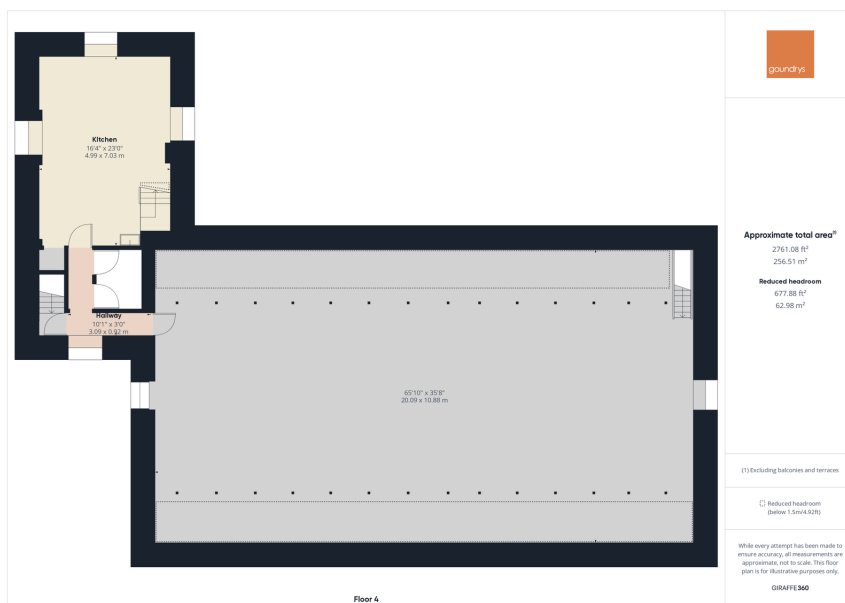
Agents Note

In order to comply with our clients obligation in regards the serving of Section 5 notices to the owners of the 2 leasehold properties, no offers can be accepted until the relevant notice period has expired. For further information, please contact the selling agent.





- REDEVELOPMENT OPPORTUNITY
- ESTABLISHED RESIDENTIAL DEVELOPMENT SITE
- GIA APPROXIMATELY 12,000 SQFT
- TO BE SOLD BY PRIVATE TREATY
- PP FOR 12 APARTMENTS WITH PARKING
- GRADE II LISTED 19th CENTURY FORMER MILL
- CLOSE TO ST AUSTELL TOWN CENTRE
- EPC COMMISSIONED



TRURO

Treleaven House E5, Threemilestone Industrial Estate, Threemilestone, Truro, TR4 9LD

01872 242425 - Sales

01872 242425 - Lettings

www.goundrys.co.uk

Agents Note: Whilst every care has been taken to prepare these sales particulars, they are for guidance purposes only. All measurements are approximate are for general guidance purposes only and whilst every care has been taken to ensure their accuracy, they should not be relied upon and potential buyers are advised to recheck the measurements