



**goundrys**  
SALES

experts in selling & buying



Navigator Way, Truro, TR1 3GE

£300,000

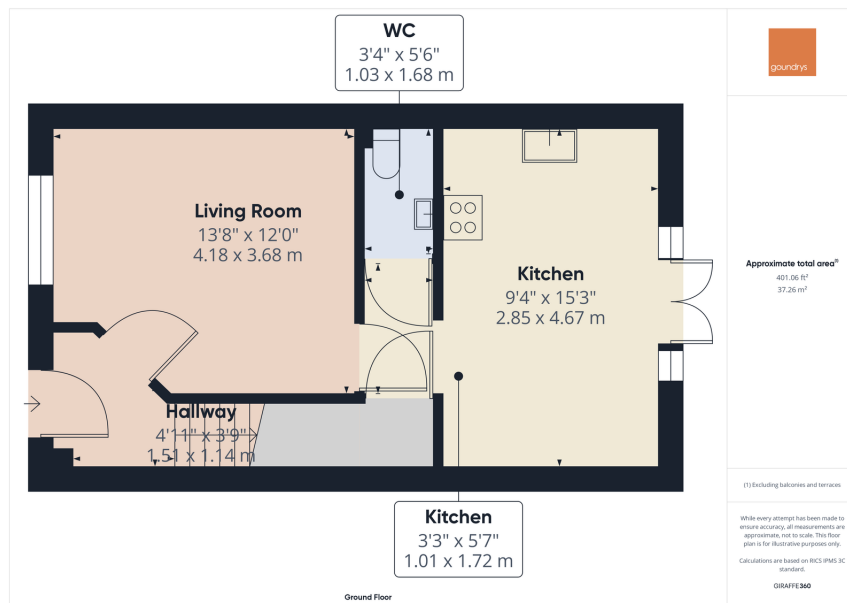
3 3 1



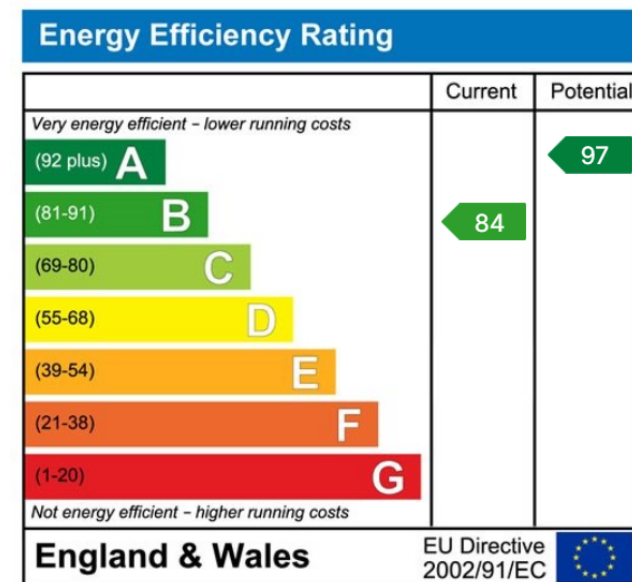


A well presented 3 bedroomed family home found within easy reach to Treliske Hospital, Truro College plus sought after Richard Lander and Threemilestone schools. This lovely family home has a welcoming entrance hallway with doors leading to the following accommodation; The living room is light and airy, being a good size with a door opening into the kitchen/diner. The kitchen/dining room is fitted with a range of wall and base units having complimentary worktops with sink and drainer unit with built in oven, gas hob and extractor fan over. There is space for the fridge/freezer, dishwasher, washing machine and tumble dryer, patio doors open into the garden. Also on the ground floor is a W.C. On the first floor there are the 3 bedrooms with the Master Bedroom benefitting from an En-suite shower room plus the family bathroom. The front of the property is approached via a pathway leading to the front entrance door with designated parking for 2 cars. The rear garden is enclosed by fencing, laid to lawn with a good size patio area immediately outside of the kitchen/diner. Warmed by Double Glazing and Gas Central Heating.





- 2 Designated Parking Spaces • Double Glazing
- Gas Central Heating
- Family Bathroom plus WC
- Enclosed Rear Garden
- Good Size Lounge
- Master Bedroom Ensuite
- Kitchen/Dining Room
- Located within Truro City
- Beautifully Presented 3 Bedroom Property



## TRURO

Treleaven House E5, Threemilestone Industrial Estate, Threemilestone, Truro, TR4 9LD

01872 242425 - Sales

01872 242425 - Lettings

[www.goundrys.co.uk](http://www.goundrys.co.uk)

Agents Note: Whilst every care has been taken to prepare these sales particulars, they are for guidance purposes only. All measurements are approximate are for general guidance purposes only and whilst every care has been taken to ensure their accuracy, they should not be relied upon and potential buyers are advised to recheck the measurements