



Cardinham, Camborne

Guide Price £1,350,000

goundrys
SALES

experts in selling & buying

Cardinham, Camborne

With 10 acres and amenities like stable boxes, a tack area, and even a menage, it's perfect for horse enthusiasts. The permanent cross-country jumps add an extra appeal for those who enjoy riding. in a peaceful setting too.

Overall, Cardinham Farm presents a unique blend of charm, functionality, and modern amenities, making it an ideal retreat for those seeking rural tranquility with contemporary comforts. The extension in the early 2000s has modernized the property while maintaining its charm. The vaulted first floor creates a sense of space and openness, ideal for contemporary living. The layout, with clearly designated kitchen, dining, sitting, and snug areas, promotes both functionality and comfort to this unique 4 bedroom home.





Dual height entrance

Hallway

10.34m x 0.26m (33'11" x 0'10")

Centred around an impressive and bespoke spiral staircase

Bedroom

3.83m x 3.4m (12'6" x 11'1")

Access to





Dressing Area

3.43m x 1.86m (11'3" x 6'1")

Ensuite

2.35m x 1.22m (7'8" x 4'0")

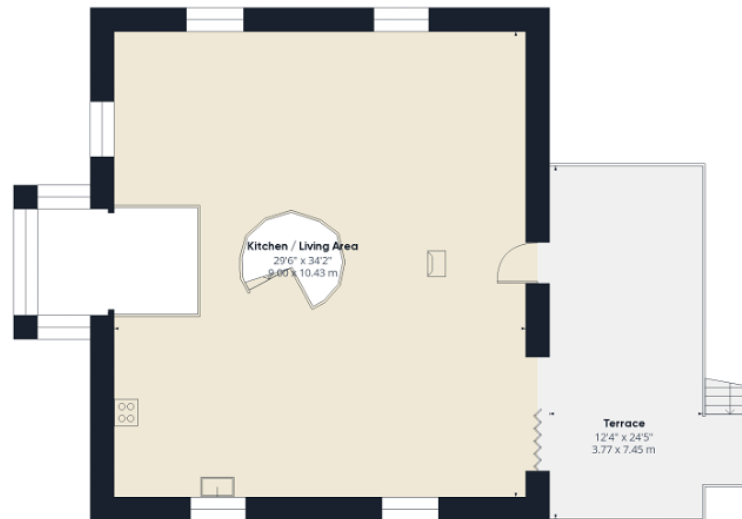
Bedroom

3.7m x 3.45m (12'1" x 11'3")





Ground Floor



Floor 1

Approximate total area⁽¹⁾

2121.69 ft²

197.11 m²

Reduced headroom

18.32 ft²

1.7 m²

(1) Excluding balconies and terraces

Reduced headroom
(below 1.5m/4.92ft)

While every attempt has been made to ensure accuracy, all measurements are approximate, not to scale. This floor plan is for illustrative purposes only.

GIRAFFE360

TRURO

Treleaven House E5, Threemilestone Industrial Estate, Threemilestone, Truro, TR4 9LD

01872 242425 - Sales

01872 242425 - Lettings

www.goundrys.co.uk

Agents Note: Whilst every care has been taken to prepare these sales particulars, they are for guidance purposes only. All measurements are approximate and for general guidance purposes only and whilst every care has been taken to ensure their accuracy, they should not be relied upon and potential buyers are advised to recheck the measurements