



Shottenden Road, Gillingham, Kent, ME7 1QT

£1,200 PCM

- Large Bathroom
- Desirable Residential Location
- Front & Rear Garden
- Available Now

9 Shottenden Road, Gillingham ME7 1QT

Nestled in a quiet Cul-De-Sac, in this residential area of Gillingham is this two bedroom semi-detached bungalow, offering a fantastic opportunity for someone looking for a beautiful home in a quiet and peaceful area, close proximity to Asda superstore, the Medway Tunnel, Chatham Dockside shopping and recreational complex with an array of restaurants, cafes, bars and cinema. Explore the historic Chatham Dockyard, or simply enjoy beautiful walks along the River Medway! Once inside this home you will find, a hallway and leading off this is a cosy living room, fully fitted kitchen/breakfast room with integrated oven, hob, fridge/freezer. Two spacious bedrooms and a fantastic and spacious bathroom and separate shower. Outside is a beautiful secluded rear garden for peaceful, tranquil enjoyment. The property is well decorated and carpeted, unfurnished and available now!

Call friendly lettings team at Wright & Co today, for your earliest appointment to view!



Council Tax Band: C



LIVING ROOM

13'1" x 13'1"

KITCHEN/DINER

17'11" x 8'5"

BEDROOM 1

10'5" x 10'5"

BEDROOM 2

14'1" x 9'2"

BATHROOM

14'9" x 8'2"

OUTSIDE



Directions

Viewings

Viewings by arrangement only. Call 01634 578484 to make an appointment.

EPC Rating:

D

Energy Efficiency Rating		
	Current	Potential
Very energy efficient - lower running costs		
(92 plus) A		
(81-91) B		
(69-80) C		
(55-68) D	60	76
(39-54) E		
(21-38) F		
(1-20) G		
Not energy efficient - higher running costs		
England & Wales	EU Directive 2002/91/EC	

Approximate Gross Internal Area = 65.2 sq m / 702 sq ft

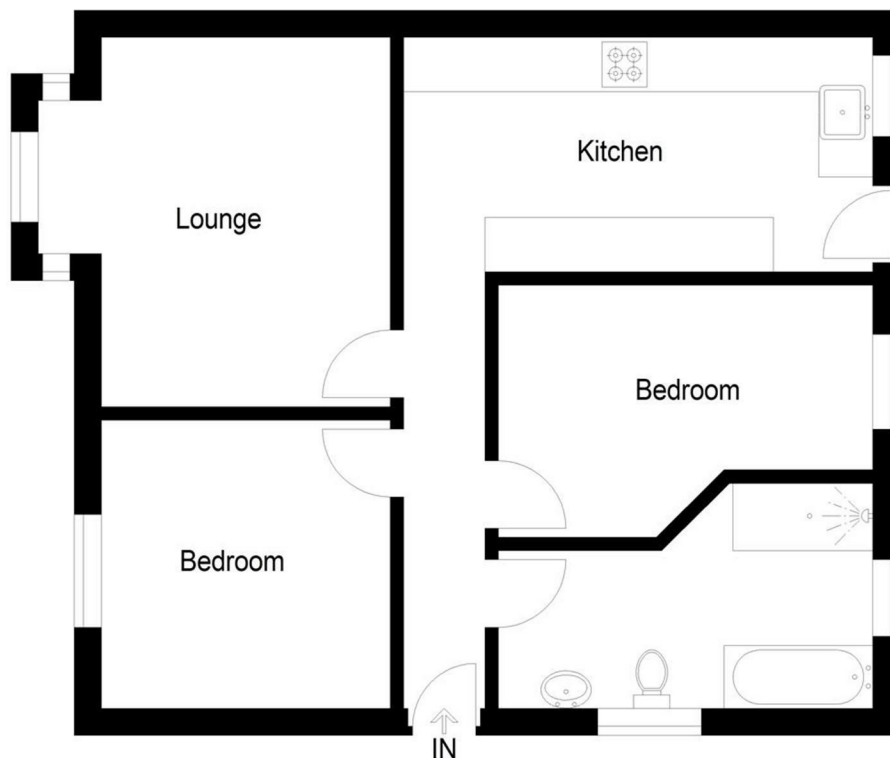


Illustration For Identification Purposes Only.
Not To Scale (ID1191797 / Ref:003041)