

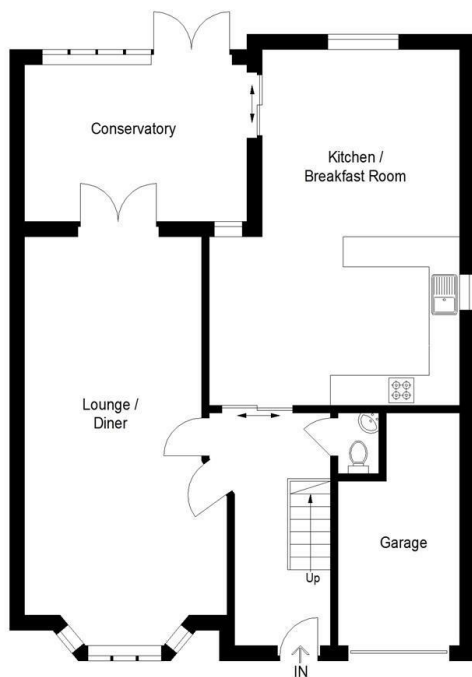


## Allison Avenue, Gillingham, Kent, ME7 3BY

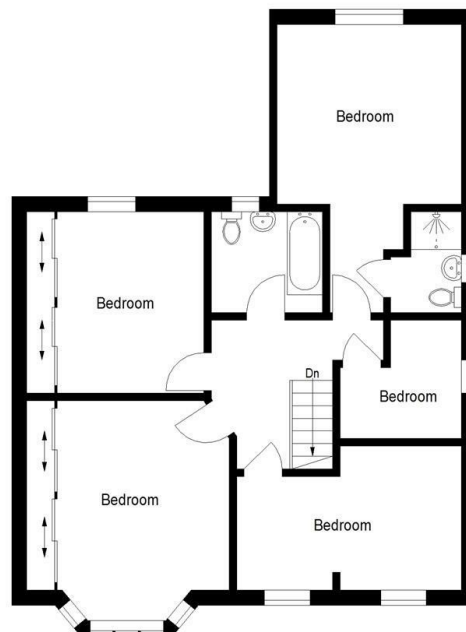
£2,200 Per Calendar Month

- Available July 2024
- Desirable Residential area
- 4/5 Bedrooms
- Off Street Parking/ Garage

Approximate Gross Internal Area = 167.7 sq m / 1805 sq ft  
 Garage = 10.0 sq m / 108 sq ft  
 Total = 177.7 sq m / 1913 sq ft

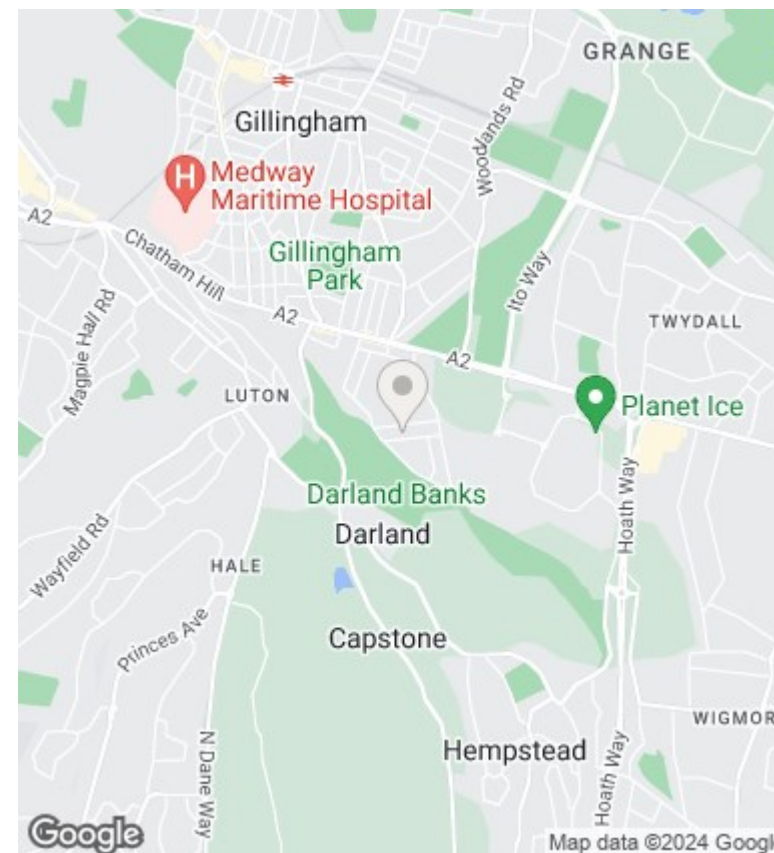


Ground Floor



First Floor

Illustration For Identification Purposes Only. Not To Scale (ID:1052513 / Ref:87254)



## Directions

## Viewings

Viewings by arrangement only. Call 01634 578484 to make an appointment.

## Council Tax Band

D

## EPC Rating:

D

Energy Efficiency Rating		Current	Potential
<i>Very energy efficient - lower running costs</i>			
(92 plus)	A		83
(81-91)	B		
(69-80)	C		
(55-68)	D	65	
(39-54)	E		
(21-38)	F		
(1-20)	G		
<i>Not energy efficient - higher running costs</i>			
<b>England &amp; Wales</b>		EU Directive 2002/91/EC	