



4 Bedrooms



2 Bath/Showers + WC



1 Reception Room



On Street



Private Garden



EPC Band C

Council Tax

Band E - £2,758.72 (2025/26)

Local Authority

St Albans City & District  
Council

 **ashtons**  
for life's great moves

**Harlesden Road, St Albans, AL1**  
**Guide Price £1,050,000**

## Harlesden Road, St Albans

A skilfully extended four-bedroom period home, ideally situated on a prime residential road in Fleetville, just moments from award-winning schools and St Albans mainline station.

- Beautifully Presented Period Home Arranged Over Three Floors
- Four Bedrooms
- Open Plan Kitchen With Bi-folds
- West Facing Rear Garden
- Luxury Bathroom & En-Suite
- Walk To Mainline Station
- Close To Schooling

### Description

The ground floor features a welcoming entrance hall leading to a spacious bay-fronted living room, complete with a fireplace and bespoke fitted shutters, creating a warm and inviting space. To the rear, an impressive open-plan kitchen, dining, and family room serves as the heart of the home. This beautifully designed space boasts a sleek, modern kitchen with high-end appliances, ample storage, and an island with a breakfast bar. Expansive bifold doors open onto the west-facing rear garden, allowing natural light to flood the space and creating a seamless indoor-outdoor connection. A convenient ground-floor cloakroom completes this level.

The upper floors accommodate four well-proportioned bedrooms, including a luxurious principal suite with a stylish en-suite shower room. A fabulous family bathroom, featuring a freestanding bath, adds a touch of elegance and serves the additional bedrooms.

Externally, the west-facing rear garden has been thoughtfully landscaped to maximize sunlight throughout the day. A spacious patio provides the perfect setting for outdoor dining and entertaining, while the well-maintained lawn offers an excellent space for relaxation.

Ideally located just moments from highly regarded local schools, independent shops, and St Albans' vibrant city centre, this stunning home is perfectly suited for modern family living.

### Location

Harlesden Road is located in Fleetville, to the east of St Albans, and within easy reach of the city centre's amenities with a good range of local shops and restaurants. There are well regarded schools also within easy reach and the property is less than a mile from the mainline station where there are fast rail links into central London.

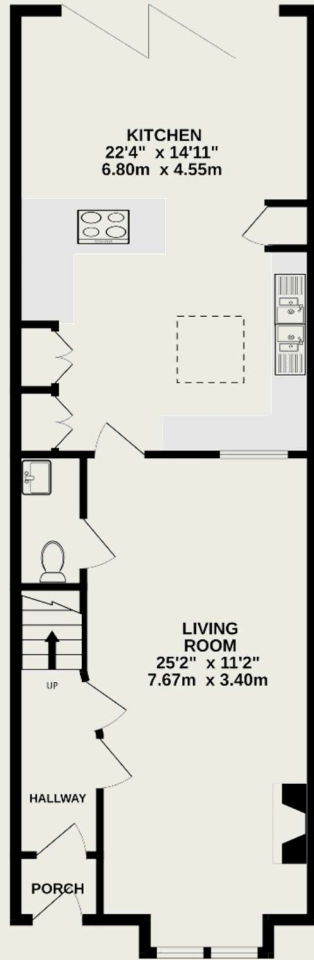




**Important Information**

These particulars do not constitute an offer or contract in whole or part. The statements contained herein are made without responsibility on the part of Ashtons or the vendors and they cannot be relied upon as representatives of fact. In respect of floor plans, these are for illustrative purposes only. The measurement and position of each element is approximate and must be viewed as such. Intending purchasers should therefore satisfy themselves by inspection or otherwise as to their correctness. The vendors do not make or give, and neither Ashtons nor any person in their employment has any authority to make or give, any representation or warranty whatsoever in relation to this property. We offer a wide range of services through third party providers including solicitors, surveyors, removal firms, mortgage providers and EPC suppliers. We receive additional payments for administering suppliers quoting software and making referrals. You are not under any obligations to use these services and it is your discretion whether you choose to deal with these parties or your own preferred supplier. You should be aware the average payment we received in 2021 equated to £48.36 per referral.

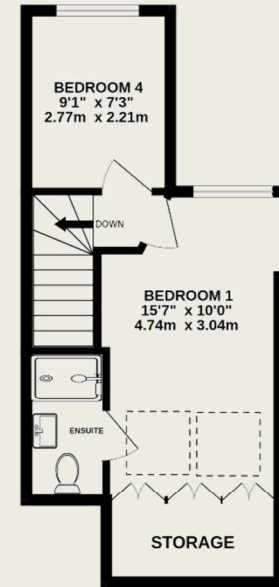
GROUND FLOOR  
710 sq.ft. (66.0 sq.m.) approx.



1ST FLOOR  
413 sq.ft. (38.4 sq.m.) approx.



2ND FLOOR  
315 sq.ft. (29.3 sq.m.) approx.



TOTAL FLOOR AREA : 1438 sq.ft. (133.6 sq.m.) approx.

This floorplan is for illustrative purposes only. The measurement and position of each element is approximate and must be viewed as such.