


**Westminster Court
St. Albans
AL1 2DX**

 **2 Bedrooms**

 **1 Bathroom**

 **1 Reception Room**

 **Communal Gardens**

 **Residents Parking**

 **EPC Band C**

Council Tax
Band: D £2,257.13 (2025/2026)
Local Authority: St Albans City &
District Council
Tenure: Leasehold, 999 years from 28
November 2003
Service Charge: £750 per annum

Guide Price
£385,000 Leasehold

 **ashtons**
for life's great moves



A bright two bedroom maisonette in a convenient location in the centre of St Albans. This first floor property is offered to the market with the advantage of no onward chain.

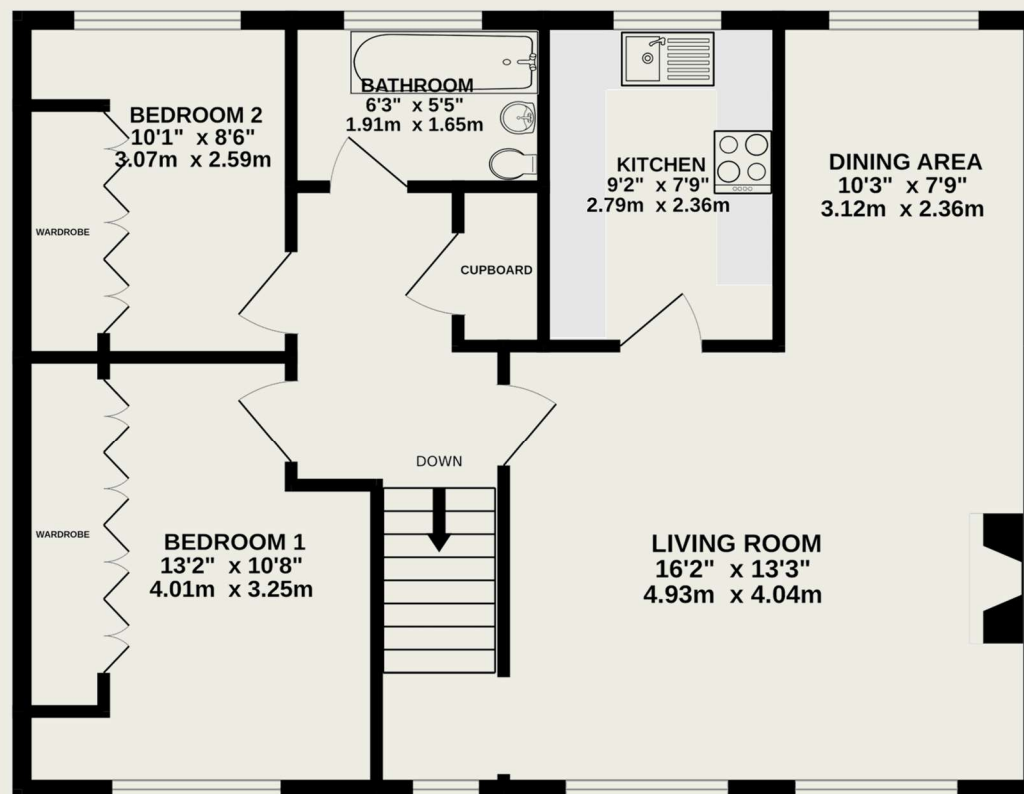
Description

This two bedroom property occupies a lovely position within the popular Westminster Court development with views of open green space adjacent and to front. It has a private front door at ground floor which leads directly up and into the maisonette, and the landing leads into a spacious dual aspect reception room with ample space for living and dining furniture and pleasant views of St Albans and its Abbey to the rear. The separate kitchen has a good range of storage cupboards and several appliances which are included in the sale, and there may be scope to open this up to the reception room with the necessary consents. Both bedrooms can accommodate a double bed and have useful fitted wardrobes, and there is a fully tiled bathroom reached from the landing.

Please note a separate garage can be rented from the Management Agent at an additional cost, if needed.

Location

Westminster Court is located close to the city centre and has easy access to both the City and Abbey Flyer Stations. St Albans excellent range of amenities are within easy reach and Verulam Park is a short walk away.



TOTAL FLOOR AREA : 721 sq.ft. (66.9 sq.m.) approx.

This floor plan is for illustrative purposes only. The measurement and position of each element is approximate and must be viewed as such

Important Information

These particulars do not constitute an offer or contract in whole or part. The statements contained herein are made without responsibility on the part of Ashtons or the vendors and they cannot be relied upon as representatives of fact. In respect of floor plans, these are for illustrative purposes only. The measurement and position of each element is approximate and must be viewed as such. Intending purchasers should therefore satisfy themselves by inspection or otherwise as to their correctness. The vendors do not make or give, and neither Ashtons nor any person in their employment has any authority to make or give, any representation or warranty whatsoever in relation to this property.

We offer a wide range of services through third-party providers including solicitors, surveyors, removal firms, mortgage providers and EPC suppliers. We receive additional payments for administering suppliers quoting software and making referrals. You are not under any obligation to use these services and it is your discretion whether you choose to deal with these parties or your own preferred supplier. You should be aware the average payment we received in 2021 equated to £48.36 per referral.