

Harvest Court
St Albans
AL4 9QY

 2 Bedrooms

 1 Bathroom

 1 Reception Room

 Residents Parking

 Communal Gardens

 EPC Band E

Council Tax
Band: D £2,314.17 (2025/2026)
Local Authority: St Albans City &
District Council
Tenure: Leasehold, 125 years from 1st
July 1988
Service Charge: £3,900 per annum

Guide Price
£250,000 Leasehold

 **ashtons**
for life's great moves



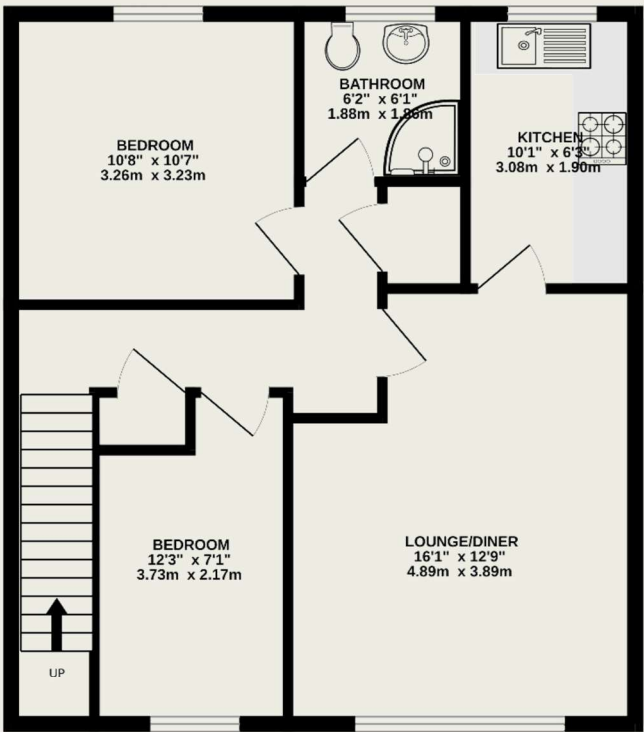
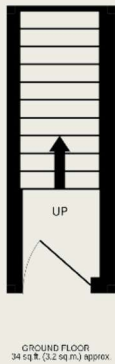
This spacious and immaculately presented two bedroom first floor retirement maisonette for the over 55's benefits from private residents parking and beautiful communal gardens, located in a sought after cul-de-sac within Jersey Farm, just a stone's throw from local amenities.

Description

The property is accessed via a private entrance hall with staircase to the first floor, fitted with a contemporary, foldaway stairlift. A welcoming landing leads to all rooms and includes useful features such as a security entry phone system, emergency pull cord, loft access, and multiple storage options. The spacious lounge/dining room to the front is light and comfortable, with a modern, wall-mounted, remote controlled electric fire, TV and telephone points, and decorative coving. The adjoining kitchen is in impeccable condition and is fully fitted with washer/dryer, slimline dishwasher, eye-level double NEFF oven and NEFF hob. Both bedrooms are well-proportioned with built-in wardrobes and electric heating, with the principal bedroom positioned to the rear for added privacy. The bathroom is fitted with an easy-access shower, low-level WC, and hand basin, as well as a heated towel rail. There are grab rails located for convenience both in the bathroom and in the downstairs lobby. With its comfortable accommodation, supportive community setting, and excellent location, this home presents a wonderful lifestyle opportunity for the over 55's looking to enjoy retirement living.

Location

Harvest Court is situated in Jersey Farm, on the northeast side of St Albans. It's conveniently located near a local parade of shops, offering amenities such as a Tesco Metro, takeaway options, doctors' surgery, a dentist, a pharmacy, hairdresser and barber, coffee shop, community hall with regular activities, and a public house. For a wider range of shopping and leisure activities, residents can easily access St Albans city centre and the main line railway station with just a short car or bus ride.



TOTAL FLOOR AREA : 634 sq.ft. (58.9 sq.m.) approx.

This floor plan is for illustrative purposes only. The measurement and position of each element is approximate and must be viewed as such

Important Information

These particulars do not constitute an offer or contract in whole or part. The statements contained herein are made without responsibility on the part of Ashtons or the vendors and they cannot be relied upon as representatives of fact. In respect of floor plans, these are for illustrative purposes only. The measurement and position of each element is approximate and must be viewed as such. Intending purchasers should therefore satisfy themselves by inspection or otherwise as to their correctness. The vendors do not make or give, and neither Ashtons nor any person in their employment has any authority to make or give, any representation or warranty whatsoever in relation to this property.

We offer a wide range of services through third-party providers including solicitors, surveyors, removal firms, mortgage providers and EPC suppliers. We receive additional payments for administering suppliers quoting software and making referrals. You are not under any obligation to use these services and it is your discretion whether you choose to deal with these parties or your own preferred supplier. You should be aware the average payment we received in 2021 equated to £48.36 per referral.



01727 819666



salessa@ashtons.co.uk



ashtons.co.uk

10 London Road, St. Albans, AL1 1NG
Offices: Harpenden • St Albans • Welwyn Garden City • Berkhamsted • Hitchin • RedbournA4