



3 Bedrooms



2 Bath/Shower Rooms



1 Reception Room



Off-Street Parking



Landscaped South Facing



EPC Band B

Council Tax

Band E: £2,865.41 (2025/2026)

Local Authority

St Albans City & District  
Council



**The Firs, Ragged Hall Lane, St. Albans, AL2 3LB**  
**Guide Price £735,000 Freehold**



## Ragged Hall Lane, St. Albans, AL2 3LB

An attractive, chalet bungalow presented in excellent condition. This contemporary semi-detached property has well planned accommodation arranged over two floors and has a driveway with parking for two vehicles.

Beautifully Presented Chalet Bungalow Arranged Over Two Floors

Living Room with Wood-Burning Stove

Superb Open-Plan Kitchen/Dining Room with Doors Onto Garden

Three Bedrooms

Two Bathrooms

Off-Street Parking for Two Vehicles

Close to Local Amenities & Transport Networks

### Description

This semi-detached property is set back from the road and is approached via a bloc-paved driveway past a lawned front garden. The front door opens into a bright, tiled entrance hall and to one side of this there is a good sized double bedroom with smart en-suite shower room, while to the other there is a smaller bedroom which is currently in use as a study. The ground floor layout also includes a pleasant separate living room with a wood-burning stove and a lovely open space at the rear of the bungalow, designed to incorporate a stylish kitchen with a dining area beyond, well lit with a large rooflight and glazed doors to the garden. Stairs lead from the hall to the first floor where there is a further double bedroom with dormer windows to the front and rear and excellent storage provision, and a sizeable en-suite bathroom with separate shower.

The external spaces have been landscaped for low maintenance, and there is a south-facing paved seating area accessed from the dining area which steps up to a gravelled terrace.

### Location

Ragged Hall Lane is a semi-rural road to the south of St Albans, in the popular area of Chiswell Green. Its location gives easy access to the wide range of amenities in the city centre and there are also shops more locally, as well as a doctors surgery and a popular primary school.

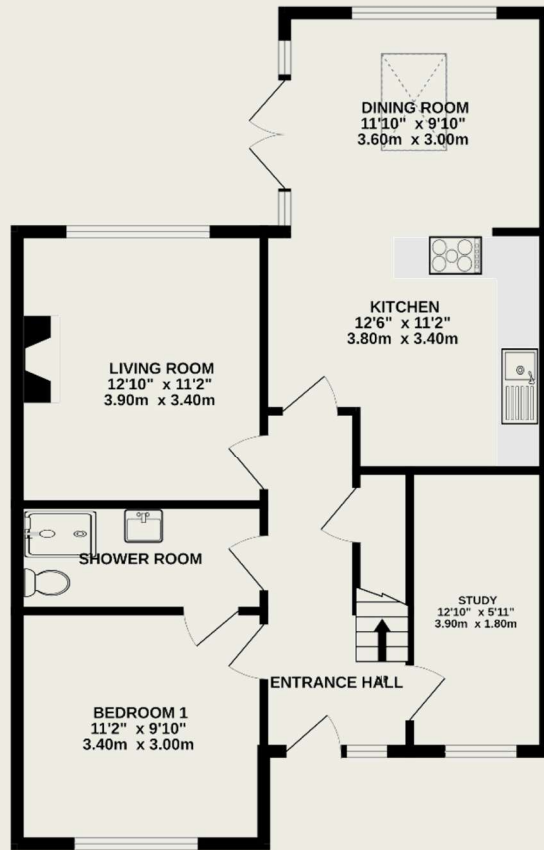




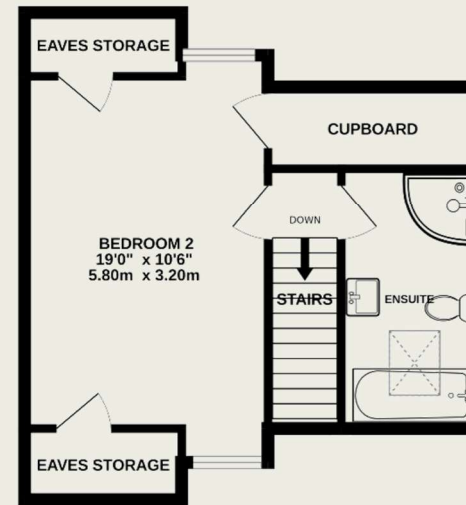


**Important Information**

These particulars do not constitute an offer or contract in whole or part. The statements contained herein are made without responsibility on the part of Ashtons or the vendors and they cannot be relied upon as representatives of fact. In respect of floor plans, these are for illustrative purposes only. The measurement and position of each element is approximate and must be viewed as such. Intending purchasers should therefore satisfy themselves by inspection or otherwise as to their correctness. The vendors do not make or give, and neither Ashtons nor any person in their employment has any authority to make or give, any representation or warranty whatsoever in relation to this property. We offer a wide range of services through third party providers including solicitors, surveyors, removal firms, mortgage providers and EPC suppliers. We receive additional payments for administering suppliers quoting software and making referrals. You are not under any obligations to use these services and it is your discretion whether you choose to deal with these parties or your own preferred supplier. You should be aware the average payment we received in 2021 equated to £48.36 per referral.



GROUND FLOOR  
608 sq.ft. (56.5 sq.m.) approx.



1ST FLOOR  
356 sq.ft. (33.1 sq.m.) approx.

TOTAL FLOOR AREA : 1072sq.ft. (99.6 sq.m.) approx.

This floor plan is for illustrative purposes only. The measurement and position of each element is approximate and must be viewed as such