



16 Green Yard Vincent Walk, Dorking, Surrey, RH4 2FZ

Price Guide £399,950



- 2 BEDROOM FIRST FLOOR APARTMENT
- MODERN INTERIORS
- EASY REACH OF TRANSPORT LINKS
- ALLOCATED PARKING
- 24 MONTH AFTERCARE
- OPEN PLAN LIVING
- LOCATED IN THE HEART OF DORKING
- SURROUNDED BY THE SURREY HILLS
- CONTEMPORARY SPECIFICATION
- 10 YEAR WARRANTY

Description

CHARMING TWO BEDROOM FIRST FLOOR APARTMENT IN CENTRAL DORKING

Plot 16 is a charming two-bedroom, first-floor apartment at Green Yard offering a perfect balance of modern living and classic appeal. Ideal for those seeking convenience to local amenities and transport links, the apartment is also surrounded by the natural beauty of Dorking and the Surrey Hills. Featuring contemporary fixtures and fittings throughout, the home boasts an open-plan design, two double bedrooms, including a principal bedroom with an en-suite double shower, a separate bathroom, and comes with a 10 year Build Warranty and allocated parking space.

Green Yard is just a short walk from Dorking's South Street, where you'll find boutique shops and fine dining, and is conveniently close to Dorking's train stations, offering easy access to the surrounding areas.

Show Home Available - viewings by appointment.

Situation

With the perfect blend of contemporary elegance and timeless charm, the apartments in Green Yard provide the ideal sanctuary for those seeking comfort, style and convenience. Green Yard is set within an enviable location in the heart of Dorking, and surrounded by the stunning landscapes of the Surrey Hills. There is a unique blend of rural tranquillity and urban sophistication, with Dorking being both a vibrant and charming town that combines rich history with contemporary amenities. An array of restaurants, supermarkets, theatre, cinema screen and leisure centre provide entertainment for everyone.

Tenure

Leasehold - Share of Freehold

EPC

C

Council Tax Band

TBC

Lease

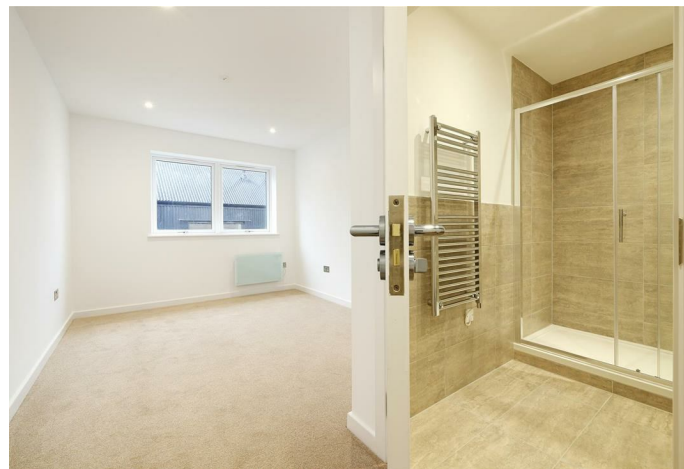
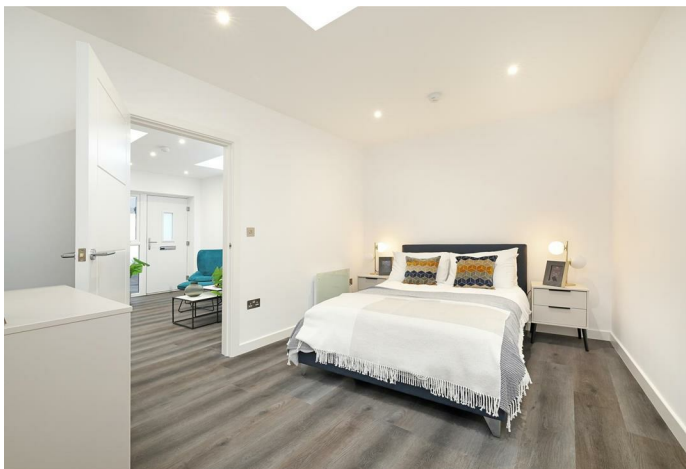
999 Years

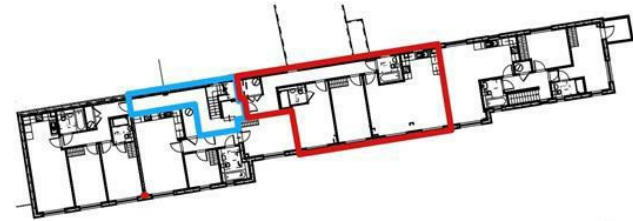
Service Charge

£950 p.a

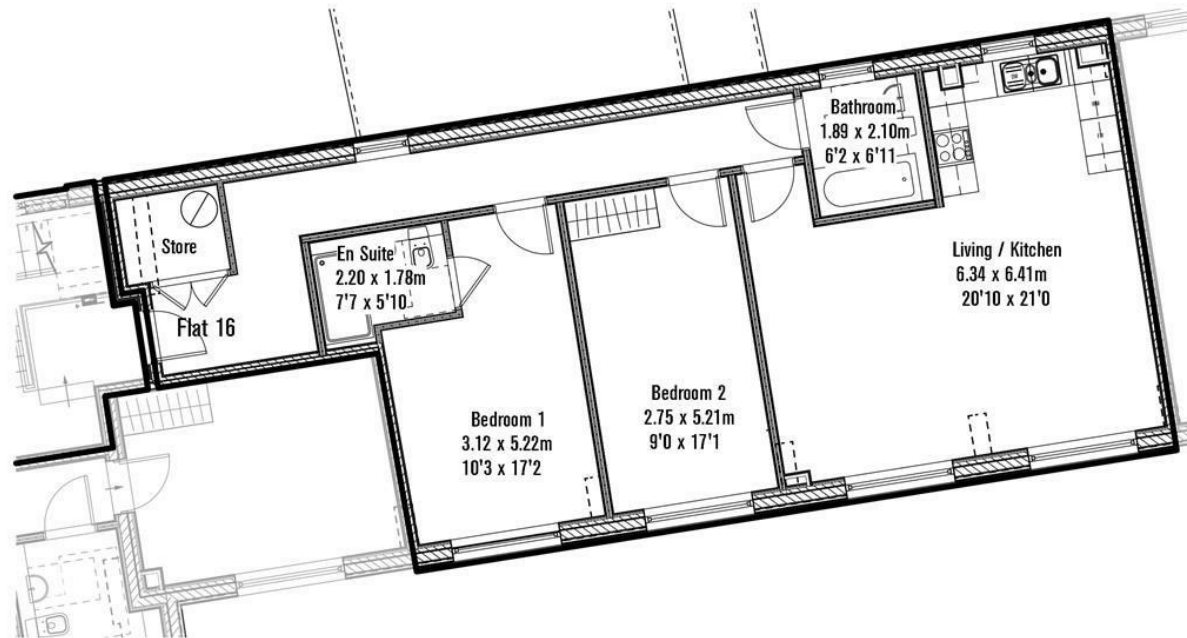
Ground Rent

Peppercorn





First Floor Reference Plan
Scale: 1:500 @ A4



Flat 16 Green Yard,
Vincent's Walk,
Dorking, Surrey
RH4 2FZ

Note - All dimensions given are approximate and should be checked at the property before placing any reliance upon them. Exact opening positions, partition placing and detail may vary slightly from construction, so should be checked at the property before making decisions reliant upon them.

171 High Street, Dorking, Surrey, RH4 1AD
Tel: 01306 877775 **Email:** dorking@patrickgardner.com
www.patrickgardner.com

These particulars, whilst believed to be accurate are set out as a general outline only for guidance and do not constitute any part of an offer or contract. Intending purchasers should not rely on them as statements of representation of fact, but must satisfy themselves by inspection or otherwise as to their accuracy. No person in this firm's employment has the authority to make or give any representation or warranty in respect of the property.

