

RIVERHOMES

**Imperial Wharf
Fulham SW6**

**£2,925 per month
Furnished or Unfurnished**



Imperial Wharf Fulham SW6

Discover the epitome of modern living in this exquisitely presented two-bedroom apartment, located on the fourth floor of the prestigious Imperial Wharf riverside development. Designed for those who appreciate style and sophistication, this residence offers a luxurious retreat with breathtaking views of the River Thames.

The apartment features a spacious reception room bathed in natural light, thanks to its floor-to-ceiling windows, and offers access to a private balcony with stunning river views, perfect for relaxing or entertaining. The sleek, stylishly fitted kitchen is a culinary enthusiast's dream, equipped with modern appliances and ample storage space.

The master bedroom serves as a tranquil haven with fitted wardrobes and an en suite shower room, providing both comfort and privacy. The well-proportioned second bedroom, also with fitted wardrobes, is ideal for guests or as a home office. Both the en suite and main bathroom boast contemporary finishes, enhancing the apartment's overall elegance.

KEY FEATURES

2 bedrooms

2 bathrooms

Floor-to-ceiling windows in the reception room

Modern kitchen

Ample storage

24-hour concierge service

Lift access

Conveniently located close to shops, restaurants and public transport



Imperial Wharf is a secure development offering 24-hour porter service and lift access, ensuring both security and convenience. Nestled near the exclusive Harbour Club and the vibrant Fulham Broadway, the location boasts a variety of chic shops, trendy bars, and gourmet restaurants.

Situated on the banks of the River Thames, Imperial Wharf provides unparalleled access to a variety of local attractions and amenities. Fulham Broadway Underground Station (District Line) is nearby, offering swift access to the West End and central London. For motorists, the A4/M4 routes facilitate easy travel towards Heathrow Airport, the West, and the M25. Additionally, the proximity to Wandsworth Bridge Road and Fulham Road offers a plethora of shopping and dining experiences, while the exclusive Harbour Club and scenic Chelsea Harbour provide excellent leisure and fitness facilities.

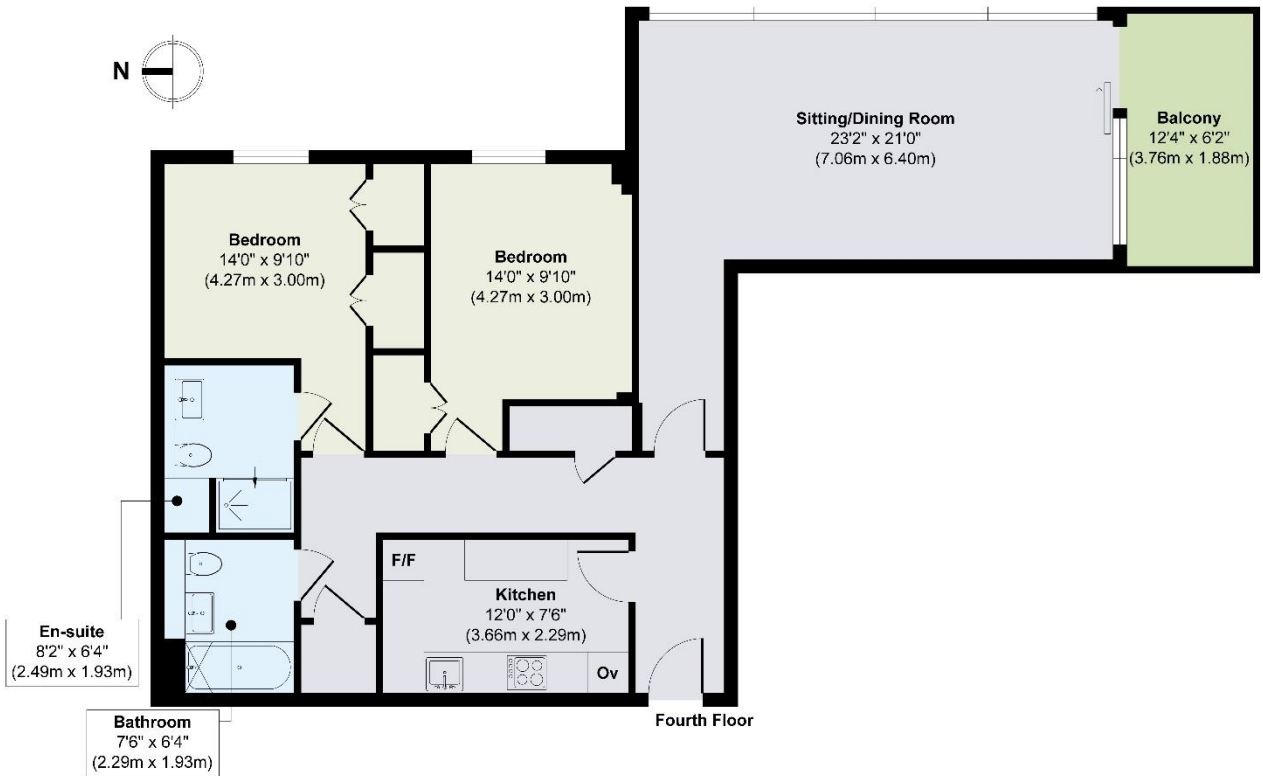


ENERGY PERFORMANCE CERTIFICATE

Score	Energy rating	Current	Potential
92+	A		
81-91	B		
69-80	C	70 C	72 C
55-68	D		
39-54	E		
21-38	F		
1-20	G		

KEY INFORMATION

- Local authority:** Hammersmith and Fulham
- Internal area:** 956 sq. ft. / 88.81 sq. m.
- Garden area:** Balcony
- No. of bedrooms:** 2
- Council tax band:** G



World Waterside Ltd trading as riverhomes for themselves and its clients give notice that 1: They are not authorised to make or give any representations or warranties in relation to the property either here or elsewhere, either on their own behalf or on behalf of their client or otherwise. 2: These particulars do not form part of any offer or contract and must not be relied upon as statements or representations of fact. Any areas, measurements or distances are approximate. The text, photographs and plans are for guidance only and are not necessarily comprehensive. 3: It should not be assumed that the property has all necessary planning, building regulation or other consents and any services, equipment or facilities have not been tested. 4: Lease details, service charges, ground rent (where applicable) and council tax are given as a guide only and should be checked and confirmed by your Solicitor prior to exchange of contracts. 5: They assume no responsibility and any intending purchasers or tenants must satisfy themselves by inspection or otherwise as to the correctness of each of the statements contained within these particulars. If you require clarification of any points please contact us.